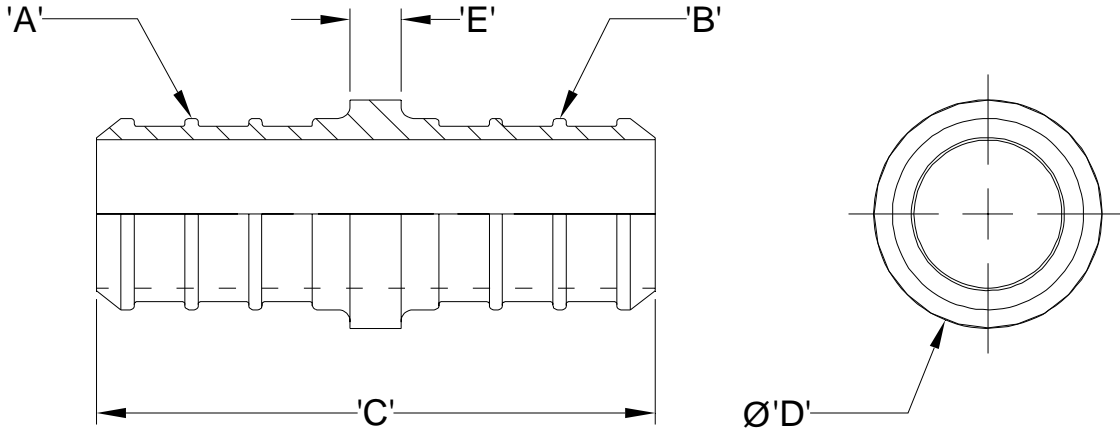




Zurn PEX® XL-Low Lead Brass Barb Coupling - QQC_GX Specification Sheet

Tag _____

Dimensional Data: Inches and [mm] are subject to manufacturing tolerances and change without notice.



NOTE: Barb geometry will vary depending upon barb size.

| Part Number | Description | 'A' | 'B' | 'C' | 'D' | 'E' |
|-------------|------------------------------------|-------------|-------------|--------------|--------------|-------------|
| QQC22GX | 3/8" Barb x 3/8" Barb Coupling | 3/8" Barb | 3/8" Barb | 1.38" [35.0] | 0.44" [11.1] | .013" [3.2] |
| QQC32GX | 1/2" Barb x 3/8" Barb Coupling | 1/2" Barb | 3/8" Barb | 1.38" [35.0] | 0.56" [14.3] | .013" [3.2] |
| QQC33GX | 1/2" Barb x 1/2" Barb Coupling | 1/2" Barb | 1/2" Barb | 1.38" [35.0] | 0.56" [14.3] | .013" [3.2] |
| QQC43GX | 3/4" Barb x 1/2" Barb Coupling | 3/4" Barb | 1/2" Barb | 1.38" [35.0] | 0.81" [20.6] | .013" [3.2] |
| QQC44GX | 3/4" Barb x 3/4" Barb Coupling | 3/4" Barb | 3/4" Barb | 1.38" [35.0] | 0.81" [20.6] | .013" [3.2] |
| QQC54GX | 1" Barb x 3/4" Barb Coupling | 1" Barb | 3/4" Barb | 1.55" [39.2] | 1.00" [25.4] | .013" [3.2] |
| QQC55GX | 1" Barb x 1" Barb Coupling | 1" Barb | 1" Barb | 1.72" [43.6] | 1.00" [25.4] | .013" [3.2] |
| QQC65GX | 1-1/4" Barb x 1" Barb Coupling | 1-1/4" Barb | 1" Barb | 2.20" [51.6] | 1.12" [28.4] | 0.25" [6.4] |
| QQC66GX | 1-1/4" Barb x 1-1/4" Barb Coupling | 1-1/4" Barb | 1-1/4" Barb | 2.55" [64.8] | 1.12" [28.4] | 0.25" [6.4] |
| QQC76GX | 1-1/2" Barb x 1-1/4" Barb Coupling | 1-1/2" Barb | 1-1/4" Barb | 2.55" [64.8] | 1.30" [33.0] | 0.25" [6.4] |
| QQC77GX | 1-1/2" Barb x 1-1/2" Barb Coupling | 1-1/2" Barb | 1-1/2" Barb | 2.55" [64.8] | 1.30" [33.0] | 0.25" [6.4] |
| QQC87GX | 2" Barb x 1-1/2" Barb Coupling | 2" Barb | 1-1/2" Barb | 3.02" [76.7] | 1.68" [42.7] | 0.37" [9.4] |
| QQC88GX | 2" Barb x 2" Barb Coupling | 2" Barb | 2" Barb | 3.37" [85.6] | 1.68" [42.7] | 0.37" [9.4] |

Engineering Specification: Zurn PEX® XL-Low Lead Brass Barb Coupling. The QQC_GX is used to connect two separate pieces of PEX tubing. Manufactured from EcoBrass®, C69300. These fittings, as a system with Zurn PEX® tube, are pressure rated at 160 PSI at 73°F, 100 PSI at 180°F, and 80 PSI at 200°F. These fittings are listed by NSF as complying with the following standards: NSF/ANSI Standard 14, NSF/ANSI Standard 61 including Annex G, ASTM F877, CSA B137.5, and ASTM F1807.

Accessories

| | |
|-------------|---------------------------------|
| ___ QCLP2X | 3/8" QuickClamp® Crimp Ring |
| ___ QCLP3X | 1/2" QuickClamp® Crimp Ring |
| ___ QCLP4X | 3/4" QuickClamp® Crimp Ring |
| ___ QCLP5X | 1" QuickClamp® Crimp Ring |
| ___ QCR2X | 3/8" Copper Crimp Ring |
| ___ QCR3X | 1/2" Copper Crimp Ring |
| ___ QCR4X | 3/4" Copper Crimp Ring |
| ___ QCR5X | 1" Copper Crimp Ring |
| ___ QCR6X | 1-1/4" Copper Crimp Ring |
| ___ QCR7X | 1-1/2" Copper Crimp Ring |
| ___ QCR8X | 2" Copper Crimp Ring |
| ___ QSOET2X | 3/8" Stainless Steel Crimp Ring |
| ___ QSOET3X | 1/2" Stainless Steel Crimp Ring |
| ___ QSOET4X | 3/4" Stainless Steel Crimp Ring |
| ___ QSOET5X | 1" Stainless Steel Crimp Ring |

Rev. _____ Date: 2/22/10 C.N. No. 110727
Dwg. No. 84481 Prod. No. QQC_GX