

## Stainless Steel Cord Reels

Stainless cord reels are better suited in applications where corrosion or sanitation are a concern. The heavy gauge 304L stainless provides an excellent finish and superior corrosion resistance. Models listed are for indoor, non-weathertight applications such as, food/chemical processing, pharmaceutical and water treatment facilities.

### Benefits

- **Suitable for Clean Environments** - Stainless steel is easy to sanitize/clean.
- **Quiet** - These reels utilize a cam latching system, making them much quieter and smoother than other reels in their class.
- **Compact** - A space saving design makes them ideal for minimum space requirements.
- **Superior Strength** - A robotically welded base, engineered structural supports and high-grade industrial stainless steel combine to give this reel superior strength and stability.



### Features

- 304L grade stainless steel
- Quiet speed latching mechanism
- Adjustable guide roller - multi-position
- 4 foot line cord
- 45 ft. of #12/3 SJEO cable

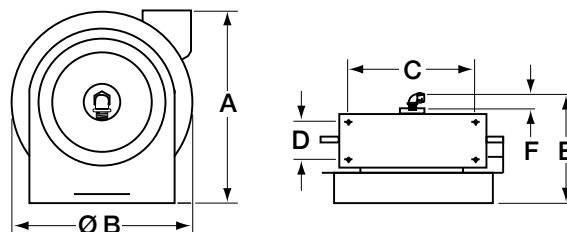
## Stainless Steel Cord Reels

Description	Cable Feet (m)	Cable Type	Amps	Volts	Weight Lbs. (kg)	Catalog Number
Stainless Steel Reel without cord ends.	45 (13.7)	#12/3 SJEO	20	125	30 (14)	<b>HBLSS45123</b>

*Note: For indoor non-weathertight applications only.*

### Dimensions Inches (mm)

	A	B	C	D	E	F
Inches	14.50"	13.50"	9.75"	2.50"	10.50"	2.125"
(mm)	(368)	(343)	(248)	(64)	(267)	(54)



### Related Products (See Back Page)

Hubbell offers a comprehensive line of hose, cord and cable reels for almost every application. For more information visit us online at [www.hubbell.com](http://www.hubbell.com)

## Industrial Power Cord Reels

- Durable, corrosion resistant steel construction design with yellow or white powder coat finish
- Multi-position guide arm
- Positive-latch mechanism automatically maintains desired cord length
- 12 AWG cord for greater current carrying capacity
- Plug-in 5 ft. long power cord requires no electrical wiring



**HBL45123TL20**

## Industrial Power Cord Reels

Cord End	Cable Feet (m)	Cable Type	NEMA Style	Amps	Volts AC	Weight Lbs. (kg)	Catalog Number
Without cord ends.	50 (15.2)	#16/3 SJ	—	10	125	20 (9.1)	<b>HBL50163</b>
Without cord ends.	45 (13.7)	#12/3 SJ	—	20	125	21 (9.5)	<b>HBL45123</b>
HBL5269C connector.	45 (13.7)	#12/3 SJ	5-15R	15	125	28 (12.7)	<b>HBL45123C</b>
HBL5369C connector.	45 (13.7)	#12/3 SJ	5-20R	20	125	28 (12.7)	<b>HBL45123C20</b> <b>HBL45123C20W</b>
Same as above with white reel housing.							
HBL2313 connector.	45 (13.7)	#12/3 SJ	L5-20R	20	125	28 (12.7)	<b>HBL45123TL20</b> <b>HBL45123TL20W</b>
Same as above with white reel housing.							
Portable outlet box with (1) gray duplex receptacle.	45 (13.7)	#12/3 SJ	5-15R	15	125	29 (13.2)	<b>HBL45123R</b> <b>HBL45123R20</b> <b>HBL45123R20W</b>
Same as above except white.	45 (13.7)	#12/3 SJ	5-20R	20	125	29 (13.2)	
Black portable outlet box with (1) gray duplex receptacle, white reel housing.	45 (13.7)	#12/3 SJ	5-20R	20	125	29 (13.2)	<b>HBL45123R20WM1</b>
Portable outlet box with (2) gray duplex receptacles.	45 (13.7)	#12/3 SJ	5-20R	20	125	29 (13.2)	<b>HBL45123R220</b> <b>HBL45123R220W</b>
Same as above except white.							
Black portable outlet box with (2) gray duplex receptacles, white reel housing.	45 (13.7)	#12/3 SJ	5-20R	20	125	29 (13.2)	<b>HBL45123R220WM1</b>
Portable outlet box with (1) ground fault protected gray duplex receptacle.	45 (13.7)	#12/3 SJ	5-15R	15	125	29 (13.2)	<b>HBL45123GF15</b> <b>HBL45123GF20</b> <b>HBL45123GF20W</b>
Same as above, with white reel housing.	45 (13.7)	#12/3 SJ	5-20R	20	125	29 (13.2)	
Black portable outlet box with (2) ground fault protected gray duplex receptacles, white reel housing.	45 (13.7)	#12/3 SJ	5-20R	20	125	25 (11.3)	<b>HBL45123GF220WM1</b>

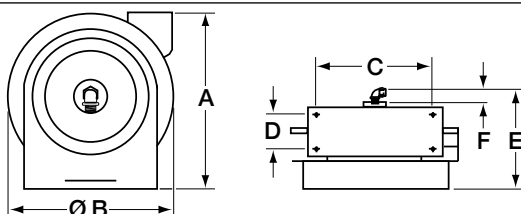
Note: 15 Amp: Supplied with 5 ft. power supply cord with HBL5266C, 15A straight blade plug. 20 Amp: Supplied with 5 ft. power supply cord with HBL5366C, 20A straight blade plug. Ground fault protected reels supplied with (1) GFM20 and (1) HBLP26FS.

## Accessories

Description	Weight Lbs. (kg)	Catalog Number
Pivot base 340° rotation fits all industrial models.	5 (2.3)	<b>HBL340PB</b>
Replacement stop.	.2 (.09)	<b>HBL12BS</b>

## Dimensions

Inch (mm)	A	B	C	D	E	F
	13.00" (330)	12.38" (314)	8.00" (203)	2.50" (64)	9.75" (248)	1.25" (32)



Note: All models have four .625" (15.9) diameter mounting holes.

## Listing/Certification

UL 355  
CSA C22.2 No. 21.

## Environment

Dry, indoor, non-hazardous locations.

## Mounting Positions

Wall mount.  
Ceiling mount.  
Bench mount.



**HBL45123C**



**HBL45123TL20**



**HBL45123R**



**HBL45123R20WM1**



**HBL45123GF15**



**HBL45123GF220WM1**



**HBL340PB**