



PL-L

17PL-L/COR/22-830/MF22/G/4P 10/1

Philips InstantFit LED lamps make the transition to LED from CFL lamps as simple as replacing a lamp. With a wide array of color temperatures, the InstantFit LED lamps can quickly and effectively replace compact fluorescent lamps.

Product data

General information		Starting Time (Nom)		0.5 s
Cap-Base	2G11 [2G11]	Warm Up Time to 60% Light (Nom)	0.5 s	
EU RoHS compliant	Yes	UL Type	Type B - bypass the ballast	
Nominal Lifetime (Nom)	50000 h	Power Factor (Nom)	0.9	
Switching Cycle	50000	Voltage (Nom)	120-277 V	
Tier	CorePro	Temperature		
Light technical		T-Ambient (Max)	45 °C	
Color Code	830 [CCT of 3000K]	T-Ambient (Min)	-20 °C	
Beam Angle (Nom)	160 °	T-Storage (Max)	65 °C	
Luminous Flux (Nom)	2100 lm	T-Storage (Min)	-40 °C	
Color Designation	White (WH)	T-Case Maximum (Nom)	65 °C	
Correlated Color Temperature (Nom)	3000 K	Controls and dimming		
Luminous Efficacy (rated) (Nom)	123.00 lm/W	Dimmable	Yes	
Color Consistency	<6	Mechanical and housing		
Color Rendering Index (Nom)	82	Bulb Finish	Frosted	
LLMF At End Of Nominal Lifetime (Nom)	70 %	Bulb Material	Glass	
Operating and electrical		Bulb Shape	Tube, single-ended	
Input Frequency	50 to 60 Hz	Approval and application		
Power (Nom)	17 W	Energy Saving Product	Yes	
Lamp Current (Max)	154 mA			
Lamp Current (Min)	68 mA			
Wattage Equivalent	40 W			

PL-L

Approval Marks	RoHS compliance UL certificate DLC compliance
Product data	
Order product name	17PL-L/COR/22-830/MF22/G/4P 10/1
EAN/UPC - Product	046677575106
Order code	929003097504

Numerator - Quantity Per Pack	1
Numerator - Packs per outer box	10
Material Nr. (12NC)	929003097504
Net Weight (Piece)	0.177 kg
Model Number	9290030975

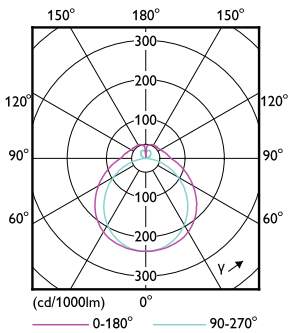
Dimensional drawing



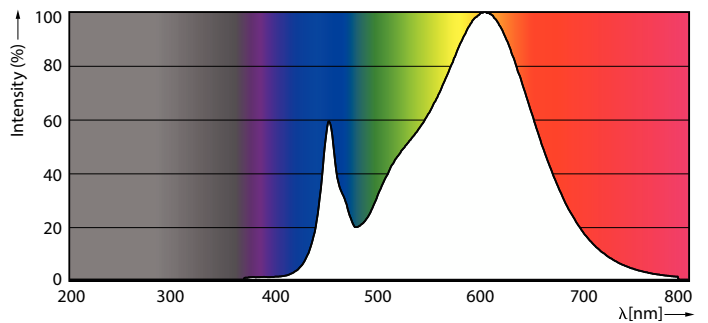
17PL-L/COR/22-830/MF22/G/4P 10/1

Product	D1	D2	A1	A2	A3
17PL-L/COR/22-830/MF22/G/4P 10/1	567 mm		560 mm		567 mm

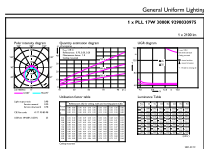
Photometric data



LEDtube COR PLL 17W 2G11 2100lm-LDD

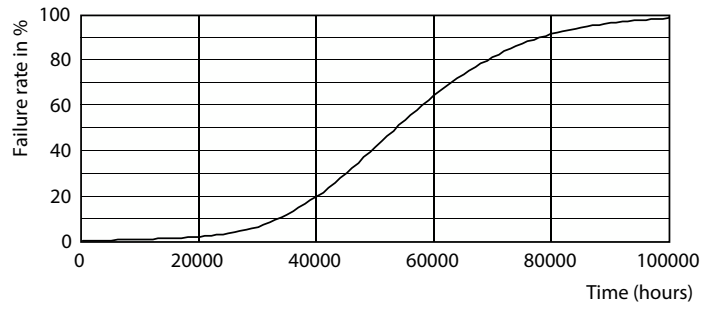
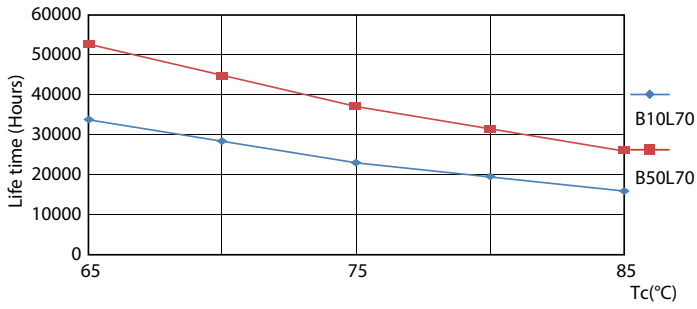


LEDtube COR PLL 17W 2G11 2100lm 830-POC



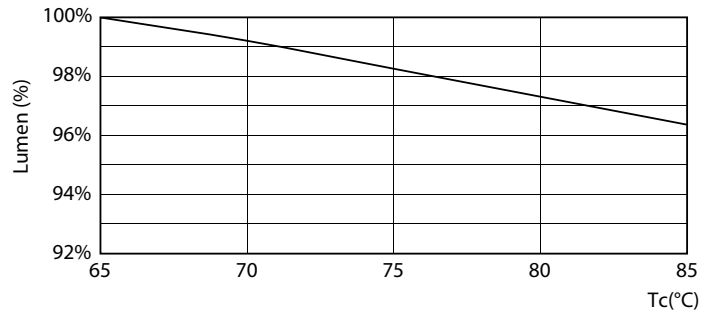
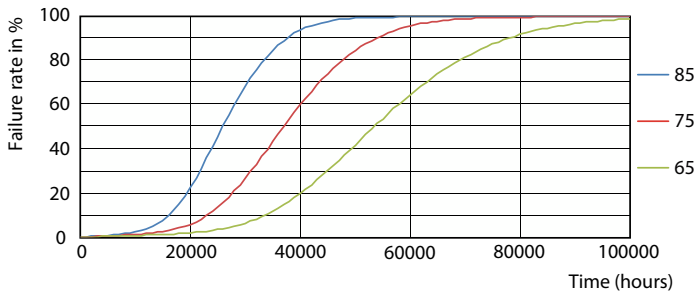
LEDtube COR PLL 17W 2G11 2100lm 830-GUL

Lifetime



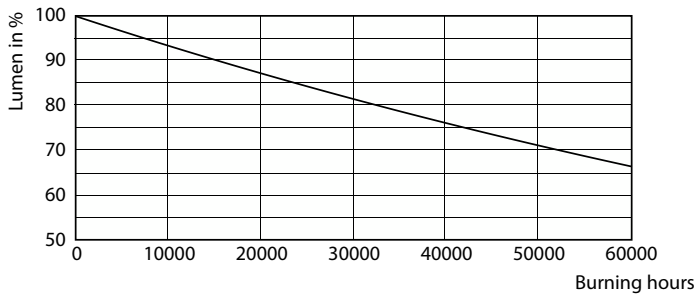
LEDtube COR PLL 17W 50K LifetimeVsTc-LED

Life Expectancy Diagram



LEDtube COR PLL 17W 50K FailureRate-LED

LEDtube COR PLL 17W 50K LumenVsTc-LMP



Lumen Maintenance Diagram

