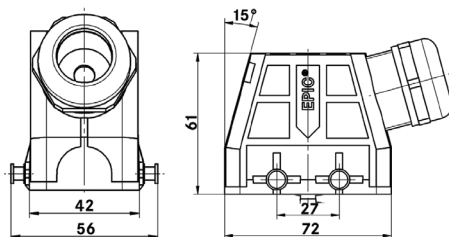
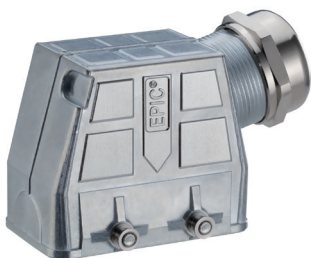


EPIC® ULTRA HB 10 hood

Hood with double lever bolts




all dimensions are in mm

Technical data

IP Protection class: UL 50E Type 4, 4X, 12 IP65

Complete the installation

 ULTRA HB covers page 429

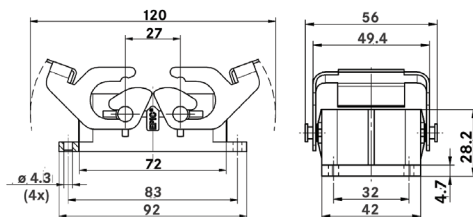
Approvals



| Part number | Brush included | Cable OD mm | Min. OD for braided shield mm |
|-------------------|----------------|-------------|-------------------------------|
| Side entry | | | |
| 70250210 | no | 6 - 13 | — |
| 70250211 | no | 9 - 17 | — |
| 70250212 | yes | 9 - 17 | 6 |

EPIC® ULTRA HB 10 panel mount base

Panel mount base with double levers




all dimensions are in mm

Technical data

IP Protection class: UL 50E Type 4, 4X, 12 IP65

Complete the installation

 ULTRA HB covers page 429

Approvals



| Dust cover included | Part number |
|---------------------|-------------|
| no | 70250213 |

If not otherwise specified, all values relating to the product are nominal values. Photographs are not to scale and are not true representations of the products in question.