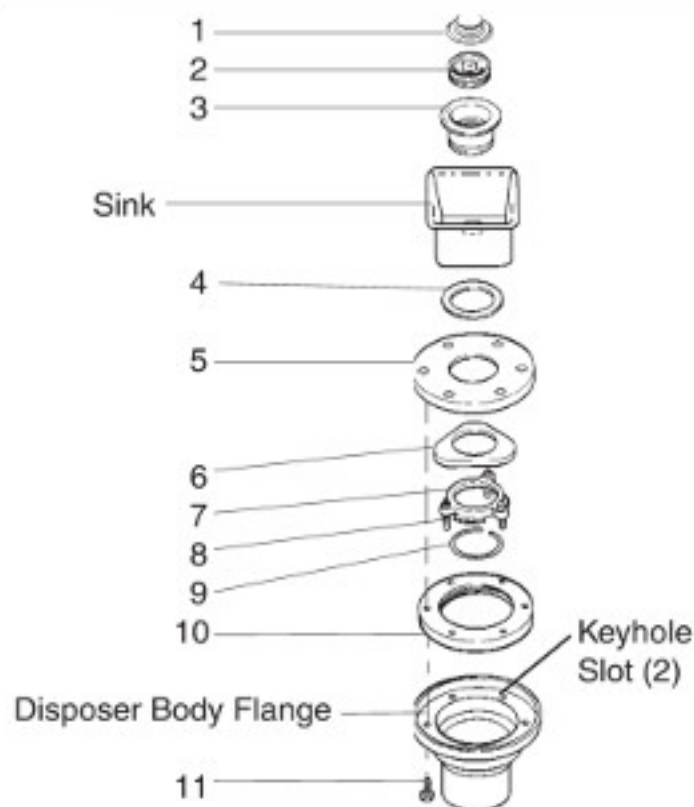


# # 5 SHORT SINK FLANGE ASSEMBLY (# 12506-C)



## PART NUMBERS

I.D. No.	Part No.	Qty	Description
1	1876	1	Stopper
2	70966	1	Splash Baffle
3	5170-AC	1	Strainer Flange
4	1160	1	Strainer Flange Gasket
5	11189-T	1	Adaptor Mounting Flange
6	5150-E	1	Backup Flange
7	5141	1	Mounting Flange
8	5147	3	Backup Screw
9	5166	1	Retaining Ring
10	11016	1	Adaptor Mounting Gasket
11	1491	6	Screw

## INSTALLATION (Suggested Assembly Method)

1. Unscrew the three backup screws (8) until they are flush with the upper mounting ring (7) surface. Pry the retaining ring (9) free from the strainer flange (3) with a screwdriver and separate all mounting assembly parts (3, 4, 6 - 9).
2. Form a 3/4 inch thick ring of top grade oil base putty around the sink opening (use non-hardening putty). Insert the sink flange (3) into the sink opening and press firmly in place. Clean away any excess putty.
3. From underneath the sink, place the strainer fiber gasket (4), adaptor mounting flange (5), backup ring (6), and upper mounting ring (7) over the sink flange (3) and hold them up to the sink. Fit the retaining ring (9) into the groove on the sink flange (3) to hold the mounting parts in place.
4. Tighten the three backup screws (8) evenly until the backup ring (6) draw snugly against the underside of the adaptor mounting flange (5).
5. Position the disposer for plumbing hookup and check the location of the keyhole slots in the disposer body flange.
6. Attach two screws through opposite holes in adaptor mounting gasket (10) and into the threaded fasteners of the mounting flange (5). The screws should be protruding approximately 1/4 inch below the adaptor mounting gasket (10).
7. Position the disposer beneath the adaptor mounting gasket (10) and engage the two protruding screws in the key hole slots in the disposer body flange. Assemble the remaining screws (11). Tighten all screws evenly.

**NOTE:** This Short #5 Mounting Assembly allows an additional 2 1/4" clearance between the bottom of the disposer and the floor.