



T8

9.5T8/MAS/48-840/IF16/P/DIM 10/1

Our TLEDs are available in InstantFit (Type A / Type C) or MainsFit (Ballast bypass / Type B) versions. The InstantFit lamps work on a broad variety of ballasts and LED drivers. Only InstantFit has over 15,000 lamp & ballast combinations delivering even light output, energy savings and a long lifetime. Our MainsFit products feature a double-ended design, simplifying installation while a proprietary safety circuit minimizes a shock risk. Lamp sizes range from 2-foot to 8-foot and U-bend with a variety of lumen outputs.

Product data

General Information		Starting Time (Nom)	
Base	G13 [Medium Bi-Pin Fluorescent]		0.5 s
EU RoHS compliant	Yes	Warm Up Time to 60% Light (Nom)	0.5 s
Nominal Lifetime (Nom)	70000 h	UL Type	Type A - works on ballast Type C - works with dedicated LED driver Type A+C - works with both ballasts and the LED driver
Switching Cycle	50000X	Power Factor (Nom)	0.9
		Voltage (Nom)	120-277, 347 V
Light Technical		Temperature	
Color Code	841 [CCT of 4100K (841)]	T-Ambient (Max)	55 °C
Beam Angle (Nom)	180 °	T-Ambient (Min)	-20 °C
Initial lumen (Nom)	1600 lm	T-Storage (Max)	65 °C
Color Designation	Cool White (CW)	T-Storage (Min)	-40 °C
Correlated Color Temperature (Nom)	4000 K	T-Case Maximum (Nom)	55 °C
Luminous Efficacy (rated) (Nom)	168.00 lm/W		
Color Consistency	<6	Controls and Dimming	
Color Rendering Index (Nom)	80	Dimmable	Yes
LLMF At End Of Nominal Lifetime (Nom)	70 %		
Operating and Electrical			
Input Frequency	50 to 60 Hz		
Power (Rated) (Nom)	9.5 W		

T8

Mechanical and Housing

Product Length	48 in
----------------	-------

Approval and Application

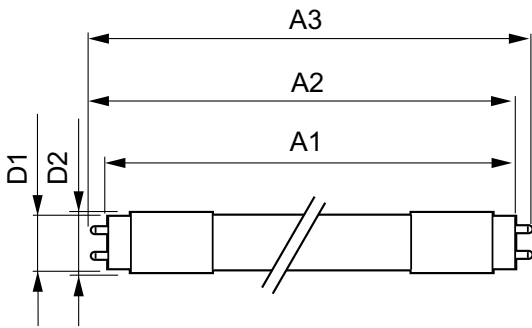
Energy Efficiency Label (EEL)	Not applicable
Energy Saving Product	Yes
Approbation Marks	RoHS compliance UL certificate DLC compliance
Energy Consumption kWh/1000 h	- kWh

Product Data

Order product name	9.5T8/MAS/48-840/IF16/P/DIM 10/1
--------------------	----------------------------------

EAN/UPC - Product	046677473990
Order code	473990
Numerator - Quantity Per Pack	1
Numerator - Packs per outer box	10
Material Nr. (12NC)	929002016004
Net Weight (Piece)	0.220 kg
Model Number	9290020160

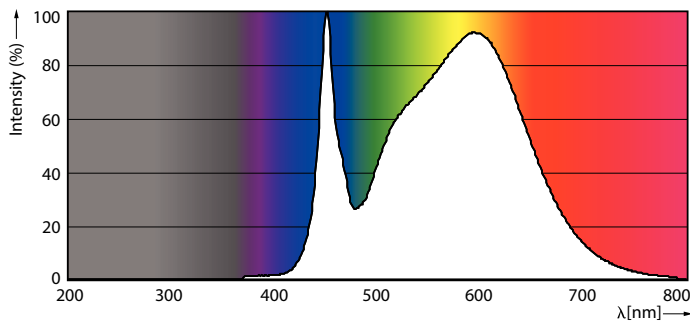
Dimensional drawing



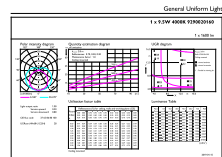
TLED 1200mmT8 120-277 9.5W 1600lm 4000K

Product	D1	D2	A1	A2	A3
9.5T8/MAS/48-840/ IF16/P/DIM 10/1	25.7 mm	28 mm	1198.1 mm	1205.2 mm	1212.3 mm

Photometric data

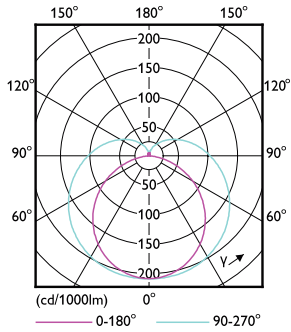


LEDtube 1200mm T8 9,5W 1600lm 4000K



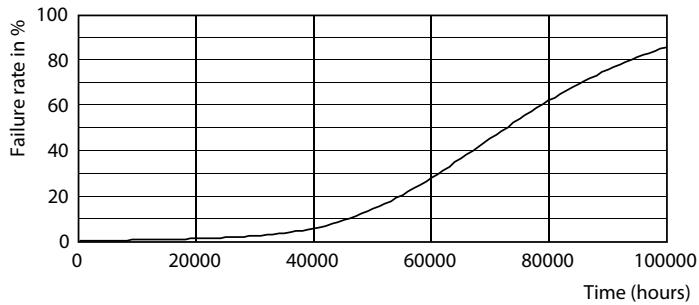
LEDtube 1200mm T8 9,5W 1600lm 4000K

Photometric data

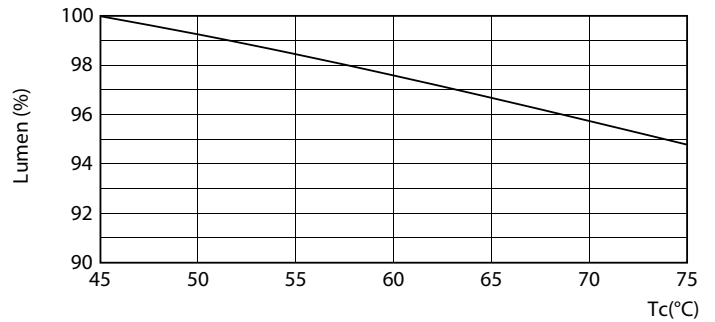


LEDtube 1200mm T8 9,5W

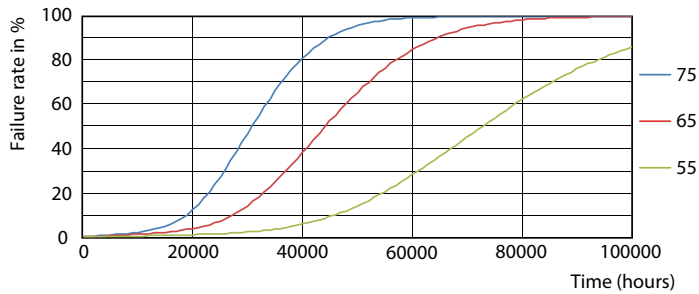
Lifetime



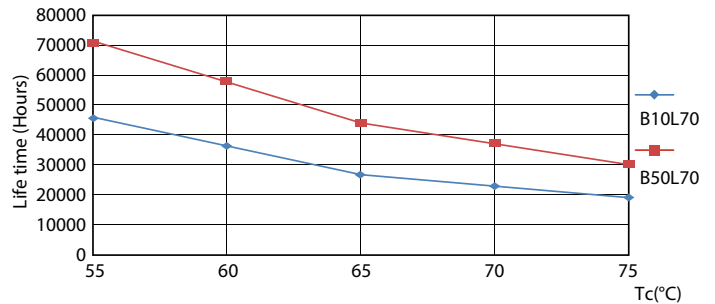
LEDtube 1200mm T8 9,5W



LEDtube 1200mm T8 9,5W LumenVsTc



LEDtube 1200mm T8 9,5W FailureRate



LEDtube 1200mm T8 9,5W LifetimeVsTc

T8

Lifetime



LEDtube 1200mm T8 9,5W

