

T8

10T8/COR/48-840/IF16/G/DIM 10/1

Our TLEDs are available in InstantFit (Type A / Type C) or MainsFit (Ballast bypass / Type B) versions. The InstantFit lamps work on a broad variety of ballasts and LED drivers. Only InstantFit has over 15,000 lamp & ballast combinations delivering even light output, energy savings and a long lifetime. Our MainsFit products feature a double-ended design, simplifying installation while a proprietary safety circuit minimizes a shock risk. Lamp sizes range from 2-foot to 8-foot and U-bend with a variety of lumen outputs.

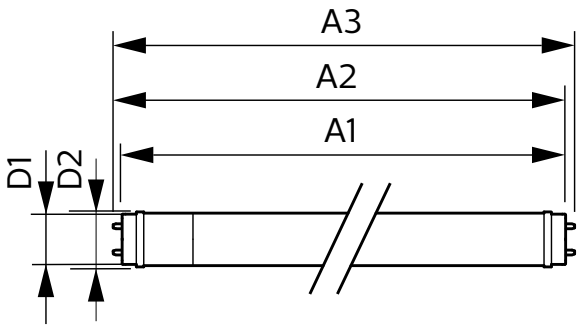
Product data

General Information		Lamp Current (Max)	
Base	G13 [Medium Bi-Pin Fluorescent]	Lamp Current (Min)	260 mA
EU RoHS compliant	Yes	Starting Time (Nom)	100 mA
Nominal Lifetime (Nom)	50000 h	Warm Up Time to 60% Light (Nom)	0.5 s
Switching Cycle	50000X	UL Type	Type A - works on ballast Type C - works with dedicated LED driver Type A+C - works with both ballasts and the LED driver
Light Technical		Power Factor (Nom)	0.9
Color Code	841 [CCT of 4100K (841)]	Voltage (Nom)	120-277, 347 V
Beam Angle (Nom)	240 °	Temperature	
Initial lumen (Nom)	1600 lm	T-Ambient (Max)	45 °C
Color Designation	Cool White (CW)	T-Ambient (Min)	-20 °C
Correlated Color Temperature (Nom)	4000 K	T-Storage (Max)	65 °C
Luminous Efficacy (rated) (Nom)	160.00 lm/W	T-Storage (Min)	-40 °C
Color Consistency	<6	T-Case Maximum (Nom)	50 °C
Color Rendering Index (Nom)	82	Controls and Dimming	
LLMF At End Of Nominal Lifetime (Nom)	70 %	Dimmable	Yes
Operating and Electrical			
Input Frequency	25000-105000 Hz		
Power (Rated) (Nom)	10 W		

Mechanical and Housing	
Product Length	48 in
Approval and Application	
Energy Efficiency Label (EEL)	Not applicable
Energy Saving Product	Yes
Approbation Marks	RoHS compliance UL certificate DLC compliance
Energy Consumption kWh/1000 h	- kWh
Product Data	
Order product name	10T8/COR/48-840/IF16/G/DIM 10/1

EAN/UPC - Product	046677553234
Order code	553230
Numerator - Quantity Per Pack	1
Numerator - Packs per outer box	10
Material Nr. (12NC)	929001991734
Net Weight (Piece)	0.230 kg
Model Number	9290019917

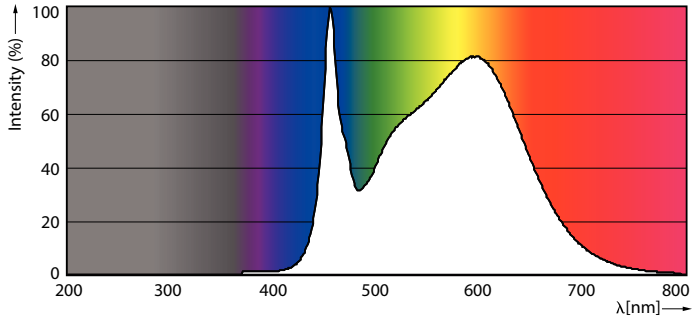
Dimensional drawing



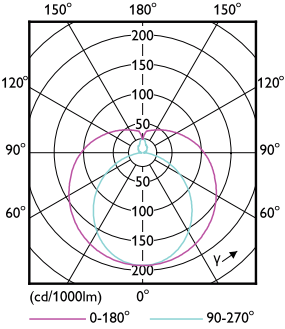
TLED 1200mmT8 120-277 10.5W 1650lm 4000K

Product	D1	D2	A1	A2	A3
10T8/COR/48-840/ IF16/G/DIM 10/1	25.7 mm	28 mm	1198.1 mm	1205.2 mm	1212.3 mm

Photometric data

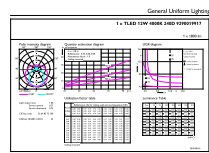


LEDtube 10W G13 840 ND



LEDtube 10W G13 840 ND

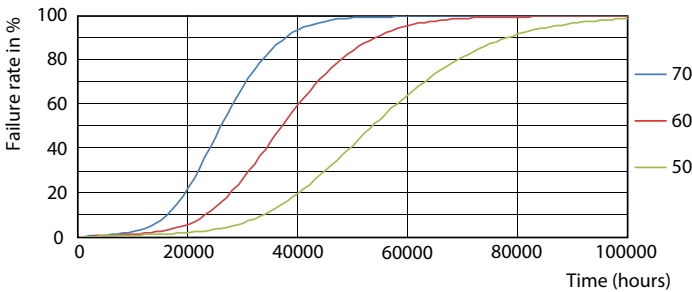
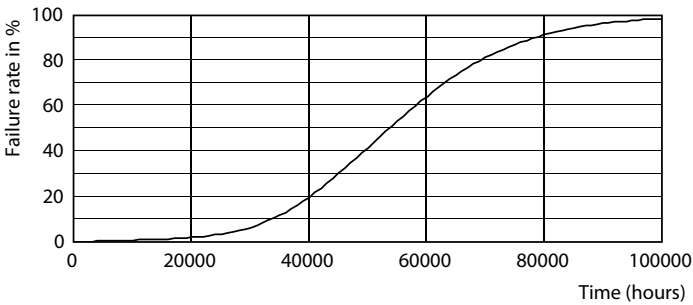
Photometric data



Technical Parameters 43
Photometric Data
Page 117

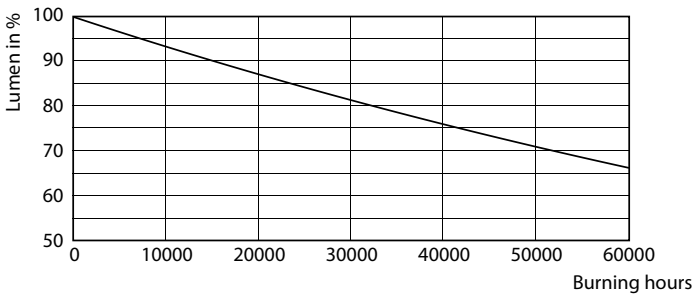
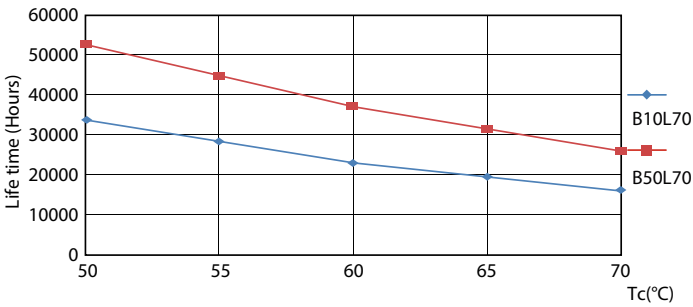
LEDtube 10W G13 840 ND

Lifetime



LEDtube 10W G13 850 ND

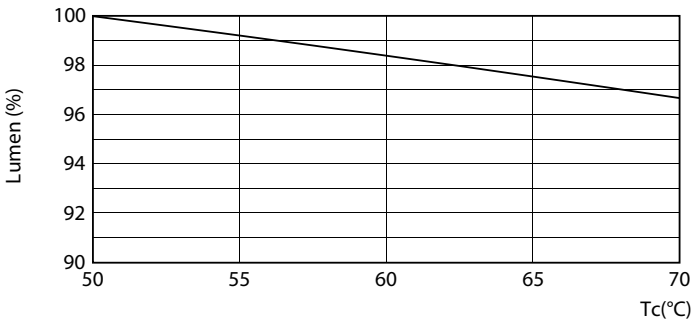
LEDtube 10W G13 850 ND



LEDtube 10W G13 850 ND

LEDtube 10W G13 850 ND

Lifetime



LEDtube 10W G13 850 ND

