

SPECIFICATIONS

Certifications/Qualifications

| | |
|---------------|---|
| ADA Compliant | Yes www.kichler.com/warranty |
|---------------|---|

Dimensions

| | |
|---|-------------|
| Base Backplate | 6.25 X 4.50 |
| Extension | 3.50" |
| Weight | 5.20 LBS |
| Height from center of Wall opening (Spec Sheet) | 16.00" |
| Height | 4.50" |
| Length | 32.00" |
| Width | 32.00" |

Light Source

| | |
|----------------------------|------------|
| Delivered Lumens | 2200 |
| Dimmable | Yes |
| Expected Life Span (Hours) | 40000 |
| Lamp Included | Integrated |
| Light Source | LED |
| Max or Nominal Watt | 104.70 |
| # of Bulbs/LED Modules | 3 |

Mounting/Installation

| | |
|------------------------------|------------|
| Lead Wire Length | 6" |
| Location Rating | Damp |
| Mounting Style | Wall Mount |
| Mounting Weight | 5.20 LBS |
| Mount Vertical Or Horizontal | Yes |

Photometrics

| | |
|-----------------------|-------|
| Color Rendering Index | 90 |
| Kelvin Temperature | 3000K |

FIXTURE ATTRIBUTES




Housing

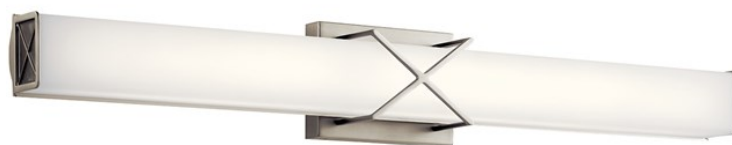
| | |
|----------------------|---------------------|
| Diffuser Description | Clear Satin Etched |
| Primary Material | STEEL |
| Shade Dimensions | 32.00 X 2.75 X 2.00 |

Product/Ordering Information

| | |
|--------|----------------|
| SKU | 45658NILED |
| Finish | Brushed Nickel |
| Style | Contemporary |
| UPC | 7.83928E+11 |

Finish Options

-  Brushed Nickel
-  Chrome
-  Matte Black



ALSO IN THIS FAMILY



45657MBKLED



45658MBKLED



45656MBKLED



45656NILED



45657NILED



45656CHLED