

SPECIFICATIONS

Certifications/Qualifications

www.kichler.com/warranty

Dimensions

Weight	0.03 LBS
Height	2.00"
Length	3.00"
Width	0.50"

Mounting/Installation

Location Rating	Accessory, Listing Not Required
-----------------	---------------------------------

FIXTURE ATTRIBUTES

Housing

Primary Material	Steel
------------------	-------

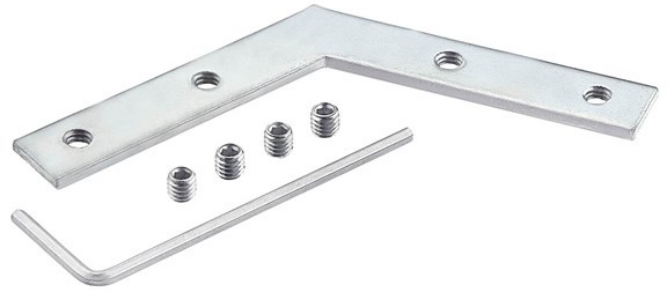
Product/Ordering Information

SKU	1TEA120HCONN
Finish	Unfinished
Style	Other
UPC	783927558105

Finish Options



Unfinished



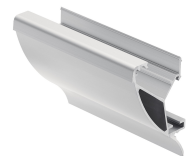
ALSO IN THIS FAMILY



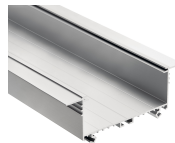
1TEL0068WHO



1TEE2S1SFSSIL



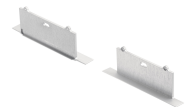
1TEC2M2SF8SIL



1TEC6EMRC8SIL



1TEE2DMRCSSIL



1TEE6EMRCSSIL