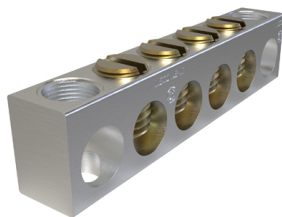


SKU: NBAS-004-2-B

UPC: 0783669005554

Features & Benefits:

Description: Aluminum Neutral Bar, Dual Rated, Conductor Range 4-14, 4 Ports, 2 Holes, #10 Bolt, Headless Slot Drive, UL, CSA



Specs

Additional Class Attributes

Connection	Mechanical
Mounting Hole Type	Thru
Number of Conductors	4
Number of Mounting Holes	2
Number of Poles	1
Number of Ports / Wireways	6
Number of Usable Ports	4
Type of Accessory	NBST-2/0

Dimensions

Dimension G (IN)	0.18
Dimension G (mm)	4.572
Drive Size Main	NA
Drive Type Main	Slotted
Height (IN)	0.437
Height BX (IN)	1.9
Height (mm)	11.0998
Length (IN)	1.92
Mounting Bolt/Stud Size (mm)	254
Mounting Hole Diameter (IN)	0.206
Mounting Hole Position (IN)	1 & 6
Mounting Hole Spacing (IN)	1.56
Mounting Hole Spacing (mm)	39.624
Weight (LB)	0.026
Weight BX (LB)	0.615
Width (IN)	0.312
Width BX (IN)	4

Material and Finish

Conductor Material	Copper
Connector Finish	Tin
Insulation	NA
Material	Aluminum
Wire Binding Hardware Finish	Gold Zinc Chromate
Wire Binding Hardware Material	Steel

Additional Technical Specifications

Conductor Type	Solid
----------------	-------

Bolt and Screw Sizes

Mounting Bolt/Stud Size	#10
Number of Wire Binding Screws per Port	1
Wire Binding Screw Size	1/4
Wire Binding Torque	4 - 6 AWG = 35

General

Bag Quantity	1
Carton Quantity Description	STD PACK QTY 20
Dual Rated	Yes
NEMA Code	S-588-3
UPC Code	78366900555

Testing Standards

CSA File Number	LR-29601
CSA Standard	C22.2 No. 65-03
Prop65 Compliance	This product is in compliance with Prop65. It is not known to contain any chemicals associated with this regulation
UL Control Number	NA
UL / CULUS Specification	UL 486A/B Recognized
UL File Number	E6207

Color

Color	Silver
-------	--------

Conductor Ranges

Conductor Range AL Solid (Secondary, tap, load)	NA
Conductor Range AL Stranded (Primary, run, main, line)	4 Str - 14 Str
Conductor Range AL Stranded (Secondary, tap, load)	NA
Conductor Range CU Solid (Primary, run, main, line)	10 Sol - 14 Sol
Conductor Range CU Solid (Secondary, tap, load)	NA
Conductor Range CU Stranded (Primary, run, main, line)	4 Str - 14 Str
Conductor Range CU Stranded (Secondary, tap, load)	NA
Conductor Range AL Solid (Primary, run, main, line)	10 Sol - 14 Sol

Voltage

Voltage Rating	35 kV
----------------	-------