

# PIM

## PULSE INTERFACE MODULE

### INSTALLATION INSTRUCTIONS



#### **E-Mon**

1985 Douglas Drive North  
Golden Valley, MN 55422  
(800) 334-3666  
[www.emon.com](http://www.emon.com)  
[info@emon.com](mailto:info@emon.com)



Dear Valued Customer,

We are pleased that you chose to buy one of our products, and want you to be just as pleased with owning it. Before installing your new E-Mon product, please read the information on the following pages carefully.

We believe that you will find the E-Mon D-Mon meters easy to install and to use for monitoring and evaluating your electrical usage.

To be sure that you are 100% satisfied with your products, we provide toll-free technical and sales support Monday through Friday, 8:00 am to 7:30 pm, EST: (800) 334-3666. You may also reach us via email at [info@emon.com](mailto:info@emon.com).

If you have questions, we can handle them quickly and effectively with a telephone call. Please let us try to help you **BEFORE** you remove your meter. And to help us help you, we ask that you have all relevant information on hand when you call (model or part numbers, nature of difficulty, etc.)

Be sure to forward this manual to the owner after installation is complete, so that they may use it as a reference guide when reading the E-Mon D-Mon meter.

Thank you.

# TABLE OF CONTENTS

Section 1.0	Introduction	4
Section 2.0	Installation Instructions	5
Section 3.0	Pulse Values	6
Section 4.0	Technical Specifications	7

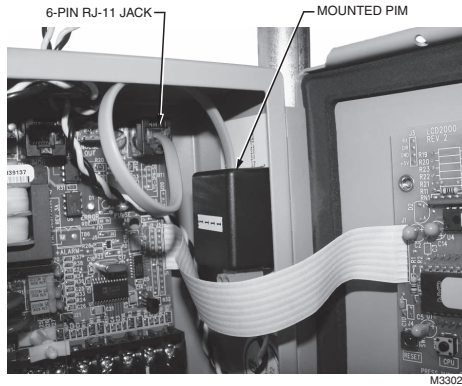
# 1.0 INTRODUCTION

The E-Mon Pulse Interface Module (PIM) is designed to interface E-Mon Class 1000 and 2000 KWH and Demand meters with Web-Mon's I/O-8 expansion module. It will provide the correct pulse signal to the I/O-8 that will allow for proper functionality with the meters.

The PIM is powered by the meter and does not require any other source to operate. The value of the pulse is determined by the amperage size of the meter that it is connected to. Connection to the meter is through a 6-pin modular jack and is simply a plug-in type of hookup.

The output pulse from the PIM is through a removable 2-screw connector and is polarity independent. The output pulse is optically isolated from the meter and is treated as a dry contact.

**NOTE: The PIM will interface with all Class 1000 and 2000 series meters built after 1997. It will not function with meters built before 1998.**



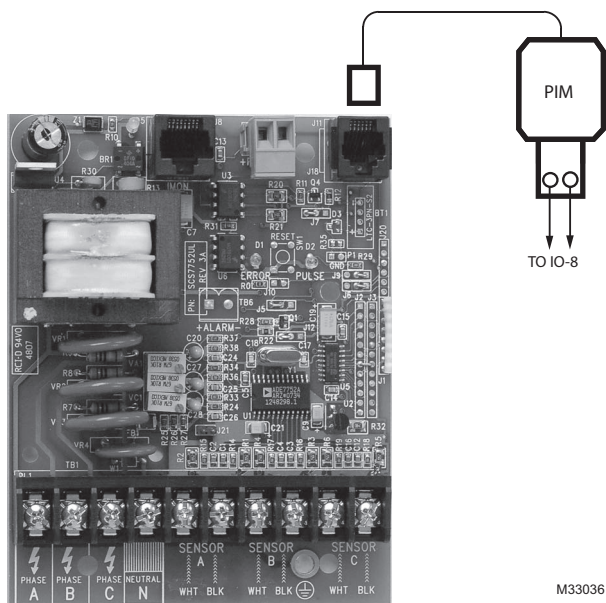
**Fig. 1. Installation Overview**

## 2.0 INSTALLATION INSTRUCTIONS

The E-Mon D-Mon® PIM plugs into the 6-PIN (RJ-11) modular jack located on the main board of the E-Mon Class 1000 and 2000 series of meters. It is important that the unit is not connected to the 8-PIN jack (RJ-45), as it will not function when installed in this manner.

Mounting of the PIM inside the meter can be accomplished with two-sided tape or velcro, see Fig. 1. The PIM can be mounted outside of the meter if required. The output wiring is provided through a removable 2-screw terminal located on the body of the PIM.

The 2 wires from the selected input terminals of the Web- Mon I/O-8 module will connect to the terminals on the PIM. There is no polarity requirement, so the wiring can go to either terminal point.



M33036

**Fig. 2. PIM plugs into the 6-PIN (RJ-11) modular jack located on the main board**

### 3.0 PULSE VALUES

The value of the output pulse of the PIM is dependent upon the amperage size of the meter it is connected to. The chart below will provide the proper values. The values listed are in watt-hours

Meter Amps	25	50	100	200	400	800	1600	3200
Pulse Value	7.8125	15.625	31.25	62.5	125	250	500	1000

## 4.0 TECHNICAL SPECIFICATION

Size	L = 2", W = 1.25", H = 0.75" (including connector)
Input	Meter Supplied Power and Signal
Output	Solid-State Switch, N.O. Contact Equivalent
Maximum ON Resistance	2.5 ohms
Minimum OFF Impedance	100K ohms
Interface Voltage	1.5 to 36 Volts DC or AC
Environmental	-20 C to 70 C

By using this E-Mon literature, you agree that E-Mon will have no liability for any damages arising out of your use or modification to, the literature. You will defend and indemnify E-Mon, its affiliates and subsidiaries, from and against any liability, cost, or damages, including attorneys' fees, arising out of, or resulting from, any modification to the literature by you.

**E-Mon**

1985 Douglas Drive North

Golden Valley, MN 55422

[www.emon.com](http://www.emon.com)

[info@emon.com](mailto:info@emon.com)

© U.S. Registered Trademark  
© 2014 E-Mon  
62-0375—02 M.S. Rev. 11-14  
Printed in United States

