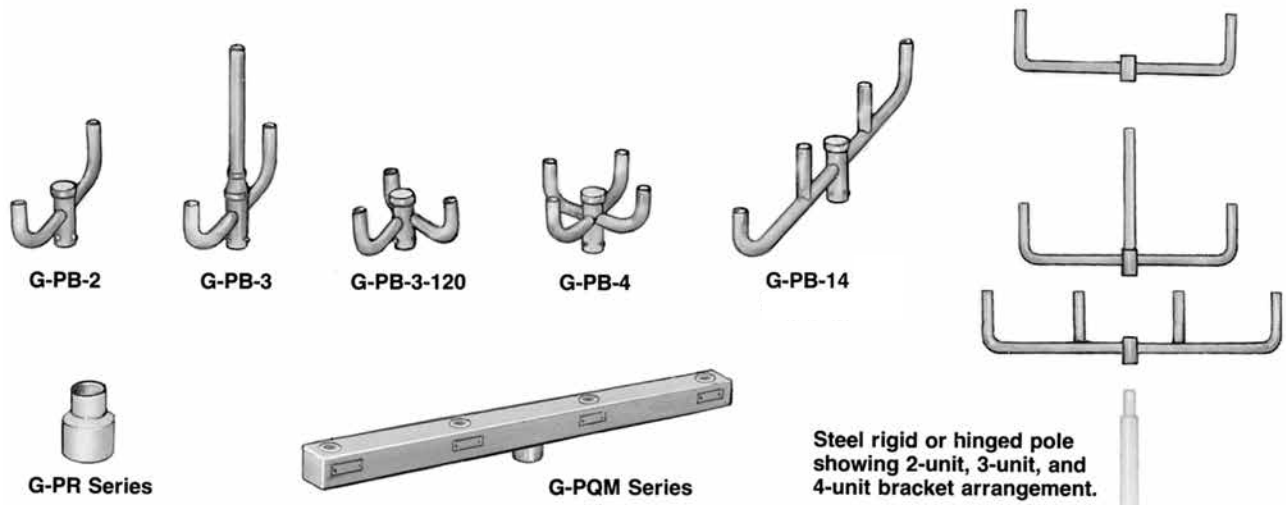


Floodlight Mounting Brackets

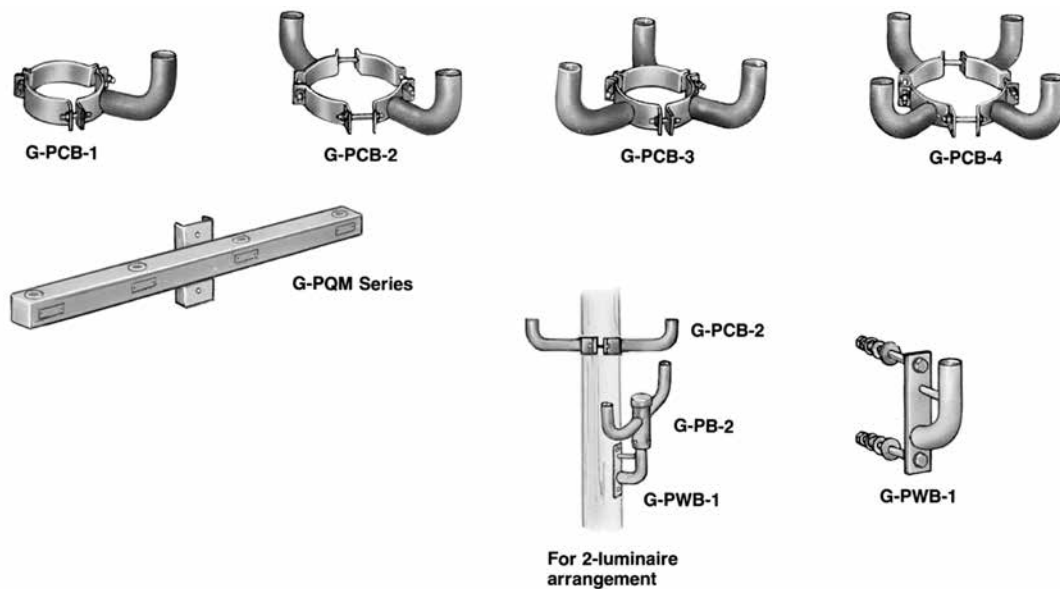
Single or Multiple Installation on Wall, Wood or Metal Poles

NEC/CEC:
Rated for Ordinary (Unclassified) Locations

Metal Pole Brackets



Wood Pole Brackets



Floodlight Mounting Brackets

Single or Multiple Installation on Wall, Wood or Metal Poles

NEC/CEC:
Rated for Ordinary (Unclassified) Locations

Poletop Brackets for Metal Poles — Dimensions may vary. Consult your local sales representative for specifications

Floodlight mounting brackets for installation of 2 to 4 floodlights atop metal poles are manufactured from high-strength steel tube, and slip-fit onto 50.8 mm (2 in) pipe size poletop tenons. Furnished with 3 locking setscrews and red oxide prime coat finish. Bracket tenon is 50.8 mm (2 in) pipe size (60.5 mm 2-3/8 in) O.D.).

Dimensions mm (in)	Description	Catalog Number
	Poletop Bracket for Two Luminaires	G-PB-2
	Poletop Bracket for Three Luminaires	G-PB-3
	Poletop Bracket for Three Luminaires (120° apart)	G-PB-3-120
	Poletop Bracket for Four Luminaires (in line)	G-PB-14
	Poletop Bracket for Four Luminaires	G-PB-4

Floodlight Mounting Brackets

Single or Multiple Installation on Wall, Wood or Metal Poles

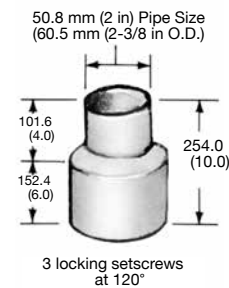
NEC/CEC:
Rated for Ordinary (Unclassified) Locations

Round Poletop Reducers

Made from high strength steel tubing, complete with 3 locking setscrews and finished to match pole (bronze, galvanized).

Dimensions in Millimeters (Inches) — May vary. Consult your local sales representative for specifications

Poletop Pipe Size Reduction mm (in)	Catalog Number
63.5 to 50.8 (2-1/2 to 2)	G-PR-2-1/2
76.2 to 50.8 (3 to 2)	G-PR-3
88.9 to 50.8 (3-1/2 to 2)	G-PR-3-1/2
101.6 to 50.8 (4 to 2)	G-PR-4
127 to 50.8 (5 to 2)	G-PR-5



Wall Mounting Brackets

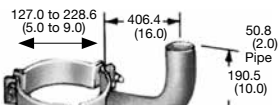
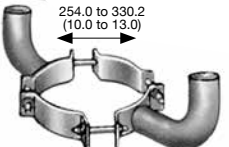
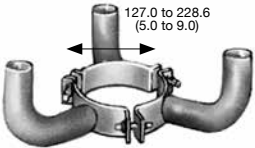
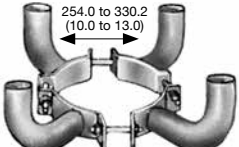
Dimensions mm (in)	Description	Catalog Number
	<p>For Floodlights with 50.8 mm (2 in) Slip-Fitter, or will mount G-PB Series brackets with floodlights.</p> <ul style="list-style-type: none"> Complete with two 330.2 mm (13 in) -long bolts, washers, and nuts. Bronze coat finish. 	G-PWB-1
	<p>Used with G-AM-8-SF and GSF-20 to provide a wall mounting option. Galvanized Steel.</p>	GPSWB6GAL

Floodlight Mounting Brackets

Single or Multiple Installation on Wall, Wood or Metal Poles

NEC/CEC:
Rated for Ordinary (Unclassified) Locations

Dimensions may vary. Consult your local sales representative for specifications

Dimensions mm (in)	Description	Catalog Number
 <p>G-PCB-1</p>	<p>Wood Pole Clamp Brackets</p> <ul style="list-style-type: none"> Pole clamping floodlight mounting brackets constructed of 50.8 mm (2 in) steel pipe. Furnished complete with clamping bolts and nuts. Has red oxide primer coat finish. For 1 and 3 floodlights—Fits 127.0 mm (5 in) to 228.6 mm (9 in) poles. For 2 and 4 floodlights—Fits 254.0 mm (10 in) to 330.2 mm (13 in) poles. 	
 <p>G-PCB-2</p>	1 Arm	G-PCB-1
 <p>G-PCB-3</p>	2 Arm	G-PCB-2
 <p>G-PCB-4</p>	3 Arm	G-PCB-3
	4 Arm	G-PCB-4

Lite Mount Bars for 4 Quartzlite or Areamaster Jr. Floodlights

Bars have 11 gauge steel body and 12 gauge steel cover. Two styles: to mount on 50.8 mm (2 in) pipe size poletop tenon, or on wood poles using thru-bolts. Welded construction, with 19.1 mm (3/4 in) N.P.S. tapped hubs.

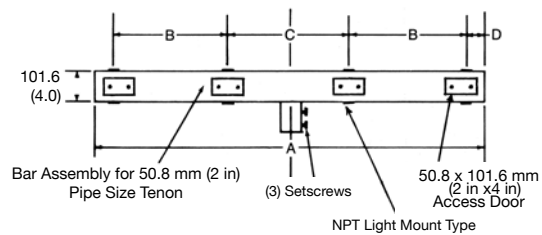
Number of Fixtures	Length A	Dim. B	Dim C	Dim. D
4	28	—	25	1-1/2

Dimensions For Mounting Quartzlites or Areamaster Jr.

Number of Fixtures For Mounting	Catalog Number	
	Metal Pole	Wood Pole
4 Fixtures	G-PQM-4T	G-PQM-4W

Dimensions in Millimeters (Inches) — May vary.
Consult your local sales representative for specifications

For Metal Poles



For Wood Poles

