

TECHNICAL DATA

PTi120 Pocket Thermal Imager



PREMIUM IMAGE QUALITY

SPATIAL RESOLUTION
7.6 mRad

RESOLUTION
120 x 90

TEMPERATURE RANGE
-20 °C to 150 °C

ENCLOSURE RATING
IP54

IR FUSION

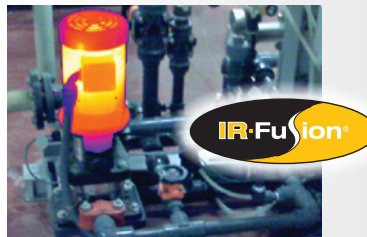
The power of a professional-grade thermal imager that fits in your pocket.

- Automatically organize and file thermal images with Fluke Connect® Asset Tagging
- Fully radiometric thermal imager gives you measurement data to the pixel with 120 x 90 infrared resolution (10,800 pixels)
- 3.5" LCD touchscreen display for easy troubleshooting
- Can withstand drop up to 1 meter
- IP54 enclosure rating
- -20 °C to 150 °C temperature measurement range

Rugged portable thermal camera for industrial inspection.



Small enough to carry every day without worry. Pocket sized. Stands up to dirt and water. Quick scans of electrical equipment, machinery and other assets.



The 3.5" LCD touchscreen offers IR-Fusion™ to blend a visible light image with an infrared image to more easily locate problems. Simply slide your finger across the screen to adjust the setting.



With Fluke Connect® Asset Tagging you eliminate the tedium of sorting and organizing your infrared images. By simply scanning your asset's QR code or barcode, your infrared image and all of your date and time stamped information will be stored to your predefined folders.

Specifications

Key features	PTi120
IFOV (spatial resolution)	7.6 mRad
Infrared resolution	120 x 90 (10,800pixels)
Field of view	50° H x 38° V
Distance to spot	130:1
Temperature measurement range (not calibrated below -10 °C)	-20 ° C to 150 ° C
Focus system	Fixed focus, minimum focus distance 22.8 cm
USB	Mini USB used to transfer image to PC
Wifi	Yes
Fluke Connect® Instant Upload	Yes, connect your camera to your building's WiFi network, and images taken automatically upload to the Fluke Connect® system or your local server for storage and viewing on your PC (802.11 bgn (2.4 GHz))
Image quality	
IR-Fusion technology	Yes, adds the context of the visible details to your infrared image
AutoBlend mode	Continuous 0% to 100%
Touchscreen display	3.5" (landscape), 320 x 240 LCD
Rugged, ergonomic design	Yes
Thermal sensitivity (NETD)	60 mK
Frame rate	9 Hz
Data storage and image capture	
Memory	≥ 2 GB internal flash memory
Image capture, review, save mechanism	One-handed image capture, review, and save capability
Image file formats	Non-radiometric (jpeg), or fully radiometric (.is2); no analysis software required for non-radiometric (jpeg) files
Software	Fluke Connect® desktop software—full analysis and reporting software with access to the Fluke Connect system
Export file formats with software	JPG, IS2
Measurement Range	-20 °C~150 °C
Battery	
Batteries (rechargeable)	Internal rechargeable lithium ion battery.
Battery life	≥ 2 hours continuous (without WiFi)
Battery charging time	≤ 1.5 hours
Battery charging system	Micro USB cord from product to PC
AC operation	With separate AC to USB adapter. Not included in box
Power saving	Automatic Shutdown: 5, 10, 15 and 20 minutes or never
Temperature measurement	
Temperature measurement range (not calibrated below -10 °C)	-20 ° C to 150 ° C
Accuracy	Target temp at or over 0 °C: Accuracy: ± 2° C or ± 2 %
On-screen emissivity correction	Yes
On-screen reflected background temperature compensation	Yes
Color palettes	
Standard palettes	6: Ironbow, Blue-Red, High Contrast, Amber, Hot Metal, Grayscale

Specifications *continued*

Key features	PTi120
General specifications	
Color alarms (temperature alarms)	High temperature, low temperature, and isotherms (within range)
Infrared spectral band	8 µm to 14 µm (long wave)
Operating Temperature	-10 °C to +50 °C (14 °F to 122 °F)
Storage Temperature	-40 °C to +70 °C (-40 °F to 158 °F)
Relative humidity	95 % non-condensing
Center-point temperature	Yes
Spot temperature	Hot and cold spot markers
Safety	EN 61010-1: CAT none, pollution degree 2, EN 60825-1: Class 2, EN 60529, EN 62133 (lithium battery)
Electromagnetic compatibility	EN301 489-1 V2.1.1 EN301489-17 V3.1.1
US FCC	CFR, Part 15C
Vibration and shock	2G, IEC 68-2-6 and 25G, IEC 68-2-29
Drop	1 meter
Size (H x W x L)	8.9cm x 12.7cm x 2.5cm (3.5 in x 5.0 in x 1.0 in)
Weight	0.233 kg (0.514 lb)
Enclosure rating	IP54
Warranty	Two-years
Supported languages	Czech, Dutch, English, Finnish, French, German, Hungarian, Italian, Japanese, Korean, Polish, Portuguese, Russian, Simplified Chinese, Spanish, Swedish, Traditional Chinese, and Turkish

Ordering information

FLK-PTi120 9HZ 120 x 90 Thermal Imager; BY2; 9 HZ

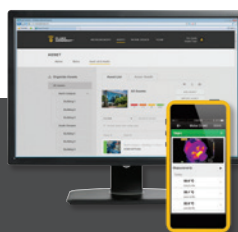
FLK-PTi120 9HZ/JP 120 x 90 Thermal Imager;
BY2; 9 HZ, Japan

FLK-PTi120 9HZ/CN 120 x 90 Thermal Imager;
BY2; 9 HZ, China

Included

Infrared camera; USB cable; soft transport bag;
adjustable lanyard. Available by free download:
Fluke Connect software and user manual.

Visit your local Fluke website
or contact your local Fluke
representative for more information.



Share images from the field. Collaborate and report immediately.

Get the most out of your PTi120. Download Fluke Connect today.
Save time by sending your images to the team while working in the field.

The Fluke Infrared Cameras are part of a growing system of connected test
tools and equipment maintenance software.

Find out more at **flukeconnect.com**



Fluke. *Keeping your world
up and running.®*

Fluke Corporation
PO Box 9090, Everett, WA 98206 U.S.A.

Fluke Europe B.V.
PO Box 1186, 5602 BD
Eindhoven, The Netherlands

For more information call:

In the U.S.A. (800) 443-5853 or
Fax (425) 446-5116
In Europe/M-East/Africa +31 (0)40 267 5100
or Fax +31 (0)40 267 5222
In Canada (800)-36-FLUKE or
Fax (905) 890-6866
From other countries +1 (425) 446-5500 or
Fax +1 (425) 446-5116
Web access: <http://www.fluke.com>

©2019 Fluke Corporation.
Specifications subject to change without notice.
3/2019 6011963a-en