

# Triple Gang Boxes

## 7 Hole

### Features

- 54 cubic inch capacity
- 1/2", 3/4" or 1" threaded hub
- Superior commercial quality die cast metal construction
- Boxes include closure plugs, grounding screws and mounting lugs
- Installation instructions included
- Gray

### Applications

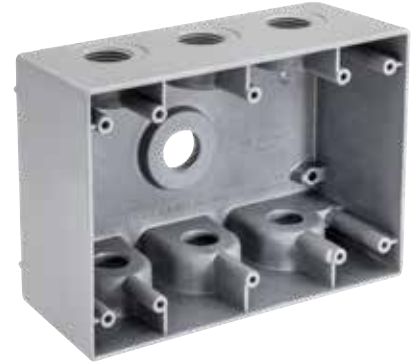
- UL listed for wet locations
- For wall or pole mounting of outdoor outlets, switches or floodlights

### Standard Material

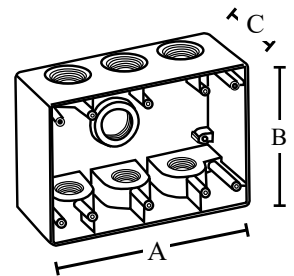
- Copper free aluminum

### Standard Finish

- Premium powder coat finish



UL\* Listed and 2011 NEC\*  
and NEMA\* 3R Compliant



Catalog Number	UPC	Threaded Hub	Ship Case	Weight/Case	A	Inches B	C
<b>WB3750</b>	86551	<b>1/2"</b>	5	11	6.374	4.56	2.625
<b>WB3775</b>	86552	<b>3/4"</b>	5	10	6.374	4.56	2.625
<b>WB37100</b>	86550	<b>1"</b>	5	9	6.374	4.56	2.625