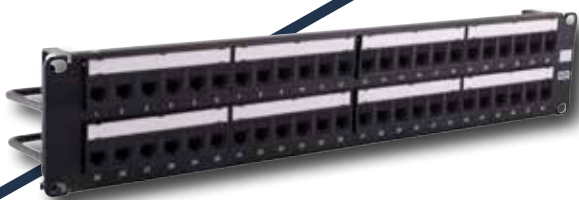


Catch the **Wi-Fi 6** wave

with Hubbell's NEXTSPEED ASCENT 6A Cabling System



Wi-Fi 6 exceeds 10Gb per second. Hubbell's Category 6A cabling system supports up to 10GBASE-T, providing faster speeds, greater bandwidth, and the most efficient PoE delivery. Coast through Wi-Fi 6 and be prepared for Wi-Fi 7 with the Hubbell 25-Year Mission Critical® application assurance warranty.

MAXIMUM BANDWIDTH • HIGHEST POWER DELIVERY

Surface Mount Boxes

Description	1-Port	2-Port
Standard	HSB1xx	HSB2xx
UL Plenum Rated	HSB1xxP	HSB2xxP

xx = Color: **BK** (Black), **EI** (Electric Ivory), **GY** (Gray), **OW** (Office White), **W** (White)



NEXTSPEED® Ascent Category 6A Jacks with COBRA-LOCK Termination

Unit of Measure	Catalog No.
Single pack	HJU6Axx
25-pack	HJU6Axx24

xx = Color: **BK** (Black), **B** (Blue), **EI** (Ivory), **GL** (Gold), **GY** (Gray), **GN** (Green), **OW** (Office White), **OR** (Orange), **P** (Purple), **R** (Red), **W** (White), **Y** (Yellow)



TIA Guidance TSB-162-A

- Two ports of a minimum of Category 6A performance per WAP location

Specifying Cabling per Wireless Access Point Location

- Data rate:**
Recommended support of 10GBASE-T speeds
- Current carrying capacity:**
Recommended support proposed for PoE levels of at least 49W, and up to 100W
- Number of ports:**
Two to support 10GBASE-T with PoE or to support link aggregation

NEXTSPEED® Ascent Category 6A Patch Panels

Format	Width Inches (mm)	Height Inches (mm)	Ports	Rack Units	Catalog No.
Straight*	19" (483)	1.75" (45)	24	1	HPJ6A24
		3.50" (89)	48	2	HPJ6A48
Angled**	19" (483)	1.75" (45)	24	1	HPJ6A24A
		3.50" (89)	48	2	HPJ6A48A

*Versions without cable management bar available as HP6A24E and HP6A48E.

**Angled panel protrudes 4.46" from plane of the rack; one extra inch of space recommended between door and panel



NEXTSPEED® Ascent Category 6A Reduced Diameter Cable

NVP: Plenum 71%, Riser 66%; 1000ft

Plenum		Riser	
Reel in a Box	Spool	Reel in a Box	Spool
C6ASPDsxx	C6ASPPDsxx	C6ASRDsxx	C6ASPRDsxx

xx = Color: **BK** (Black), **B** (Blue), **GY** (Gray), **GN** (Green), **OR** (Orange), **P** (Purple), **R** (Red), **W** (White), **Y** (Yellow)

NEXTSPEED® Ascent Category 6A UTP Cable

NVP: Plenum 71%, Riser 68%; 1000ft

Plenum	Riser
C6ASPxx	C6ASRxx

xx = Color: **BK** (Black), **B** (Blue), **GY** (Gray), **GN** (Green), **OR** (Orange), **P** (Purple), **W** (White), **Y** (Yellow)

NEXTSPEED® Ascent Category 6A Patch Cords

	Single Pack	24-Piece Bulk Pack
Standard; nominal O.D. 0.290"	HC6Axxyy	HC6Axxyy
Low Diameter; nominal O.D. 0.186"	HCL6Axxyy	HC6LAxxyy

xx = Color: **BK** (Black), **B** (Blue), **GY** (Gray), **GN** (Green), **OR** (Orange), **PK** (Pink), **P** (Purple), **R** (Red), **W** (White), **Y** (Yellow)

yy = Standard Length:
01 (1'), **03** (3'), **05** (5'), **07** (7'), **10** (10'), **15** (15'), **20** (20').
Made-to-order lengths are available

