

## E26 6" Trim Series

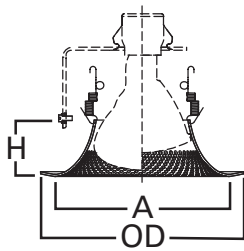
### DESCRIPTION

Perftex™ baffle trim with self-flange in the 6" trim family for use in recessed downlighting. Compatible for use in Halo and other housings.

Catalog #		Type
Project		
Comments		Date
Prepared by		

### SPECIFICATION FEATURES

- Perforated pattern baffle with contour for use with reflector lamps
- Coil spring retention
- Self-flanged trim ring sized to hide gaps caused by construction tolerances



#### Dimensions:

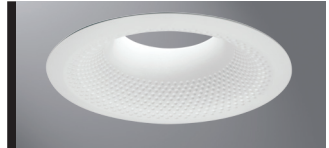
A: 6-5/8" [169mm]

H: 2-1/8" [54mm]

OD: 7-3/4" [197mm]

Housings		Max Lamp Compatibility
H7ICT	H7RICT	
H7ICAT	H7RICAT	50W PAR30S, 60W PAR30L, 65W BR30
E7ICAT	E7RICAT	
H27ICAT	E27ICAT	50W PAR30S, 60W PAR30L,
H27RICAT	E27RICAT	50W BR30
H7T	E7TAT	
H7RT	E7RTAT	75W PAR30S, 75W PAR30L, 65W BR30
H7TCP		
H27T	E27TAT	75W PAR30S, 75W PAR30L, 65W BR30
H27RT	E27RTAT	

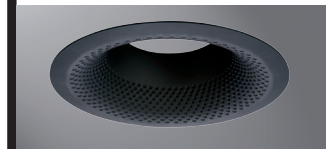
Compatible with Halogen, Incandescent, LED\* or CFL\* lamps.



**6110WB**  
White Perftex Baffle,  
White Trim



**6110BB**  
Black Perftex Baffle,  
White Trim



**6110BKBB**  
Black Perftex Baffle,  
Black Trim

**6110**

6-Inch Perftex Baffle

### ORDERING INFORMATION

SAMPLE NUMBER: 6110WB

Trim	Finish
6110= 6" Perftex Baffle, Self-flange	WB=White Perftex baffle, white trim BB=Black Perftex baffle, white trim BKBB=Black Perftex baffle, black trim

### HALO HOUSING COMPATIBILITY

Trim #	Style	H7ICT	H7ICAT	H7RICT	H7RICAT	E7ICAT	E7RICAT	H7UICAT	H7ICTNB
6110	Baffle	•	•	•	•	•	•	—	—
		H7ICATNB	E7ICATNB	H27ICAT	H27RICAT	E27ICAT	E27RICAT		
		—	—	•	•	•	•		
		H7T	H7TCP	H7RT	E7TAT	E7RTAT	H7TNB	E7TATNB	H27T
		•	•	•	•	•	—	—	•
		H27RT	E27TAT	E27RTAT					
		•	•	•					

For use in select other's housings, refer to U.L. Classification list at [www.cooperlighting.com](http://www.cooperlighting.com)

\*UL1993 listed LED & CFL equivalent lamps permitted. Consult lamp manufacturer for conditions of use. Cooper Lighting Solutions does not warranty the lamp.



Select trims are classified for use in other's housings.  
See [www.cooperlighting.com](http://www.cooperlighting.com)