

Project		Catalog #		Type	
Prepared by		Notes		Date	



Metalux

WNLED

Utility LED Wraparound

Typical Applications

Commercial • Schools • Institutional • Retail • Residential

Interactive Menu

- Order Information [page 2](#)
- Photometric Data [page 3](#)
- Product Warranty

Product Certification



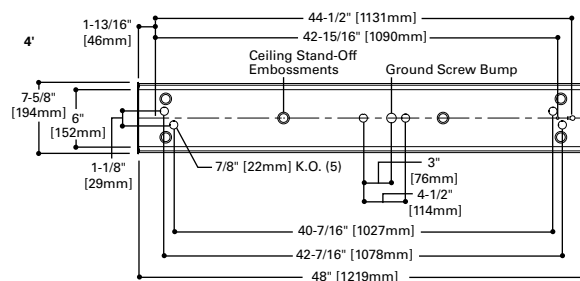
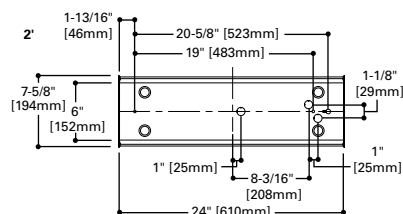
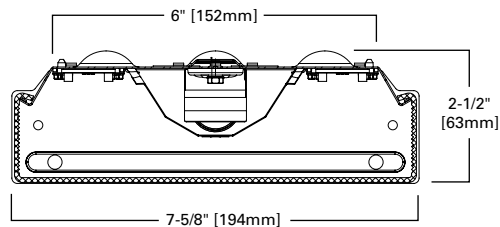
Product Features



Top Product Features

- 4 ft. and 2 ft. product configurations
- Frost lens offers best-in-class uniform illumination
- UNV (120V-277V) 0 to 10V dimmable driver
- Color Temperature (CCT): 3000K, 3500K, 4000K, 5000K
- Ideal for single or continuous row applications

Dimensional and Mounting Details



Order Information

SAMPLE ORDER NUMBER: **4WNLED-LD4-40SL-F-UNV-L840-CD1-U**

Length	Series	Lamp Type	Lumen Output	Lens	Voltage	Emergency Options
Length	Series ⁽³⁾	Lamp Type	Lumen Output	Lens	Voltage	Emergency Options ⁽⁶⁾
2=2 ft. 4=4 ft.	WNLED=Utility LED Wraparound	LD4=LED	28SL=2800 ⁽¹⁾ 32SL=3200 40SL=4000 50SL=5000	F=Frost Acrylic (standard)	347=347V ⁽²⁾ 480=480V ⁽²⁾ UNV=Universal Voltage 120-277	EL7W=7-watt, 120V-277V emergency battery pack installed ^{(4), (5)} EL14W=14-watt 120V-277V emergency battery pack installed ^{(4), (5)}
Notes (3) DesignLights Consortium® Qualified and classified for DLC Standard, refer to www.designlights.org for details.			Notes (1) 2 ft. model.		Notes (2) 4 ft. model only.	Notes (4) With integral test switch/indicator/laser test. For approximate delivered lumens multiply the lumens per watt of the desired fixture by the wattage of the emergency battery pack (100 lm/W x 7=700 lumens). IES-format photometry for luminaire under emergency operation available.(5) Emergency options not available for 2 ft. versions. (6) Emergency options use taller ballast cover that alters appearance.

CCT Options	Driver Type	Number of Drivers	Packaging	Accessories
CCT Options	Driver Type	Number of Drivers	Packaging	Accessories (order separately)
L830=3000K L835=3500K L840=4000K L850=5000K	CD=0-10V Dimming Driver (10%-100% Dimming)	1=1 Driver	U=Unit Pack	SCF=Fixed Stem Set (Specify Length), (2 Per Fixture) SCS=Swivel Stem Set (Specify Length), (2 Per Fixture) SCA=Adjustable 48" Stem Set (2 Per Fixture) A1B/Spacer-U=Spacer 1-1/2" to 2-1/2" from ceiling (Use 2 Per Fixture) D82A140WNLED224 PK=Replacement Lens for 2WNLED D82A140WNLED248 PK=Replacement Lens for 4WNLED

Product Specifications

Construction

- Housing consists of die formed cold rolled steel
- Ends formed with the housing for strength and provisions for continuous row aligners.
- Steel end plates with 7/8" KO and light-seal embossment
- Driver cover can be removed without tools

Controls

- WNLED has a standard 0-10V continuous dimming driver. Works with most 0-10V control/dimmer.
- Combine with energy saving products like occupancy sensors, daylighting controls and lighting relay panels to maximize energy savings
- Dimming range is 10% to 100% ; varies by control device

Electrical

- LED's available in 3000K, 3500K, 4000K and 5000K with a min. 80 CRI
- Projected life at 70% lumen maintenance is nearly 150,000 hours with TM21 rating up to L88 > 60,000 hours
- Electronic drivers are 0-10V dimming at 120-277V, 347V, and 480V applications

Emergency Battery Pack Option

- Optional 120V-277V integral emergency battery pack at 7 or 14-watts
- The 90-minute batteries provide constant power to the LED system, ensuring code compliance
- The patented EZ Key prevents accidental discharge of the battery during installation

Finish

- Multistage iron phosphate pretreatment ensures maximum bonding and rust inhibitor
- High reflective paint after fabrication, baked white enamel finish is standard

Channel/Wireway Cover

- Die formed heavy gauge steel
- Tight fit for ease of maintenance

Shielding

- Acrylic, high performance, frost blend
- Sides have internal linear prisms and bottom has pyramidal prisms for brightness control

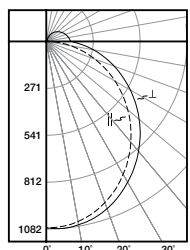
Installation

- Fixture may be surface, pendant, or stem mounted.
- See accessories below for ordering information

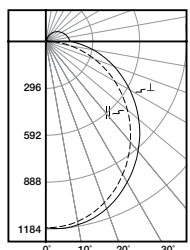
Compliance

- Indoor luminaires are cULus listed for 25°C ambient environments, damp location listed, RoHS compliant, and LED modules comply with IESNA LM-79 and LM-80 standards
- DesignLights Consortium® Qualified and classified for DLC Standard, refer to www.designlights.org for details
- Suitable for use in clothes closets when installed in accordance with the NEC 410.16 spacing requirements
- Can be used for State of California Title 24 high efficacy luminaire

Photometric Data

 View IES files


4WNLED-LD4-32SL-F-UNV-L835-CD1-U
 Electronic Driver
 Linear LED 3500K
 Spacing criterion: (II) 1.22 x mounting height,
 (⊥) 1.29 x mounting height
 Lumens: 3682
 Input Watts: 28.8W
 Efficacy: 127.8 LPW
 Test Report:
 4WNLED-LD4-32SL-F-UNV-L835-CD1-U.IES



4WNLED-LD4-40SL-F-UNV-L835-CD1-U
 Electronic Driver
 Linear LED 3500K
 Spacing criterion: (II) 1.22 x mounting height,
 (⊥) 1.29 x mounting height
 Lumens: 4029
 Input Watts: 32.2W
 Efficacy: 125.1 LPW
 Test Report:
 4WNLED-LD4-40SL-F-UNV-L835-CD1-U.IES

Energy and Performance Data by Catalog

Lumen Type	Length	Catalog Number	Nominal 3500K Lumens	Watts	lm/W
Standard	2 ft.	2WNLED-LD4-28SL-F-UNV-L8XX-CD1-U	2861	24.2	118
Standard	4 ft.	4WNLED-LD4-32SL-F-UNV-L8XX-CD1-U	3682	28.8	128
Standard	4 ft.	4WNLED-LD4-40SL-F-UNV-L8XX-CD1-U	4029	32.2	125
Standard	4 ft.	4WNLED-LD4-50SL-F-UNV-L8XX-CD1-U	5064	42.4	118

CCT Table

Approximate Color Temperature Multiplier	
5000K	1.02
4000K	1.02
3500K	1.00
3000K	0.97

Shipping Data

Catalog No.	Wt.
2WNLED	5 lbs.
4WNLED	9 lbs.