

## DESCRIPTION

The HLA4 is a 4-inch ultra-thin round or square LED directional with remote driver / junction box suitable for new construction and remodel applications. Field selectable color temperature and high color rendering provide excellent color performance. Simplified installation in drywall or suspended ceilings eliminates recessed cans saving time and money. Installs from below the ceiling in as little as 1-1/2" plenum height, can be used in direct contact with insulation and is airtight. Use for accent or task lighting in low to medium height ceilings where energy savings, long life and economy are required.

## SPECIFICATION FEATURES

### HOUSING

- Die cast aluminum mounting frame with round or square flange
- Gimbal rotates 360° and tilts ± 30° holding any aiming angle
- Aluminum heat sink provides passive thermal cooling achieving L70 at 50,000 hours in IC and non-IC applications

### GASKET

- Closed cell gasket achieves restrictive airflow and wet location listing without additional gaskets or caulking

### OPTIONAL MOUNTING FRAME

- Pre-galvanized steel mounting frame locates fixture fittings during electrical rough in and provides cutout guidance for drywall contractor
- Provides tool-less attachment of remote driver / junction box

### OPTICS

- Flood - FL  
Optical design creates a clean, uniform 40-degree beam distribution
- Very Wide Flood - VWFL  
Reflector organizes source flux into VWFL distribution, useful for accent and task lighting

### LED ARRAY

- Plurality of mid power LED's provides a uniform source with high efficiency and long life
- Available in 90 CRI minimum, R9 greater than 50 provides high color rendering
- Field selectable color temperature, select 2700, 3000, 3500, 4000 or 5000K CCT, color accuracy within 4 SDCM
- Meets ENERGY STAR® color angular uniformity requirements, deviation is less than 0.006 u' v'

### REMOTE DRIVER / JUNCTION BOX

- Pre-galvanized steel driver / junction box with captive hinged junction box cover
- Listed for (6) #12 AWG 90° C splice conductors, 2-in, 2-out plus (2) ground
- (2) 1/2" conduit pry-outs
- (2) Slide-N-Side™ non-metallic (NM) wire traps allows wiring outside the box
- Accepts 14-2, 14-3, 12-2, 12-3 U.S. and 14-2, 14-3, 12-2 Canadian NM cable
- (3) 4-port push wire nuts with clear caps for quick and reliable mains voltage connections
- Integral mounting slots facilitate direct mounting to building structure or mounting frame

### DRIVER

- 120V 60 Hz constant current driver provides noise free operation
- Continuous, flicker-free dimming from 100% to 5% with select leading or trailing edge 120V phase cut dimmers
- Plenum rated inline electrical quick connect provides low voltage connection to fixture fitting

### INSTALLATION

- Can be installed in 1/2" to 1-1/4" thick ceilings
- Cutout utilizes standard round hole saw sizes, cutout template provided
- Heat treated springs hold fixture fitting securely in the ceiling eliminating light leaks
- Can be removed from below the ceiling for service or replacement

Catalog #		Type
Project		
Comments		Date
Prepared by		

### COMPLIANCE

- cULus certified type IC suitable for direct contact with air permeable insulation
- Not recommended for use in direct contact with spray foam insulation, reference NEMA LSD57-2013
- Wet location listed and IP44 ingress protection
- Airtight per ASTM-E283-04
- Suitable for use in clothes closets when installed in accordance with the NEC 410.16 spacing requirements
- EMI/RFI emissions per FCC 47CFR Part 15 consumer limits
- Contains no mercury or lead and RoHS compliant
- Photometric testing in accordance with IES LM-79-08
- Lumen maintenance projections in accordance with IES LM-80-08 and TM-21-11
- Can be used for State of California Title 24 high efficacy LED compliance under JA8, reference Modernized Appliance Efficiency Database System (MAEDBS) for 2016 JA8 High Efficacy Lighting
- ENERGY STAR® certified, reference "Certified Light Fixtures" database

### WARRANTY

- Five year limited warranty, consult website for details.  
[www.cooperlighting.com](http://www.cooperlighting.com)



## HLA4

**4-Inch LED Directional  
with Remote Driver /  
Junction Box**

**Flood (FL) or  
Very Wide Flood (VWFL)**

**Round or Square Flange**

**Up to 700 Lumens  
Field Selectable CCT**

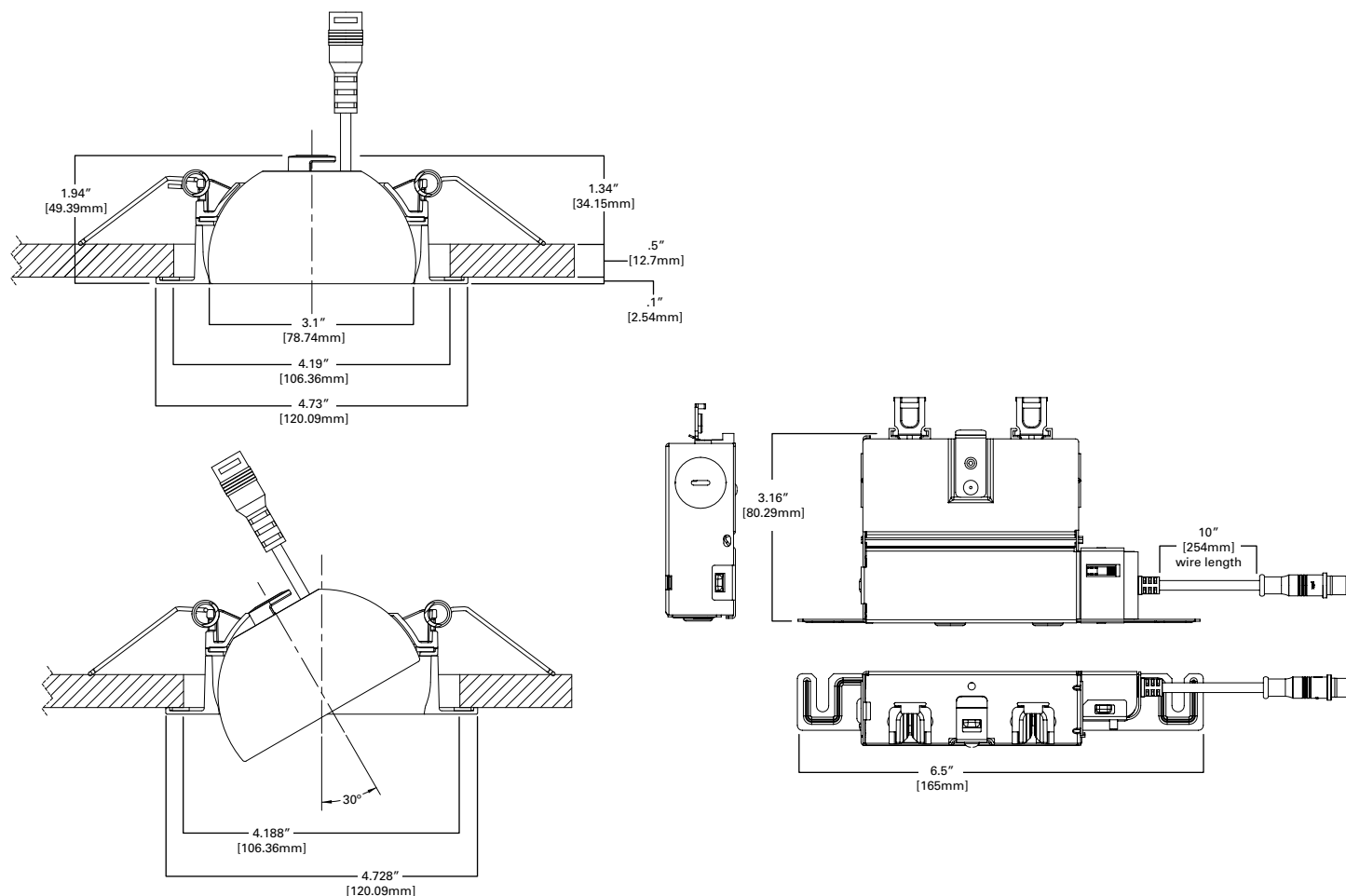
ENERGY DATA	
Lumens	600 Series
Input Voltage	120V
Input Current	90 (mA)
Input Power	10.5 (W)
Efficiency	60 (LPW)
Inrush (A)	1.9 A @ 54mS
THD	≤ 20%
PF	≥ 0.90
T Ambient	-30° - +40°C
Sound Rating	≤ 22 dba



Refer to ENERGY STAR® Certified Products List.  
Can be used to comply with California Title 24  
High Efficacy requirements.  
Certified to California Appliance Efficiency  
Database under JA8.



## DIMENSIONS



## ORDERING INFORMATION

SAMPLE NUMBER: HLA406VWFL9FS1EMWR

Models	Lumens	Distribution	CRI / CCT	Driver	Finish	Packaging
<b>HLA4</b> = 4-Inch LED round directional with remote driver / junction box	<b>06</b> =600 lumens (nominal)	<b>FL</b> =40° flood distribution <b>VWFL</b> =80° very wide flood distribution	<b>9FS</b> =90 CRI minimum, field selectable 2700, 3000, 3500, 4000 or 5000K CCT	<b>1E</b> = 120V 50-60Hz, LE & TE phase cut 5% dimming	<b>MW</b> = matte white flange	<b>R</b> = recyclable 4-color unit carton suitable for point of purchase merchandizing display

## Accessories

**Oversized Trim Ring**

HLB4ROTMW = 4" round oversized trim, matte white

**Decorative Trim Ring**

HLB4TRMMW = 4" round decorative overlay, matte white

HLB4TRMSN = 4" round decorative overlay, satin nickel

HLB4TRMTBZ = 4" round decorative overlay, tuscan bronze

**Mounting Frame**

HL4RSMF = 4" round and square mounting frame

**Extension Cables**

HLB06FSEC - 6 ft. extension cable

HLB12FSEC - 12 ft. extension cable

HLB20FSEC - 20 ft. extension cable

SAMPLE NUMBER: HLA4S06FL9FS1EMWR

Models	Lumens	Distribution	CRI / CCT	Driver	Finish	Packaging
<b>HLA4S</b> = 4-Inch LED square directional with remote driver / junction box	<b>06</b> =600 lumens (nominal)	<b>FL</b> =40° flood distribution <b>VWFL</b> =80° very wide flood distribution	<b>9FS</b> =90 CRI minimum, field selectable 2700, 3000, 3500, 4000 or 5000K CCT	<b>1E</b> = 120V 50-60Hz, LE & TE phase cut 5% dimming	<b>MW</b> = matte white flange	<b>R</b> = recyclable 4-color unit carton suitable for point of purchase merchandizing display

## Accessories

**Oversized Trim Ring**

HLB4SOTMW = 4" square oversized trim, matte white

**Decorative Trim Ring**

HLA4STRMMW = 4" square decorative overlay, matte white

HLA4STRMSN = 4" square decorative overlay, satin nickel

HLA4STRMTBZ = 4" square decorative overlay, tuscan bronze

**Mounting Frame**

HL4RSMF = 4" round and square mounting frame

**Extension Cables**

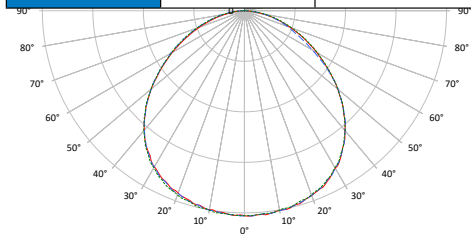
HLB06FSEC - 6 ft. extension cable

HLB12FSEC - 12 ft. extension cable

HLB20FSEC - 20 ft. extension cable

## PHOTOMETRIC DATA

HLA406VWFL9FS1EMWR		
Luminaire lumens		670
Input watts		10.1
LER (LPW)		66.34
Spacing Criteria	0-180	1.18
	90-270	1.18
	Diagonal	1.28
Beam angle (degrees)		96.6
Field angle (degrees)		156.7
Zonal lumen	Lumens	% Lumens
0-30	238.1	35.53
0-40	361.4	53.94
0-60	569.8	85.04
0-90	670.0	100



\* Tested in accordance with IES LM63. Field results may vary.

## Color Metric Summary - 3000K

TM-30-15	R <sub>f</sub> = 90
	R <sub>g</sub> = 100
CRI/CIE	R <sub>a</sub> = 94.7
	R <sub>9</sub> = 69

CCT - Range of 2700K- 5000K

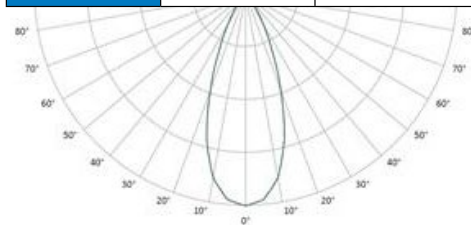


## Product Specifications

PRODUCT SPECIFICATIONS	
Lumens	660
Watts	10.15
Lumens Per Watt (Efficacy)	65
Color Accuracy (CRI)	94.6
Light Color (CCT)	3000K
Correlated Color Temperature (CCT)	
warm white	soft white
2700K	3000K
4500K	6500K

HLA4 4-inch VWFL	CCT	Lumens	Power (W)	LPW
Field Selectable CCT	2700K	704	10.1	69.7
	3000K	670	10.1	66.4
	3500K	673	10.1	66.6
	4000K	671	10.1	66.4
	5000K	656	10.1	65.0

HLA406FL9FS1EMWR		
Luminaire lumens		711
Input watts		10.2
LER (LPW)		69.71
Spacing Criteria	0-180	0.66
	90-270	0.66
	Diagonal	0.64
Beam angle (degrees)		39.4
Field angle (degrees)		69.3
Zonal lumen	Lumens	% Lumens
0-30	546.8	76.9
0-40	625.7	88
0-60	685.4	96.4
0-90	711	100



\* Tested in accordance with IES LM63. Field results may vary.

## Color Metric Summary - 3000K

TM-30-15	R <sub>f</sub> = 90
	R <sub>g</sub> = 100
CRI/CIE	R <sub>a</sub> = 92
	R <sub>9</sub> = 59

CCT - Range of 2700K- 5000K



## Product Specifications

PRODUCT SPECIFICATIONS	
Lumens	650
Watts	10
Lumens Per Watt (Efficacy)	65
Color Accuracy (CRI)	90
Light Color (CCT)	3000K
Correlated Color Temperature (CCT)	
warm white	soft white
2700K	3000K
4500K	6500K

HLA4 4-inch VWFL	CCT	Lumens	Power (W)	LPW
Field Selectable CCT	2700K	689	10.2	67.5
	3000K	711	10.2	69.72
	3500K	730	10.2	71.58
	4000K	745	10.2	73.04
	5000K	759	10.2	74.39

\*Additional photometric ies files available online.