

Project		Catalog #		Type	
Prepared by		Notes		Date	



## WaveLinx Wireless

### Wireless 120VAC PoE Injector

Provides a 120VAC connection option for the PoE powered WaveLinx Wireless Area Controller (WAC)

#### Typical Applications

Office • Education • Healthcare • Hospitality • Retail  
Industrial • Manufacturing

#### Interactive Menu

- Order Information [page 2](#)
- Additional Resources [page 3](#)
- Connected Systems [page 4](#)
- Product Warranty

#### Product Certification



- Complies with the following electromagnetic requirements:  
EN 55032 Class B (Emissions)  
EN 55024 (Immunity)  
VCCI

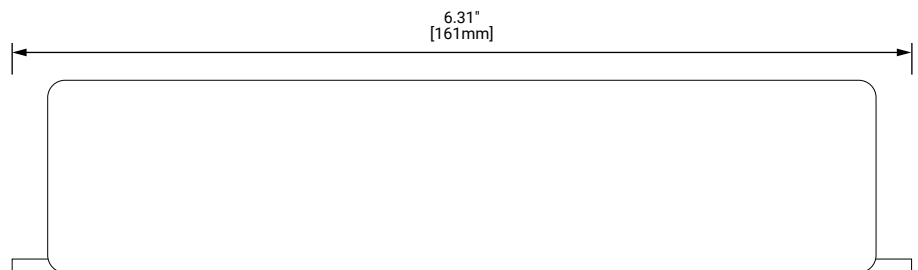
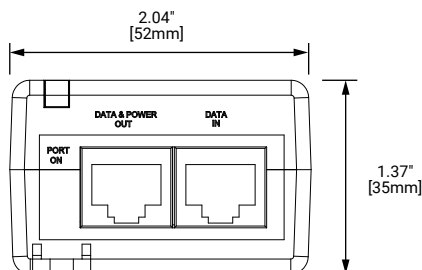
#### Product Features



#### Top Product Features

- Compact and cost effective, fully IEEE 802.3af compliant solution
- 110-240VAC power connection for WaveLinx Wireless Area Controller
- Safe and reliable power over existing Ethernet infrastructure
- Stackable and compact
- Plug-and-play installation
- Guaranteed uptime

#### Dimensional Details



## Order Information

All WaveLinx Connected Lighting (WCL) system accessories require at least one Wireless Area Controller (WAC) for communications. Ensure the bill of material includes one of the following components.

### Catalog Number

Catalog Number	Description
WPOE-120	120VAC to PoE Injector

## Required Accessories

### Catalog Number

Catalog Number	Description
WAC-POE	Wireless Area Controller, POE powered

## Product Specifications

### Key Features

- Compact and cost effective, fully IEEE 802.3af compliant solution
- 110 - 240VAC power connection for WaveLinx Wireless Area Controller
- Safe & reliable power over existing Ethernet infrastructure
- Stackable and compact
- Plug-and-play installation
- Guaranteed uptime

### Mechanical

**Size:** 2.04" W x 1.37" H x 6.31" L (52mm x 35mm x 161mm)

**Weight:** 0.44 lbs (200g)

### Environment:

- **Operating temperature:** 32°F to 104°F (0°C to 40°C)
- **Storage temperature:** -4° F to 158° F (-20° C to 70° C)
- **Relative humidity operating:** 10% to 90% RH (non-condensing)
- For indoor use only

**Mounting:** Surface

**Connectors:** Shielded RJ-45, EIA 568A and 568B

### Electrical

#### AC Input Voltage:

- 110-240 Vac (+/-10%)

#### AC Input Current:

- 0.43A @100-240 Vac

#### Power over Ethernet Output:

- **Output Voltage:** 48Vdc
- **User Port Power:** 15.4W

### Hardware Specifications

#### Channel Power:

- Green LED

### Standards/Ratings

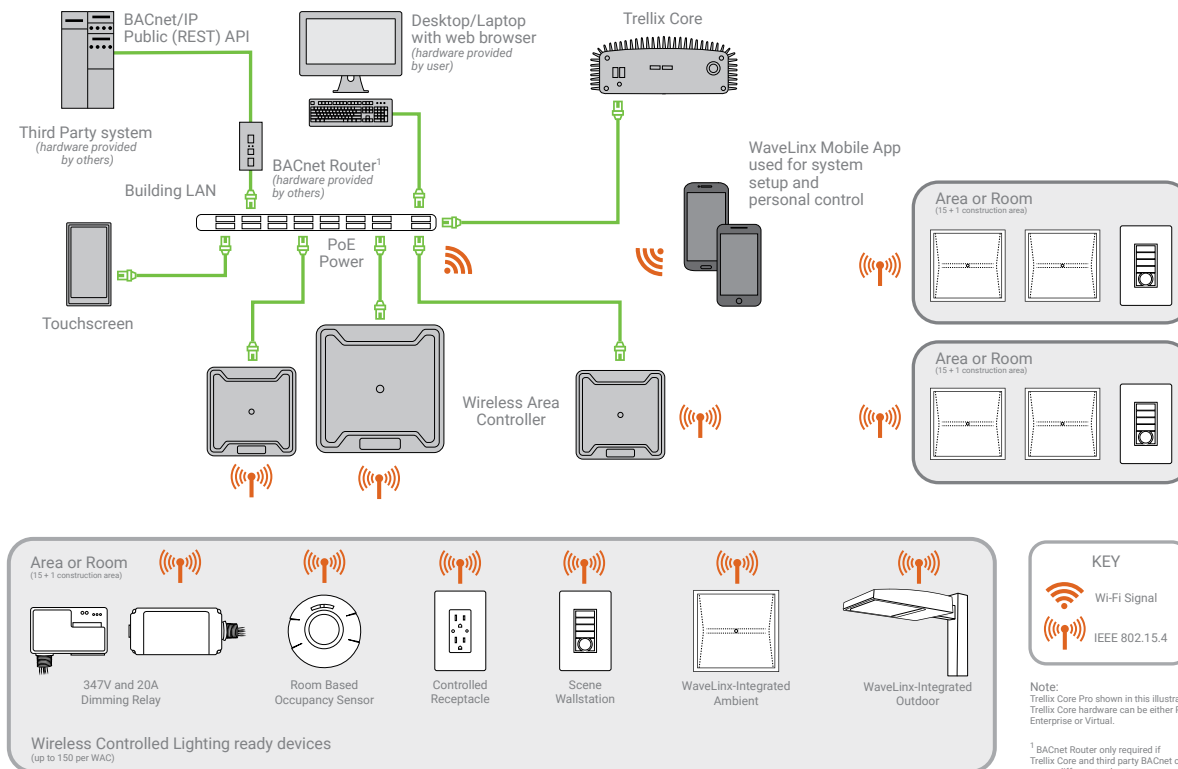
- cULus Listed - Information Security Equipment Safety (UL 60950)
- FCC Part 15, Class B
- Complies with the following electromagnetic requirements:
  - EN 55032 Class B (Emissions)
  - EN 55024 (Immunity)
- Power over Ethernet IEEE 802.3af
- RoHS Compliant
- WEEE Compliant
- CE

### Warranty

Five year warranty standard

## System Architecture

This diagram shows the main components of the WaveLinx Connected Lighting (WCL) system. The WCL system communicates using wireless mesh technology based on the 802.15.4 standard. A POE LAN connection for each Wireless Area Controller (WAC) is required for power and data access to the building wireless network. System setup is achieved through a simple mobile application via wireless communication to the system.



## Overview

The 120VAC PoE Injector provides IEEE802.3af power for the WaveLinx Wireless Area Controller. The injector enables 120VAC connectivity for the Wireless Area Controller, particularly useful for non-enterprise applications. Two output Ethernet ports are included, one provides 15.4W of PoE power and the second data only.

## Control Systems

- Trellix

### Better Data. Better Decisions.

Trellix combined with our WaveLinX Connected Lighting System is a distributed network of LED lighting fixtures with integrated sensing and beacon technology that captures real-time data; making your facility smarter so you can make smarter decisions.

Trellix provides an open IoT platform and infrastructure that connects intelligent sensors leveraging the real-estate of the physical light fixture to solve higher complexity problems in a commercial building to deliver actionable insights through the aggregation of valuable data.

