

RLN

Recessed LED luminaire

Metalux





RLN



RLN Recessed LED luminaire

RLN blends modern styling with an innovative optical design. This contemporary, high quality luminaire provides superior visual comfort and is dedicated to the latest solid-state lighting and driver technology for optimal performance and energy efficiency. The RLN is compatible with all of today's popular ceiling systems and is available with a number of options and accessories for application versatility. The series is an excellent choice for commercial office spaces, schools, hospitals or retail merchandising areas.

High performance efficacy up to 139 lm/W

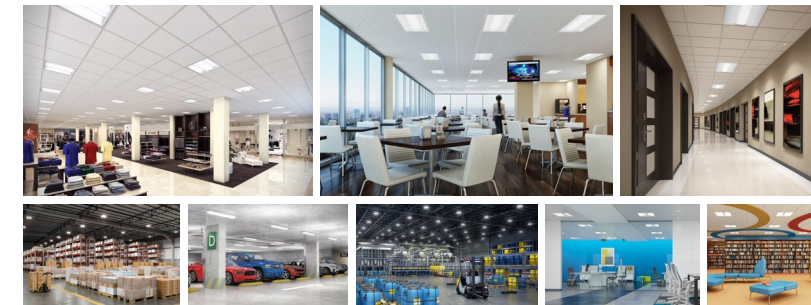
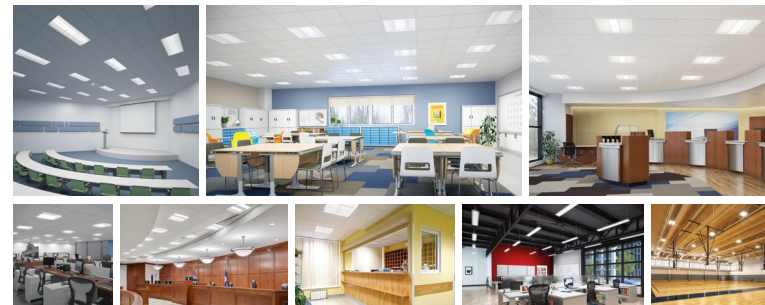
Available in recessed and surface versions

Advanced optical control

VividTune™ CCT tuning, 3000K - 5000K and 2700K - 6500K

Over 59% energy savings compared to fluorescent

Buy with confidence - proven Metalux quality



Performance

High-performance efficacy up to 139 lumens per watt
Energy savings in excess of 59% compared to traditional fluorescent troffers
Three Correlated Color Temperatures (3000K, 3500K, 4000K) at typical 85 CRI
1' x 4': L92 @ 60,000 hrs., 2' x 2': L94 @ 60,000 hrs., 2' x 4': L93 @ 60,000 hrs.
Binning: Per ANSI, 3-step MacAdam ellipse

Energy data

2' x 4' RLN series			Popular fluorescent fixtures			Energy savings
Catalog number	Lumens*	Wattage	Fixture type	Lumens*	Wattage	
24RLN-LD5-67-UNV-L835-CD1-U	6755	53.9	Troffer 332	6629	81.7	-34%
24RLN-LD5-55-UNV-L835-CD1-U	5554	42.7	Parabolic 332	5646	83.0	-48%
24RLN-LD5-45-UNV-L835-CD1-U	4547	34.0	Indirect Basket 332	4583	83.7	-59%
			Spec Full Lens 228T5	4698	61.6	-44%
			Spec Dual Lens 228T5	4576	58.0	-41%
24RLN-LD5-42-UNV-L835-CD1-U	4208	31.2	Spec Full Lens 232	4413	50.6	-38%
			Troffer 232	4310	52.0	-40%
			Indirect Basket 232	3873	72.0	-56%

2' x 2' RLN series			Popular fluorescent fixtures			Energy savings
Catalog number	Lumens*	Wattage	Fixture type	Lumens*	Wattage	
22RLN-LD5-35-UNV-L835-CD1-U	3558	30.5	Troffer 2U6T8	3862	52.1	-41%
22RLN-LD5-31-UNV-L835-CD1-U	3155	26.6	Spec Full Lens 224	3080	51.5	-48%
			Spec Dual Lens 224	2975	52.0	-48%
			Parabolic 2U6T8	2791	63.1	-57%
22RLN-LD5-25-UNV-L835-CD1-U	2543	20.9	Troffer 317	2601	42.9	-51%
			Parabolic 317	2588	49.1	-57%
			Spec Dual Lens 214	2403	30.0	-30%

*Lumens listed are delivered lumens.

Compliance and approvals



Construction

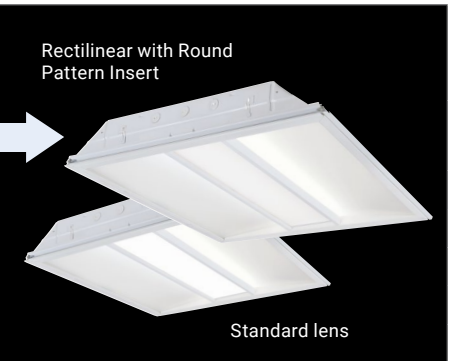
Recessed: 2' x 2', 2' x 4' and 1' x 4'
Shallow depth: 3.25"
Tool-less hinged door access
cULus damp location / IC Rated / RoHS compliant / DLC Qualified
Sustainable materials
Five-year warranty



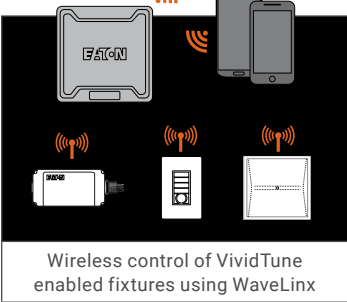
Options

Eight stocked lumen packages in two CCTs
– 2' x 2': 2,500 (20.9W) and 3,500 (30.5W)
– 2' x 4': 4,500 (34.0W) and 5,500 (42.7W)
Three lens options – Rectilinear Frosted, Rectilinear Square Perforated and Rectilinear Round Perforated
Universal (120V-277V) or 347V
Emergency – EL7W and EL14W
Surface mount field install kits
Flex wiring configurations
Chicago plenum rated version

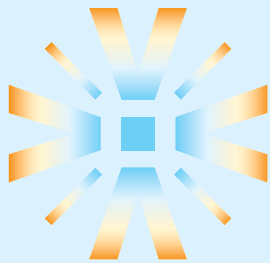
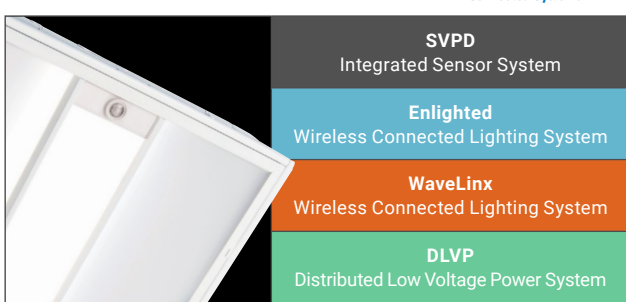
Shielding



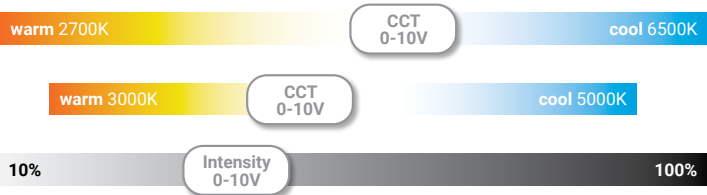
Controls



Connected Lighting Systems



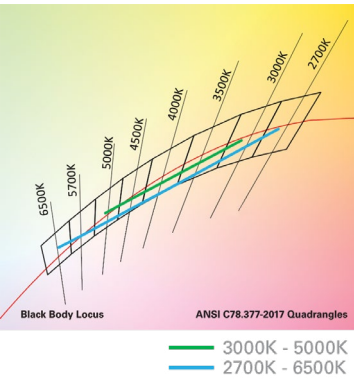
Provide the
power of preference
with color tuning solutions
from Cooper Lighting Solutions



VividTune
color tuning solutions

RLN LED with VividTune Tunable White

VividTune tunable white luminaires from Cooper Lighting Solutions deliver high-quality light in a broad range of continuously variable color temperatures and intensities. Create a dynamic environment by adjusting the ambient light warmer or cooler to influence mood, support the task at hand, or create a dramatic ambience. The ability to control correlated color temperature and intensity separately using simple controls is the next evolution of LED lighting for the commercial, educational, healthcare and hospitality space. The unparalleled flexibility and number of available lighting environments enable users to find the right light with tunable white.



Lighting Product Lines

Ametrix
AtLite
Corelite
Ephesus
Fail-Safe
Halo
Halo Commercial
Invue
io
Iris
Lumark
Lumière
McGraw-Edison
Metalux
MWS
Neo-Ray
Portfolio
RSA
Shaper
Streetworks
Sure-Lites

Controls Product Lines

Fifth Light Technology
Greengate
iLight (International Only)
iLumin
Zero 88

Connected Lighting Systems

Distributed Low-Voltage Power
HALO Home
iLumin Plus
Enlighted
WaveLinx
Trellix



Cooper Lighting Solutions

1121 Highway 74 South
Peachtree City, GA 30269
P: 770-486-4800
www.cooperlighting.com

Canada Sales
5925 McLaughlin Road
Mississauga, Ontario L5R 1B8
P: 905-501-3000
F: 905-501-3172

© 2020 Cooper Lighting Solutions
All Rights Reserved
Printed in USA
Publication No. BR519033EN
September 9, 2020 8:16 AM

Cooper Lighting Solutions is a registered trademark.

All other trademarks are property of their respective owners.

Product availability, specifications, and compliances are subject to change without notice.