

A modern interior space featuring a dark wood dining table with two upholstered chairs in the foreground. In the background, there is a large multi-paned window looking out onto a residential neighborhood. To the left, a white sofa and a wooden shelving unit with books and decor are visible. The ceiling is white with several square recessed LED lights installed.

# HALO<sup>®</sup>

RSQ Series  
Square LED downlight


A circular logo with a color gradient from red to blue. The number '5' is prominently displayed in the center, with the text 'select CCTable™ colors' below it.

5  
select CCTable™  
colors

HALO RSQ

get  
square  
with  
**HALO**






The RSQ is a family of all-purpose square lens LED modules. Available in fixed CCT (2700K, 3000K, 3500K or 4000K) or a field SeleCCTable CCT (2700K-5000K).

Available in three sizes optimized for use in HALO or compatible 4, 5 or 6-inch recessed housings, use to update existing installations or for new construction.

Wide distribution patterns work well in low to medium height ceilings providing general area illumination. Applications include living and dining areas, bedrooms, closets, hallways, bathrooms, kitchen, basements, soffits, and porches, anywhere a clean contemporary appearance is desired.



The SeleCCTable technology puts flexibility at your fingertips. By using the switch located on the driver junction box, the user can choose from a range of five color temperatures 2700K - 5000K.



2700K • 3000K • 3500K  
4000K • 5000K

## RSQ Designer Trim Rings

RSQ trims provide the ultimate in design freedom to match décor and interior finishes in a space. Halo offers satin nickel and tuscan bronze plated trims as well as a white trim that may be field painted to an alternate color prior to installation.

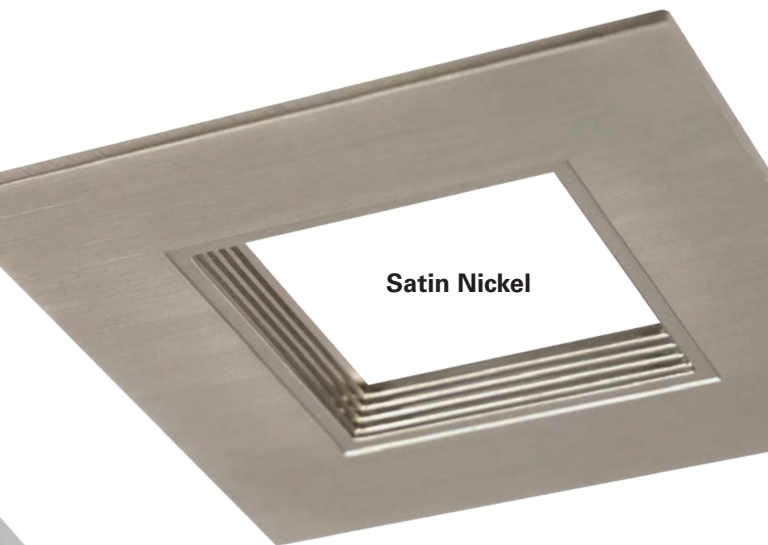


**White Baffle**  
*(Paintable)*

A square trim ring with a wide, flat outer flange and a recessed inner square. The inner square features a series of horizontal ridges or baffles. The entire piece is white and shown at an angle.

**White Splay**  
*(Paintable)*

A square trim ring with a wide, flat outer flange and a recessed inner square. The inner square has a smooth, flat surface. The entire piece is white and shown at an angle.



**Satin Nickel**



**Tuscan Bronze**



- Up to 800 lumens
- 90 CRI: 2700K, 3000K, 3500K, 4000K CCT
- Field selectable 2700K - 5000K<sup>1</sup>
- 9.8W, 120V
- L70 @ 70,000 hrs
- HALO matte white finish; alternate trim finishes available
- Friction blades for installation are pre-installed
- Compatible with most 4" recessed housings
- Dimmable to 5% with select dimmers
- Damp and wet location listed (shower rated)
- Rated for IC, ICAT and may be used in Non-IC housings
- AIR-TITE™ certified per ASTM-E283
- Five-year limited warranty

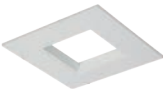
Ordering Information

SAMPLE NUMBER: RSQ4089301EMWWB

Models	Lumens	CRI / CCT
RSQ4 = 4" all- purpose square LED module	08=800 lumen (nominal)	927=90 CRI (min), 2700K CCT 930=90 CRI (min), 3000K CCT 935=90 CRI (min), 3500K CCT 940=90 CRI (min), 4000K CCT 9FS=90 CRI minimum, field selectable 2700, 3000, 3500, 4000 or 5000 K CCT <sup>1</sup>
Driver	Finish	Accessories
1E= 120V 60Hz, LE & TE phase cut 5% dimming	MWWB= matte white flange and baffle	RSQ4TRMMW = 4" square trim, matte white flange and splay, field paintable RSQ4TRMSNB = 4" square trim, satin nickel flange and baffle RSQ4TRMTBZB = 4" square trim, tuscon bronze flange and baffle

1. Coming soon.

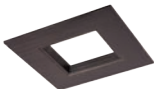
RSQ4 Designer Trims (Order Separately)



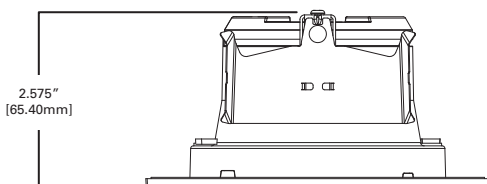
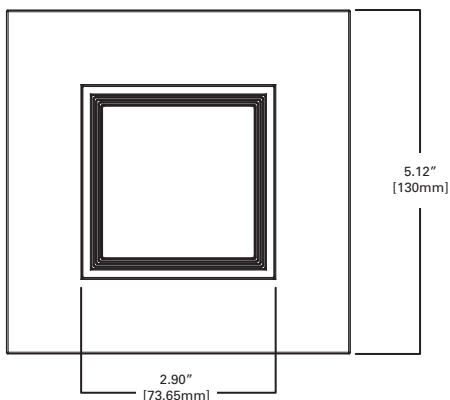
RSQ4TRMMW  
White (Paintable)



RSQ4TRMSNB  
Satin Nickel



RSQ4TRMTBZB  
Tuscan Bronze



ENERGY DATA				
Lumens	800 Series		Inrush (A)	0.69 A @ 14mS
Input Voltage	120V		THD	≤ 20%
Input Current	82 (mA)		PF	≥ 0.90
Input Power	9.8 (W)		T Ambient	-40° - +40°C
Efficiency	84.5 (LPW)		Sound Rating	≤ 21dba



Refer to ENERGY STAR® Certified Products List. Can be used to comply with California Title 24 High Efficacy requirements. Certified to California Appliance Efficiency Database under JA8.



- Up to 800 lumens
- 90 CRI: 2700K, 3000K, 3500K, 4000K CCT
- Field seleCCTable 2700K - 5000K<sup>1</sup>
- 9.8W, 120V
- L70 @ 70,000 hrs
- HALO matte white finish; alternate trim finishes available
- Torsion springs pre-installed
- Optional friction blades for installation
- Compatible with most 5" recessed housings
- Dimmable to 5% with select dimmers
- Damp and wet location listed (shower rated)
- Rated for IC, ICAT and may be used in Non-IC housings
- AIR-TITE™ certified per ASTM-E283
- Five-year limited warranty

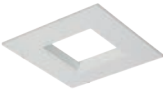
Ordering Information

SAMPLE NUMBER: RSQ5089301EMWWB

Models	Lumens	CRI / CCT
RSQ5 = 5" all- purpose square LED module	08=800 lumen (nominal)	927=90 CRI (min), 2700K CCT 930=90 CRI (min), 3000K CCT 935=90 CRI (min), 3500K CCT 940=90 CRI (min), 4000K CCT 9FS=90 CRI minimum, field selectable 2700, 3000, 3500, 4000 or 5000 K CCT <sup>1</sup>
Driver	Finish	Accessories
1E= 120V 60Hz, LE & TE phase cut 5% dimming	MWWB= matte white flange and baffle	RSQ5TRMMW = 5" square trim, matte white flange and splay, field paintable RSQ5TRMSNB = 5" square trim, satin nickel flange and baffle RSQ5TRMTBZB = 5" square trim, tuscon bronze flange and baffle

1. Coming soon.

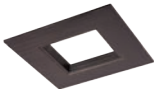
RSQ5 Designer Trims (Order Separately)



RSQ5TRMMW  
White (Paintable)

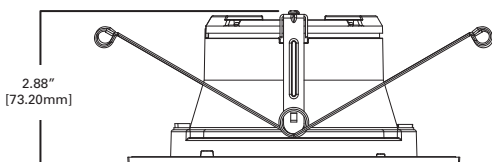
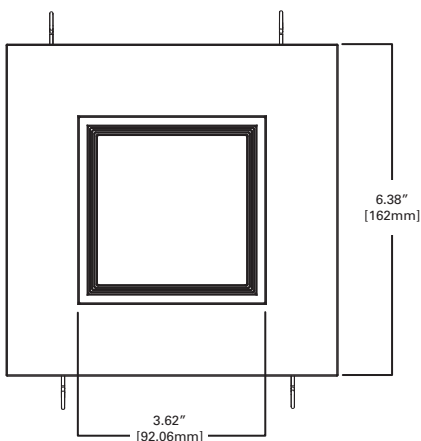


RSQ5TRMSNB  
Satin Nickel



RSQ5TRMTBZB  
Tuscan Bronze





#### ENERGY DATA

Lumens	800 Series	Inrush (A)	0.69 A @ 14mS
Input Voltage	120V	THD	≤ 20%
Input Current	82 (mA)	PF	≥ 0.90
Input Power	9.8 (W)	T Ambient	-40° - +40°C
Efficiency	84.5 (LPW)	Sound Rating	≤ 21dba



*air* **181e**



Refer to ENERGY STAR® Certified Products List. Can be used to comply with California Title 24 High Efficacy requirements. Certified to California Appliance Efficiency Database under JA8.



- Up to 800 lumens
- 90 CRI: 2700K, 3000K, 3500K, 4000K CCT
- Field selectable 2700K - 5000K<sup>1</sup>
- 9.8W, 120V
- L70 @ 70,000 hrs
- HALO matte white finish; alternate trim finishes available
- Torsion springs pre-installed
- Optional friction blades for installation
- Compatible with most 6" recessed housings
- Dimmable to 5% with select dimmers
- Damp and wet location listed (shower rated)
- Rated for IC, ICAT and may be used in Non-IC housings
- AIR-TITE™ certified per ASTM-E283
- Five-year limited warranty

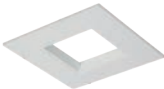
Ordering Information

SAMPLE NUMBER: RSQ6089301EMWWB

Models	Lumens	CRI / CCT
RSQ6 = 6" all- purpose square LED module	08=800 lumen (nominal)	927=90 CRI (min), 2700K CCT 930=90 CRI (min), 3000K CCT 935=90 CRI (min), 3500K CCT 940=90 CRI (min), 4000K CCT 9FS=90 CRI minimum, field selectable 2700, 3000, 3500, 4000 or 5000 K CCT <sup>1</sup>
Driver	Finish	Accessories
1E= 120V 60Hz, LE & TE phase cut 5% dimming	MWWB= matte white flange and baffle	RSQ6TRMMW = 6" square trim, matte white flange and splay, field paintable RSQ6TRMSNB = 6" square trim, satin nickel flange and baffle RSQ6TRMTBZB = 6" square trim, tuscon bronze flange and baffle

1. Coming soon.

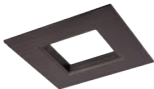
RSQ6 Designer Trims (Order Separately)



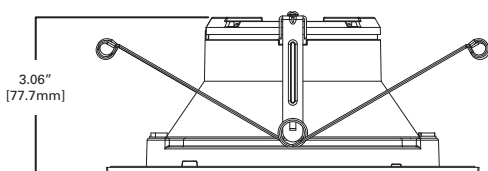
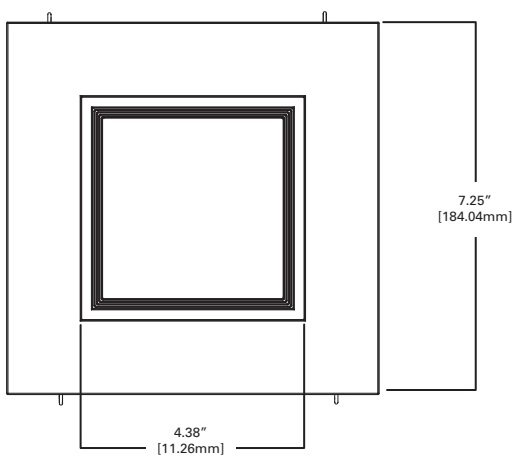
RSQ6TRMMW  
White (Paintable)



RSQ6TRMSNB  
Satin Nickel



RSQ6TRMTBZB  
Tuscan Bronze



ENERGY DATA			
Lumens	800 Series	Inrush (A)	0.69 A @ 14mS
Input Voltage	120V	THD	≤ 20%
Input Current	82 (mA)	PF	≥ 0.90
Input Power	9.8 (W)	T Ambient	-40° - +40°C
Efficiency	84.5 (LPW)	Sound Rating	≤ 21dba



*air*184e™  
LED

*Showerlight*

Refer to ENERGY STAR® Certified Products List. Can be used to comply with California Title 24 High Efficacy requirements. Certified to California Appliance Efficiency Database under JA8.

# RSQ4 Housing Compatibility

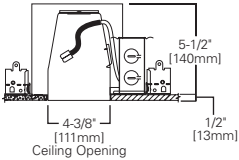
RSQ4 are rated for installation in 4" HALO and other housings.

<b>HALO LED<sup>1</sup></b>	H245ICAT, H245RICAT, H995ICAT, H995RICAT
<b>HALO</b>	H99TAT, H99RTAT, H99ICAT, E4TATSB, E4RTATSB, E4ICATSB
<b>Other Brands</b>	The RSQ4 is UL Certified for use with any 4" diameter recessed housing constructed of steel or aluminum with an internal volume that exceeds 52.9 in <sup>3</sup> in addition to those noted above.

1 HALO LED housings are non-screw base, high-efficacy code compliant.

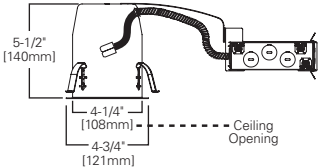
## H995ICAT

4" LED, IC, AIR-TITE,  
New Construction Housing



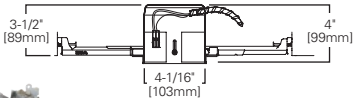
## H995RICAT

4" LED, IC, AIR-TITE,  
Remodel Housing



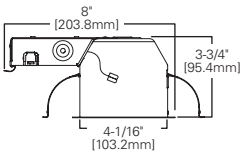
## H245ICAT

4" LED, Ultra-shallow, IC, AIR-TITE, New Construction Housing



## H245RICAT

4" LED, Ultra-shallow, IC, AIR-TITE, Remodel Housing



# RSQ5 Housing Compatibility

**RSQ5 are rated for installation in 5" HALO and other housings.**

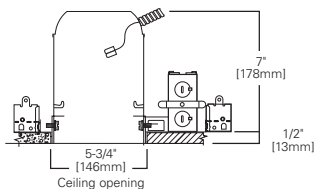
<b>HALO 5" LED<sup>1</sup></b>	H550ICAT, H550RICAT, E550ICAT, E550RICAT
<b>HALO 5"</b>	E5ICAT, E5RICAT, E5RTAT, E5TAT, E5TATNB, H25ICAT, H25ICATNB, H5ICAT, H5ICATNB, H5RICAT, H5RT, H5T, H5TNB
<b>Other Brands*</b>	The RSQ5 is UL Certified for use with any 5" diameter recessed housing constructed of steel or aluminum with an internal volume that exceeds 97.4 in <sup>3</sup> in addition to those noted above.

\*When using RSQ5 torsion springs for retrofit some housings will not have torsion spring receiver brackets –use HALO ML7RAB retrofit adapter band (order separately)

1 HALO LED housings are non-screw base, high-efficacy code compliant.

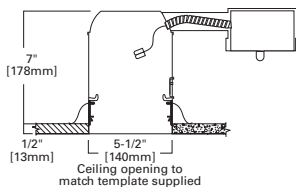
## H550ICAT

5" LED, IC, AIR-TITE, Standard New Construction Housing



## H550RICAT

5" LED, IC, AIR-TITE, Standard Remodel Housing



# RSQ6 Housing Compatibility

RSQ6 are rated for installation in 6" HALO and other housings.

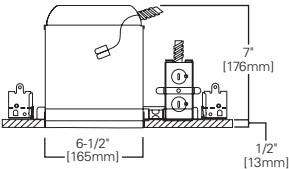
HALO 6" LED <sup>1</sup>	H750ICAT, H750RICAT, H750T, H750TCP, H2750ICAT, H2750RICAT, E750ICAT, E750RICAT
HALO 6"	H7ICAT, H7RICAT, H7ICT, H7RICT, H7ICATNB, H7ICTNB, H7T, H7RT, H7TNB, H7TCP, H7UICAT, H7UICATNB, H27ICAT, H27RICAT, H27T, H27RT, E7ICAT, E7RICAT, E27ICAT, E27RICAT, E7ICATNB, E7TAT, E7RTAT, E7TATNB, E27TAT, E27RTAT
Other Brands*	The RSQ6 is UL Certified for use with any 6" diameter recessed housing constructed of steel or aluminum with an internal volume that exceeds 112.2 in³ in addition to those noted above.

\*When using RSQ6 torsion springs for retrofit some housings will not have torsion spring receiver brackets –use HALO ML7RAB retrofit adapter band (order separately)

1 HALO LED housings are non-screw base, high-efficacy code compliant.

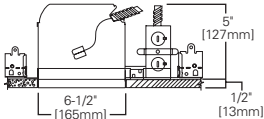
## H750ICAT

6" LED, IC, AIR-TITE, Standard New Construction Housing



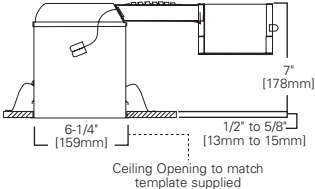
## H2750ICAT

6" LED, IC, AIR-TITE, Shallow New Construction Housing



## H750RICAT

6" LED, IC, AIR-TITE, Standard Remodel Housing





# Product and Photometric Data

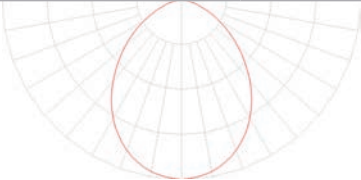
## RSQ4

4-inch square LED downlight



	CCT	Lumens	Power (W)	LPW
RSQ4	2700K	807	9.2	88.0
	3000K	814	9.2	88.9
	3500K	825	9.3	89.1
	4000K	835	9.1	91.8

RSQ4089301EMWWB		
Luminaire lumens		814
Input watts		9.2
LER (LPW)		88.9
Spacing Criteria	0-180	1.16
	90-270	1.16
	Diagonal	1.26
Beam angle (degrees)		90.2
Field angle (degrees)		143.1
Zonal lumen	Lumens	% Lumens
0-30	282	34.7
0-40	446	54.8
0-60	712	87.5
0-90	814	100



Color Metric Summary-3000K	
TM-30-15	Rf = 91
	Rg = 98
CRI/CIE	Ra = 92
	R9 = 63

CCT - Range of 2700K- 5000K



\*Additional photometric ies files available online.



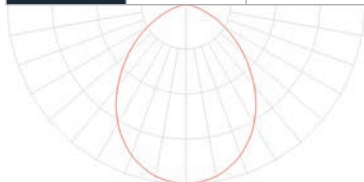
## RSQ5

5-inch square LED downlight



	CCT	Lumens	Power (W)	LPW
RSQ5	2700K	813	9.4	86.1
	3000K	837	9.4	88.7
	3500K	828	9.4	88.4
	4000K	840	9.4	89.2

RSQ5089301EMWWB		
Luminaire lumens		837
Input watts		9.4
LER (LPW)		88.7
Spacing Criteria	0-180	1.14
	90-270	1.14
	Diagonal	1.24
Beam angle (degrees)		89.1
Field angle (degrees)		143.1
Zonal lumen	Lumens	% Lumens
0-30	293	35
0-40	460	55
0-60	731	87.4
0-90	836	100



Color Metric Summary-3000K	
TM-30-15	Rf = 90.9
	Rg = 100.7
CRI/CIE	Ra = 94.1
	R9 = 68.4

CCT - Range of 2700K- 5000K



\*Additional photometric ies files available online.

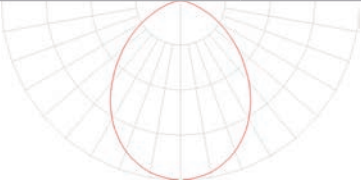
# Product and Photometric Data



**RSQ6**  
6-inch square LED downlight

	CCT	Lumens	Power (W)	LPW
RSQ6	2700K	835	9.4	88.6
	3000K	844	9.3	90.4
	3500K	835	9.4	89.2
	4000K	845	9.3	90.5

RSQ6089301EMWWB		
Luminaire lumens		844
Input watts		9.3
LER (LPW)		90.4
Spacing Criteria	0-180	1.16
	90-270	1.16
	Diagonal	1.26
Beam angle (degrees)		90.8
Field angle (degrees)		144.1
Zonal lumen	Lumens	% Lumens
0-30	290	34.4
0-40	458	54.3
0-60	734	86.9
0-90	844	100



Color Metric Summary-3000K	
TM-30-15	Rf = 91
	Rg = 99
CRI/CIE	Ra = 93
	R9 = 68

CCT - Range of 2700K- 5000K



\*Additional photometric ies files available online.

## HALOHOME™



### HALO Home In-wall Smart Dimmer

HIWMA1BLE40AWH

Controls standard lighting fixtures with dimmer or HALO Home mobile app.

Features include:

- ON/OFF
- Dim
- Group
- Scene
- Schedule



## Cooper Lighting Solutions

1121 Highway 74 South  
Peachtree City, GA 30269  
P: 770-486-4800  
[www.cooperlighting.com](http://www.cooperlighting.com)

Canada Sales  
5925 McLaughlin Road  
Mississauga, Ontario L5R 1B8  
P: 905-501-3000  
F: 905-501-3172

## Lighting Product Lines

Ametrix  
AtLite  
Corelite  
Ephesus  
Fail-Safe  
HALO  
HALO Commercial  
Invue  
io  
IRiS  
Lumark  
Lumière  
McGraw-Edison  
Metalux  
MWS  
Neo-Ray  
Portfolio  
RSA  
Shaper  
Streetworks  
Sure-Lites

## Controls Product Lines

Greengate

## Connected Lighting Systems

Fifth Light (Canada Only)  
HALO Home  
WaveLinx

## IoT Platform

Trellix



© 2021 Cooper Lighting Solutions  
All Rights Reserved  
Printed in USA  
Publication No. BR518054EN  
March 2020

Products, specifications and  
compliances are subject to  
change without notice.

Cooper Lighting Solutions is a  
registered trademark.  
All other trademarks are property  
of their respective owners.

