



# HALO Commercial

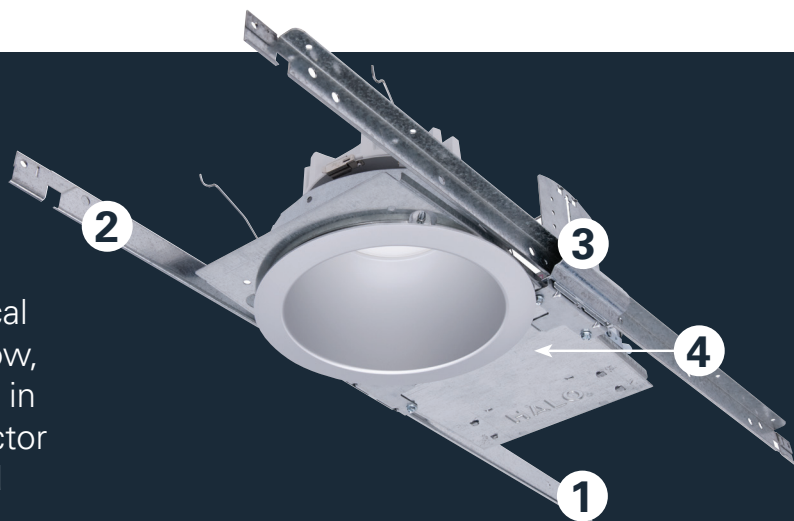
HC6

6-inch LED Downlight & Wall Wash

# HC6

## 6-inch LED Downlight and Wall Wash

Versatile 6-inch commercial downlight optimized for lumen efficiency and optical performance. Reflectors offered in narrow, medium, wide distribution for efficiency in lumen delivery. Value priced and contractor installation friendly with emergency and connected lighting options available.



### Standard Features

#### 1. Housing Mounting Frame

- a. 6" Boat-shaped galvanized steel frames with die-formed aperture
- b. New construction or remodeling installation with boat shaped frame
- c. Plaster lip collar pre-set to 1/2" and adjusts for ceilings up to 1-1/2" thick

#### 2. No Fuss Bar Hangers

- a. Pre-installed and centered mounting bars
- b. Bars lock to tee grid with screwdriver or pliers
- c. Centering marks on the bar bracket

#### 3. Adjustable Mounting Brackets

- a. Bar brackets adjust 2" vertically from above the ceiling or through the aperture
- b. Brackets for use with the included "No Fuss" mounting bars or with 1/2" EMT
- c. Brackets are removable for remodel installation from below the ceiling

#### 4. Junction Box

- a. Listed for (8) #12 AWG 90° C conductors (4-in/4-out)
- b. Listed for feed through branch wiring
- c. (3) 1/2" and (2) 3/4" trade size pry-outs
- d. Low voltage barrier section for 0-10V dimming wires
- e. (3) 4-port push wire nuts (1-port is fixture connection)

### LED Modules



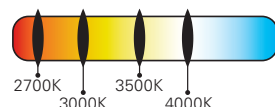
**HM6 Low Lumen LED Module**  
For 1000, 1500, and 2000 lumen housings (mounting frames)



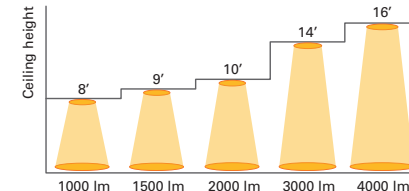
**HM6 High Lumen LED Module**  
For 3000 and 4000 lumen housings (mounting frames)

The HC6 LED modules are available in a discrete selection of correlated color temperatures (CCT). The user can choose color temperatures 2700K, 3000K, 3500K and 4000K in 80 or 90 CRI.

#### Color temperature options



#### Lumen options



*Nominal values for 15 - 20 footcandles at nadir.*

### Reflectors



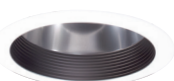
Specular Clear



Semi-Specular (Haze)



White Baffle



Black Baffle



Black Baffle with Black Flange



White



Wall Wash



White Polymer (Dead Front)

#### Nominal beam distribution options\*



narrow  
55°



medium  
60°



wide  
65°

Beam Distribution*			
Code	Distribution	Spacing Criteria	Beam Angle
ND	Narrow	0.97	55°
MD	Medium	1.10	60°
WD	Wide	1.28	65°

\* Nominal values may vary depending on selected CRI/CCT and reflector finish.



# Connected Systems

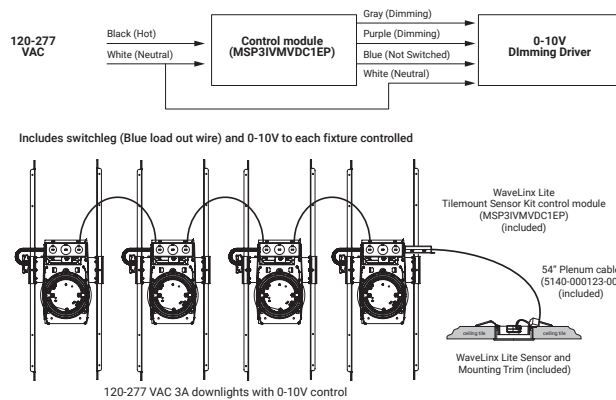


## WaveLinX Lite - WTK Tilemount Sensor

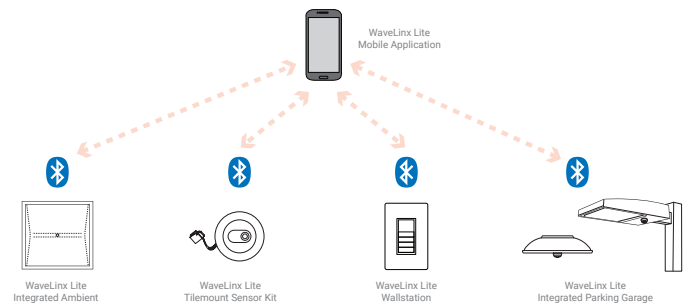
- Intuitive Android™ or Apple® iOS® app for basic system code compliant set up and configuration via Bluetooth
- Up to 28 unique areas per project site (WaveLinX Lite Bluetooth network)
- Up to 50 devices for an area, any one of 16 control zones, up to 6 occupancy sets, and custom lighting scenes
- Automatic occupancy or vacancy, sensor sensitivity, daylight dimming, etc. configurable through the app
- Refer to the WaveLinX system specifications for details



### WaveLinX Lite WTK Tilemount Wiring Diagram



### WaveLinX Lite Bluetooth Enabled System



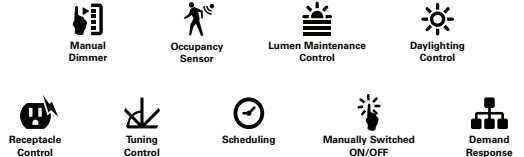
## WaveLinX Wireless – WTA Tilemount Sensor



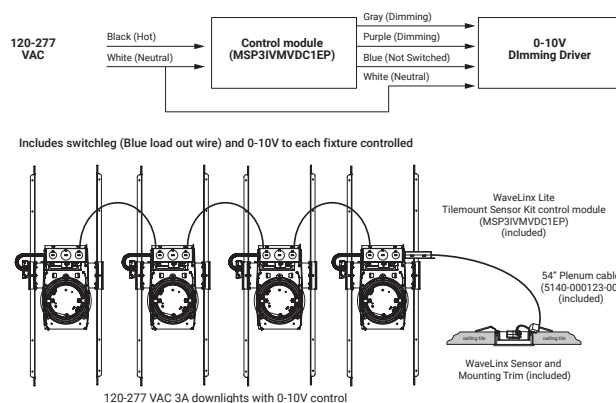
- WaveLinX Wireless functionality configures zones and customizes settings from one secure mobile app
- Automatic code commissioning that meets the strictest codes
- Fixtures and sensors integrate with Wireless Area Controller, Wall Stations, and Control Devices
- Stand-Alone Offices or Entire Building Network Installations



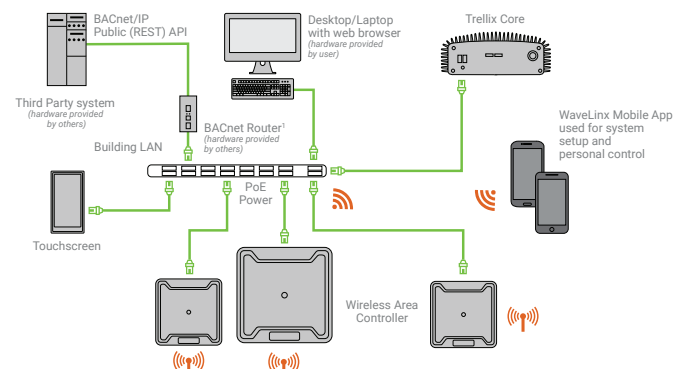
### WaveLinX mobile app settings

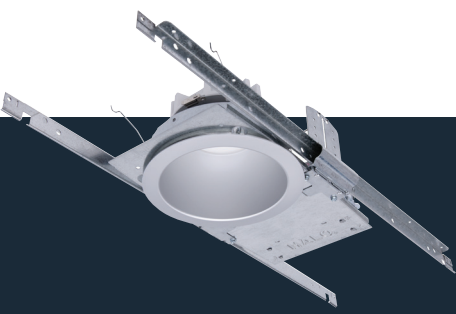


### WaveLinX Lite WTA Tilemount Wiring Diagram



### WaveLinX Wireless Trellix Building Management Integration





# 6" HC6 LED Downlight & Wall Wash

6-inch aperture LED downlight offered in narrow, medium, wide, and wall wash distributions ideal for general area lighting. Lumen options range from 1000 to 4000 lumens in color temperatures of 2700K, 3000K, 3500K, and 4000K; in 80 or 90CRI. Luminaire is airtight and can be installed in new construction or below the finished ceiling in remodeling applications. Intended for office spaces, healthcare, hospitality, and institutional uses.

**Sample Number:** HC620D010REM7 - HM612835 - 61MDC

A complete luminaire consists of a mounting frame, LED module, and reflector (order separately)

Mounting Frame	Lumens	Driver	Options <sup>1</sup>
<b>HC6</b> = 6" new construction and remodeler frame  <b>HC6CP</b> = 6" new construction and remodeler housing, CCEA Chicago Plenum rated	<b>Fixed, Factory Set</b> <b>10</b> = 1000 lumens (nominal), use with HM612 module <b>15</b> = 1500 lumens (nominal), use with HM612 module <b>20</b> = 2000 lumens (nominal), use with HM612 module <b>30</b> = 3000 lumens (nominal), use with HM634 module <b>40</b> = 4000 lumens (nominal), use with HM634 module	<b>D010</b> =120-277VAC 50/60Hz 0-10V analog 1% - 100% dimming <b>D010347</b> = 347VAC 50/60Hz 0-10V analog 1%-100% dimming (Canada only) 1  <b>DLV</b> =distributed low voltage dimming (1%-100%) driver <sup>1</sup> For use with DLVP system only. Refer to DLVP system specifications for details.	<b>REM7</b> = 7 watt emergency module with remote test / indicator light, use with D010 only <b>REM14</b> = 14 watt emergency module with remote test / indicator light, use with D010 only <b>IEM7</b> = integral 7 watt emergency module with integral test / indicator light, use with D010 only <b>IEM14</b> = integral 14 watt emergency module with integral test / indicator light, use with D010 only <b>BOD7ST</b> = 7.5 watt Bodine self-test diagnostic emergency module with remote test / indicator light, use with D010 only <b>WTA</b> =Factory installed WaveLinX tile mount sensor Kit <sup>5</sup> <b>WTK</b> = Factory installed WaveLinX Lite Sensor Kit <sup>6</sup>  <b>REM7V</b> = 7 watt emergency module with remote test / indicator light, use with DLV only <sup>2</sup> <b>REM14V</b> = 14 watt emergency module with remote test / indicator light, use with DLV only <sup>2</sup> <b>IEM7V</b> = integral 7 watt emergency module with integral test / indicator light, use with DLV only <sup>2</sup> <b>IEM14V</b> = integral 14 watt emergency module with integral test / indicator light, use with DLV only <sup>2</sup>

LED Module	Lumens	CRI/CCT	Accessories
<b>HM6</b> = 6" LED module  Use with 61 & 61PS series reflectors. Compatible with HC6 frames only.	<b>12</b> =1000, 1500, 2000 lumens (nominal). For use with HC610*, HC615*, HC620* frames. <b>34</b> =3000, 4000 lumens (nominal). For use with HC630* and HC640* frames.	<b>827</b> =80CRI / 2700K <b>830</b> =80CRI / 3000K <b>835</b> =80CRI / 3500K <b>840</b> =80CRI / 4000K <b>927</b> =90CRI / 2700K <b>930</b> =90CRI / 3000K <b>935</b> =90CRI / 3500K <b>940</b> =90CRI / 4000K	<b>HB128APK</b> = L channel hanger bar, 26", pair (replacement) <b>RMB22</b> = Adjustable wood joist mounting bars, pair, extend to 22" long <b>HSA6</b> =Slope Adapter for 6" Aperture Housings, Specify Slope (refer to instructions for installation of housing and trim) <b>H347</b> = 347 to 120V step down transformer, 75VA <b>H347200</b> = 347 to 120V step down transformer, 200VA <b>WTA</b> =Field installed WaveLinX tile mount sensor Kit <sup>1,5</sup> <b>WTK</b> = Field installed WaveLinX Lite Sensor Kit <sup>1,6</sup>

## Notes:

1. Not available with CP version

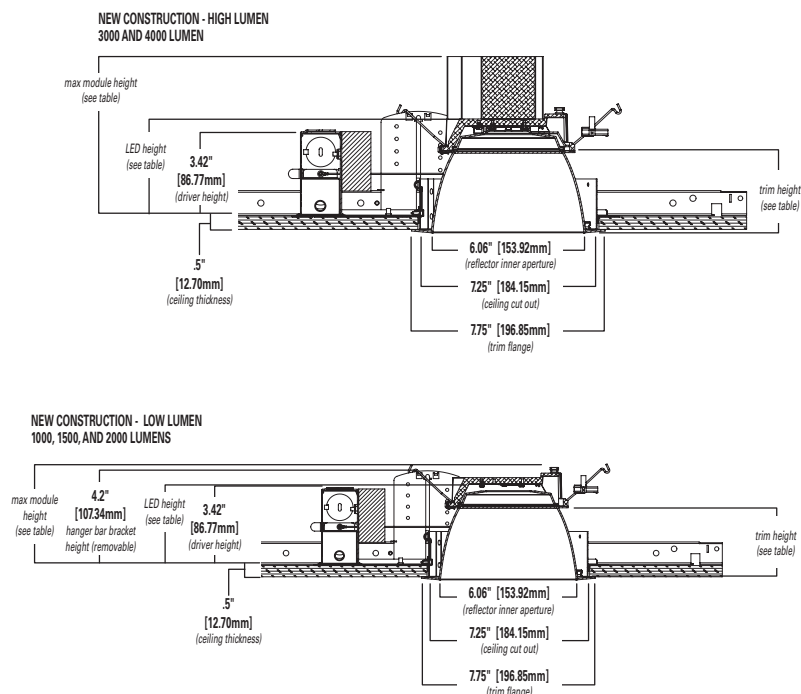
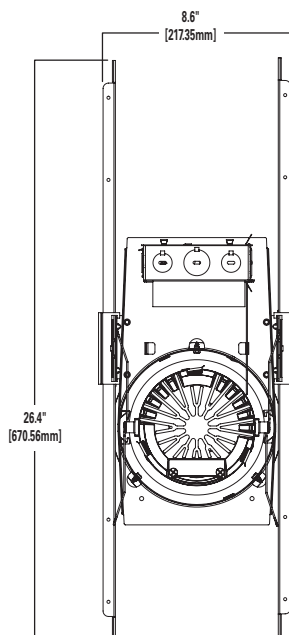
2. ULus for U.S. only

5. WTA = WaveLinX tile mount sensor kit for daylight dimming, PIR motion sensing, and optional RLTS - RealTime Location Services, use with D010 only

(Refer to WaveLinX system specifications)

6. WTK = WaveLinX Lite tile mount sensor kit for daylight dimming, PIR motion sensing, use with D010 only (Refer to WaveLinX Lite system specifications)

## Dimensions - HC6 Series





Precision formed 6-inch reflectors designed to deliver narrow, medium and wide beam distributions. A non-conductive polymer reflector may be used to meet 'dead-front' requirements.

Reflector	Beam Distribution <sup>3</sup>	Finish	Flange	Accessories
<b>61</b> = 6" conical reflector	<b>ND</b> = narrow 55° beam angle, 0.97 SC <b>MD</b> = medium 60° beam angle, 1.10 SC <b>WD</b> = wide 65° beam angle, 1.28 SC <b>RWW</b> = rotatable wall wash with linear spread lens	<b>C</b> = Specular clear <b>H</b> = Semi-specular clear (haze) <b>W</b> = Matte white (white flange)	<b>Blank</b> = Polished flange standard, C, H reflectors <b>Blank</b> = White flange standard, W reflectors <b>WF</b> = White flange option for C & H reflectors	<b>61RWWPK</b> = rotatable wall wash insert for 6" reflector, replacement part kit

Baffle	Beam Distribution <sup>3</sup>	Finish	Flange	Accessories
<b>61</b> = 6" baffle reflector	<b>WD</b> = wide 65° beam angle, 1.28 SC (nominal) <b>RWW</b> = rotatable wall wash with linear spread lens	<b>BB</b> =black baffle (white flange) <b>WB</b> =white baffle (white flange)	<b>Blank</b> = White flange standard, BB & WB <b>BF</b> = Black flange option available with BB	<b>61RWWPK</b> = rotatable wall wash insert for 6" reflector, replacement part kit

IEM Reflector	Beam Distribution <sup>3</sup>	Finish	Flange	Integral Emergency
<b>61</b> = 6" IEM reflector for integral emergency only	<b>ND</b> = narrow 55° beam angle, 0.97 SC <b>MD</b> = medium 60° beam angle, 1.10 SC <b>WD</b> = wide 65° beam angle, 1.28 SC	<b>C</b> = Specular clear <b>H</b> = Semi-specular clear (haze) <b>W</b> = Matte white (white flange)	<b>Blank</b> = Polished flange standard, C, H reflectors <b>Blank</b> = White flange standard, W reflectors <b>WF</b> = White flange option for C & H reflectors	<b>IEM</b> = Reflector for integral emergency only

IEM Baffle	Beam Distribution <sup>3</sup>	Finish	Flange	Integral Emergency
<b>61</b> = 6" IEM baffle for integral emergency only	<b>WD</b> = wide 65° beam angle, 1.28 SC (nominal)	<b>BB</b> =black baffle (white flange) <b>WB</b> =white baffle (white flange)	<b>Blank</b> = White flange standard, BB & WB <b>BF</b> = Black flange option available with BB	<b>IEM</b> = Reflector for integral emergency only

Reflector	Beam Distribution <sup>3</sup>	Finish	Flange	
<b>61PS</b> = 6" non-conductive polymer 'dead-front' conical reflector <sup>4</sup>	<b>MD</b> = medium 60° beam angle, 1.10 SC (nominal)	<b>W</b> = Matte white (white flange)	<b>Blank</b> = White flange on W reflector	

<sup>3</sup>. Values are nominal with specular clear reflector, other finishes and field results may vary. <sup>4</sup>. 61PS reflector only available in Non-IC environments only, and up to 3000 lumens only.

## Energy Data - HC6 Series

Nominal Lumens Model Number	1000 lumen HC610		1500 lumen HC615		2000 lumen HC620		3000 lumen HC630		4000 lumen HC640	
LED Module	Low Lumen Module		Low Lumen Module		Low Lumen Module		High Lumen Module		High Lumen Module	
Input Voltage 120-277VAC	120V	277V	120V	277V	120V	277V	120V	277V	120V	277V
Current (A)	0.085	0.042	0.119	0.055	0.176	0.082	0.228	0.102	0.345	0.15
Power (W)	10.1	10.9	14.2	14.9	21.1	21.4	27.2	27	41.3	40.7
In-rush (A)	0.644	1.95	0.212	0.85	0.588	0.624	0.898	1.7	1.05	2.23
In-rush Duration (ms)	0.125	0.24	0.28	0.32	0.3	0.38	0.36	0.38	0.32	0.34
THD (%)	8.6	15.6	7.8	16.3	8.8	11.2	9.7	9.3	10.06	14.01
PF ≥	≥ 0.90									
Minimum starting temperature	-40 C (-40 F)									

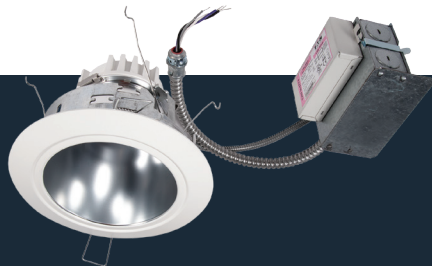
### High Lumen (3000 & 4000 Lumens)

Distribution	Max. Module Height	Trim Height	LED Height
Narrow	6.6"	3.4"	3.8"
Medium	6.7"	3.5"	3.9"
Wide	6.5"	3.3"	3.7"
Baffle	6.5"	3.3"	3.7"

### Low Lumen (1000, 1500 & 2000 Lumens)\*

Max. Module Height	Trim Height	LED Height
4.5"	3.4"	3.8"
4.6"	3.5"	3.9"
4.4"	3.3"	3.7"
4.4"	3.3"	3.7"

\*Max. height w/hanger bar bracket 4.2"



# 6" HC6R LED Retrofit Downlight

6-inch aperture LED retrofit downlight is designed for installation into other **6.625" (6-5/8") to 7.0" (7")** nominal aperture commercial housings. The retrofit reflector offered in medium distribution is ideal for general area lighting. Lumen packages range 1000 to 4000 lumens (nominal) in color temperatures of 2700K, 3000K, 3500K, and 4000K; in 80 or 90CRI. Installs from below the ceiling into existing open frame recessed housings. Applications include office spaces, healthcare, hospitality, and other institutional uses.

**Sample Number:** HC6R20D010 – HM6R12835 – 62RMDC

A complete luminaire consists of a mounting frame, LED module, and reflector (order separately)

Mounting Frame	Lumens	Driver	Options
<b>HC6R</b> = 6" retrofit kit for 6.625" (6-5/8") to 7.0" (7") nominal ceiling cutout aperture existing open frame commercial housings	<b>Fixed, Factory Set</b> <b>10</b> = 1000 lumens (nominal), use with HM412 module <b>15</b> = 1500 lumens (nominal), use with HM412 module <b>20</b> = 2000 lumens (nominal), use with HM412 module <b>30</b> = 3000 lumens (nominal), use with HM434 module <b>40</b> = 4000 lumens (nominal), use with HM434 module	<b>D010</b> =120-277VAC 50/60Hz 0-10V analog 1% - 100% dimming <b>D010347</b> = 347VAC 50/60Hz 0-10V analog 1%-100% dimming (Canada only)	<b>REM7</b> = integral 7 watt emergency module with remote test / indicator light, for use with D010 only <b>REM14</b> = integral 14 watt emergency module with remote test / indicator light, for use with D010 only <b>BOD7ST</b> = 75 watt Bodine self-test diagnostic emergency module with remote test / indicator light, use with D010 only <b>WTA</b> =Factory installed WaveLinX sensor Kit <sup>1</sup> <b>WTK</b> = Factory installed WaveLinX Lite Sensor Kit <sup>2</sup>

LED Module	Lumens	CRI/CCT	Accessories
<b>HM6R</b> = 6" retrofit module for use for use HC6R and HC56R series retrofit kits and 62R trims only	<b>12</b> =1000, 1500, 2000 lumens (nominal) Use with HC6R10*, HC6R15*, HC6R20*, HC56R10*, HC56R15*, HC56R20* mounting frames, and 62R trims only <b>34</b> =3000, 4000 (nominal) For use with HC6R30*, HC6R40*, HC56R30*, HC56R40* mounting frames, and 62R trims only	<b>827</b> =80CRI / 2700K <b>830</b> =80CRI / 3000K <b>835</b> =80CRI / 3500K <b>840</b> =80CRI / 4000K <b>927</b> =90CRI / 2700K <b>930</b> =90CRI / 3000K <b>935</b> =90CRI / 3500K <b>940</b> =90CRI / 4000K	<b>H347</b> = 347 to 120V step down transformer, 75VA <b>H347200</b> = 347 to 120V step down transformer, 200VA sensor kit, for use with D010 driver only <b>WTA</b> = Field installed WaveLinX sensor Kit <sup>1</sup> <b>WTK</b> = Field installed WaveLinX Lite Sensor Kit <sup>2</sup>

Reflector	Beam Distribution	Finish	Flange
<b>62R</b> = 6" retrofit conical reflector for use HC6R and HC56R series retrofit kits only	<b>MD</b> = medium 55° beam angle, 1.04 SC	<b>C</b> = Specular clear <b>H</b> = Semi-specular clear (haze) <b>W</b> = Matte white (white flange)	<b>Blank</b> = Polished flange on C, H reflectors <b>Blank</b> = White flange on W reflectors <b>WF</b> = White flange option for C & H reflectors

## Notes:

1. WTA = WaveLinX tile mount sensor kit for daylight dimming, PIR motion sensing, and optional RLTS - RealTime Location Services, use with D010 only (Refer to WaveLinX system specifications)
2. WTK = WaveLinX Lite tile mount sensor kit for daylight dimming, PIR motion sensing, use with D010 only (Refer to WaveLinX Lite system specifications)

## Retrofit Reflectors



Specular Clear



Semi-Specular (Haze)



Matte White



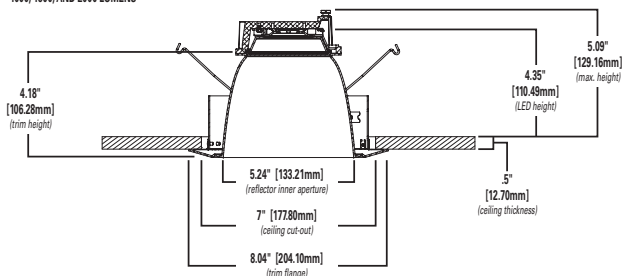
Specular Clear  
with White Flange



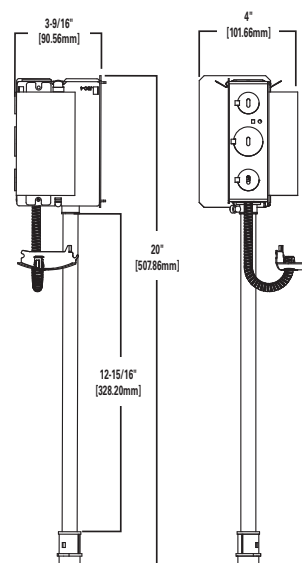
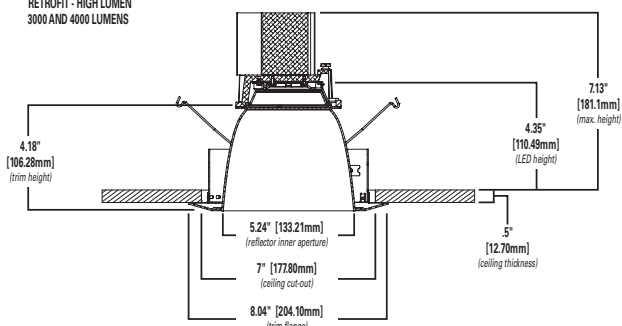
Semi-Specular (Haze)  
with White Flange

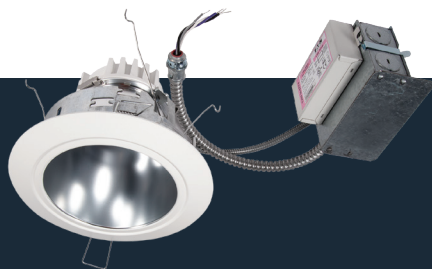
## Dimensions - HC6R Series

RETROFIT - LOW LUMEN  
1000, 1500, AND 2000 LUMENS



RETROFIT - HIGH LUMEN  
3000 AND 4000 LUMENS





# 6" HC56R LED Retrofit Downlight

6-inch aperture LED retrofit downlight is designed for installation into other **5.875" (5-7/8") to 6.625" (6-5/8")** nominal aperture commercial housings. The retrofit reflector offered in medium distribution is ideal for general area lighting. Lumen packages range 1000 to 4000 lumens (nominal) in color temperatures of 2700K, 3000K, 3500K, and 4000K; in 80 or 90CRI. Installs from below the ceiling into existing open frame recessed housings. Applications include office spaces, healthcare, hospitality, and other institutional uses.

**Sample Number:** HC6R20D010 – HM6R12835 – 62RMDC

A complete luminaire consists of a mounting frame, LED module, and reflector (order separately)

Mounting Frame	Lumens	Driver	Options
<b>HC56R</b> = 6" retrofit kit for 5.875" (5-7/8") to 6.625" (6-5/8") nominal ceiling cutout aperture existing open frame commercial housings	<b>Fixed, Factory Set</b> <b>10</b> = 1000 lumens (nominal), use with HM412 module <b>15</b> = 1500 lumens (nominal), use with HM412 module <b>20</b> = 2000 lumens (nominal), use with HM412 module <b>30</b> = 3000 lumens (nominal), use with HM434 module <b>40</b> = 4000 lumens (nominal), use with HM434 module	<b>D010</b> =120-277VAC, 50/60Hz, 0-10V 1% -100% dimming	<b>REM7</b> = integral 7 watt emergency module with remote test / indicator light, for use with D010 only <b>REM14</b> = integral 14 watt emergency module with remote test / indicator light, for use with D010 only <b>BOD7ST</b> = 7.5 watt Bodine self-test diagnostic emergency module with remote test / indicator light, use with D010 only <b>WTA</b> =Factory installed WaveLinX sensor Kit <sup>1</sup> <b>WTK</b> = Factory installed WaveLinX Lite Sensor Kit <sup>2</sup>

LED Module	Lumens	CRI/CCT	Accessories
<b>HM6R</b> = 6" retrofit module for use for use HC6R and HC56R series retrofit kits and 62R trims only	<b>12</b> =1000, 1500, 2000 lumens (nominal) Use with HC6R10*, HC6R15*, HC6R20*, HC56R10*, HC56R15*, HC56R20* mounting frames, and 62R trims only <b>34</b> =3000, 4000 (nominal) For use with HC6R30*, HC6R40*, HC56R30*, HC56R40* mounting frames, and 62R trims only	<b>827</b> =80CRI / 2700K <b>830</b> =80CRI / 3000K <b>835</b> =80CRI / 3500K <b>840</b> =80CRI / 4000K <b>927</b> =90CRI / 2700K <b>930</b> =90CRI / 3000K <b>935</b> =90CRI / 3500K <b>940</b> =90CRI / 4000K	<b>H347</b> = 347 to 120V step down transformer, 75VA <b>H347200</b> = 347 to 120V step down transformer, 200VA sensor kit, for use with D010 driver only <b>WTA</b> = Field installed WaveLinX sensor Kit <sup>1</sup> <b>WTK</b> = Field installed WaveLinX Lite Sensor Kit <sup>2</sup> <b>HL6RSMF</b> = 6" aperture new construction mounting frame with integral wood & T-grid bar hangers, adjust for 8" to 24" wide

Reflector	Beam Distribution	Finish	Flange
<b>62R</b> = 6" retrofit conical reflector for use HC6R and HC56R series retrofit kits only	<b>MD</b> = medium 55° beam angle, 1.04 SC	<b>C</b> = Specular clear <b>H</b> = Semi-specular clear (haze) <b>W</b> = Matte white (white flange)	<b>Blank</b> = Polished flange on C, H reflectors <b>Blank</b> = White flange on W reflectors <b>WF</b> = White flange option for C & H reflectors

## Notes:

1. WTA = WaveLinX tile mount sensor kit for daylight dimming, PIR motion sensing, and optional RLTS - RealTime Location Services, use with D010 only (Refer to WaveLinX system specifications)

2. WTK = WaveLinX Lite tile mount sensor kit for daylight dimming, PIR motion sensing, use with D010 only (Refer to WaveLinX Lite system specifications)

## Retrofit Reflectors



Specular Clear



Semi-Specular (Haze)



Matte White



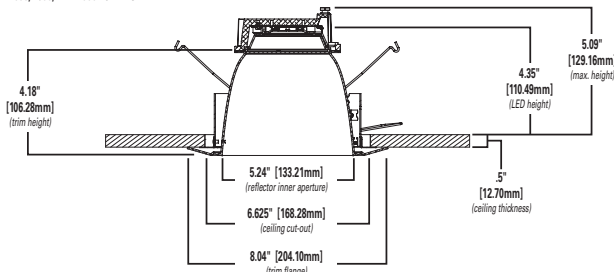
Specular Clear  
with White Flange



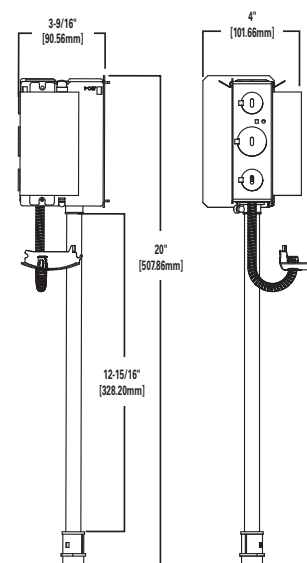
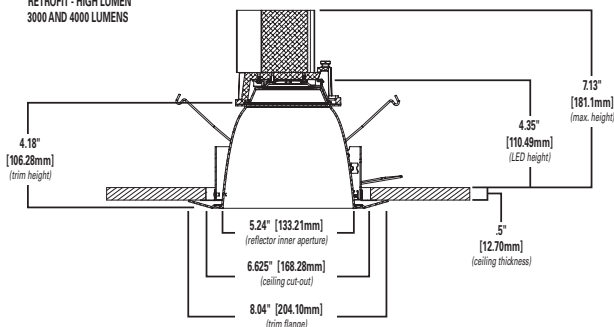
Semi-Specular (Haze)  
with White Flange

## Dimensions - HC56R Series

RETROFIT - LOW LUMEN  
1000, 1500, AND 2000 LUMENS



RETROFIT - HIGH LUMEN  
3000 AND 4000 LUMENS



### Lighting Product Lines

Ametrix  
AtLite  
Corelite  
Ephesus  
Fail-Safe  
HALO  
HALO Commercial  
Invue  
io  
IRiS  
Lumark  
Lumière  
McGraw-Edison  
Metalux  
MWS  
Neo-Ray  
Portfolio  
RSA  
Shaper  
Streetworks  
Sure-Lites

### Controls Product Lines

Greengate

### Connected Lighting Systems

Fifth Light (Canada Only)  
HALO Home  
WaveLinx

### IoT Platform

Trellix



**Cooper Lighting Solutions**  
1121 Highway 74 South  
Peachtree City, GA 30269  
P: 770-486-4800  
[www.cooperlighting.com](http://www.cooperlighting.com)

**Canada Sales**  
5925 McLaughlin Road  
Mississauga, Ontario L5R 1B8  
P: 905-501-3000  
F: 905-501-3172

© 2020 Cooper Lighting Solutions  
All Rights Reserved  
Printed in USA  
Publication No. BR517009EN  
April 13, 2021 3:53 PM



All other trademarks are property of their respective owners.

Product availability, specifications, and compliances are subject to change without notice.