

# Heavy Duty Safety Switch with Viewing Window

## Type VBII, 30 Amp, Type 12 Industrial & Type 4/4X Stainless Steel

### Standards and Ratings

- UL Listed under file #E4776
- Meets UL98 for switches and UL 50 for enclosures
- Meets NEMA Standard KS-1 for enclosed switches
- Meets NEC wire bending space requirements
- Rated 10,000 AIC with Class H fuses or 200,000 AIC with Class R and J fuses
- $I^2t$  rated (Amps<sup>2</sup> x Seconds = 50,000)
- 12X overload current rating exceeds 10X industry standard
- Suitable for use as service entrance equipment

### Features

- Quick-make and break switching action
- Double break visible blade design
- Highly visible ON/OFF indication
- Window permits viewing of both visible blades and indicating type fuses
- Rugged installer friendly enclosure design
- Modular design allows quick and easy replacement of parts
- Front removable lugs which can easily be converted to copper body or compression type lugs
- Defeatable dual cover interlock

### General Information

Catalog Number	Volts	Description	Shipping Weight (lbs.)
<b>Type 12 Industrial <sup>1</sup></b>			
HF361JW	600	3 Pole, 3 Wire, Fusible	17
HNF361JW	600	3 Pole, 3 Wire, Non-Fusible	14
<b>Type 4/4X Stainless Steel</b>			
HF361SW	600	3 Pole, 3 Wire, Fusible	17
HF361SSW <sup>6</sup>	600	3 Pole, 3 Wire, Fusible	17
HNF361SW	600	3 Pole, 3 Wire, Non-Fusible	15
HNF361SSW <sup>6</sup>	600	3 Pole, 3 Wire, Non-Fusible	15

### Horsepower Ratings <sup>2 3 4</sup> - 600 Volts

Catalog Number	3 Phase, 480V AC		3 Phase, 600V AC		250V DC
	Std	Max	Std	Max	
HF361JW	5	15	7½	20	—
HF361SW & HF361SSW	5	15	7½	20	—
HNF361JW	—	20 <sup>5</sup>	—	30	—
HNF361SW & HNF361SSW	—	20 <sup>5</sup>	—	30	—

### Mechanical Lug Wire Ranges (60/75°C, Cu/Al)

Description	Wire Range
Line, Load	#12-6 AWG (Al) or
Neutral	#14-6 AWG (Cu)
Ground	#14-4 AWG

<sup>1</sup> Also rated 3R/3S for outdoor use.

<sup>2</sup> Dual horsepower ratings: Std - applies when non-time delay fuses are installed. Max - applies when time-delay fuses are installed.

<sup>3</sup> Horsepower ratings listed also apply to Design E motors with no derating.

<sup>4</sup> Also rated 5HP at 250V DC.

<sup>5</sup> Also rated 10HP on 3 phase, 240V AC systems.

<sup>6</sup> The enclosure of catalog number HF361SSW and HNF361SSW is constructed from 316 grade stainless steel.

## Product Specification Sheet HD30.9

Answers for industry.

**SIEMENS**

# Product Specification Sheet #HD30.9 (page 2 of 2)

## Accessories

Catalog Number	Description
HA161234	One Normally Open and Closed Auxiliary Switches
HA261234	Two Normally Open and Closed Auxiliary Switches
HA361234	Low Voltage Auxiliary Switch
HG61234	Equipment Ground Lug Kit (Factory installed)
HG261234	Isolated Equipment Ground Lug Kit
HP61	Fuse Puller (3 per kit)
HN612	Neutral Kit
HR612	600 Volt Class R Fuse Clip Kit (3 fuse clips per kit)
HLC612	Copper Lug Kit (9 lugs per kit)
HCL612	Compression Lug Neutral Barrier Kit
SSH100	1.00" Type 12 and 4X Hub

## Replacement Parts

Catalog Number	Description
HFB612	Fusible Line Side Replacement Base (HF361JW, HF361SW)
HBB612	Fusible Load Side Replacement Base (HF361JW, HF361SW)
HNB612	Non-Fusible Line Side Replacement Base (HNF361JW, HNF361SW)
HH6123	Replacement Handle/Handle Guard (HH6123S for Type 4X)
HL612	Replacement Lug (3 lugs per kit)
HM6123	Replacement Mechanism (HM6123S for Type 4X)
1	Replacement Door

## Compression Lugs <sup>2</sup>

Wire Size	Burndy CU Only	CU/AL	Thomas-Betts CU Only	CU/AL	IlSCO CU Only	CU/AL
#14-10				60096 60097		
#8	YA8C-L BOX YA8C-L1 BOX		54104 54130	60101 60102 61102	CRA-8	ACL-8 ACN-8
#6				61107		

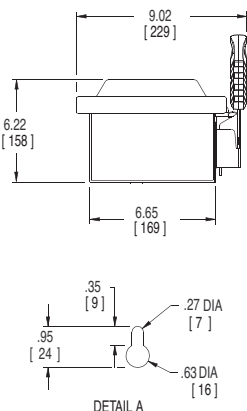
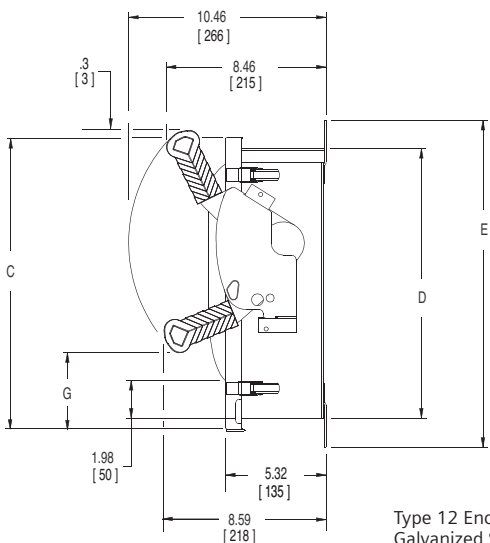
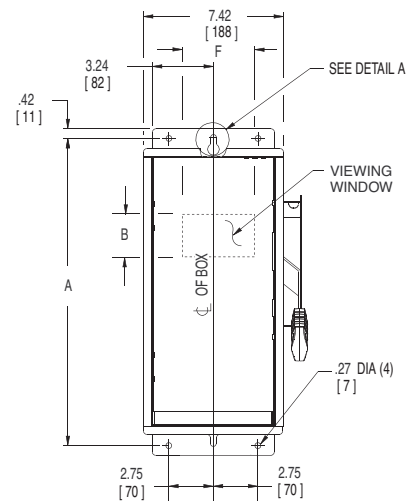
1 Place "DOOR" at the end of the switch catalog number.

2 If compression lugs are used for the neutral, order compression lug neutral barrier kit HCL612.

## Dimension Drawing

### Dimensions Inches (mm)

Cat. No.	A	B	C	D	E	F	G
HF361JW	16.46 (418)	3.00 (76)	15.45 (393)	14.27 (362)	17.31 (440)	3.53 (90)	4.07 (103)
HF361SW & HF361SSW							
HNF361JW	13.33 (338)	1.75 (44)	12.31 (313)	11.12 (282)	14.16 (360)	3.53 (90)	.92 (23)
HNF361SW & HNF361SSW							



No knockouts in the enclosure.  
Dimensions shown in inches and millimeters ( ).  
Dimension shown accurate to ± 1/16 inch.

	LINE SIDE WIRE BEND	LOAD SIDE WIRE BEND
600V	3.02 (77)	2.61 (66)

Type 12 Enclosure:  
Galvanized Steel  
.054 Thick (17 Gauge)  
Finish: ANSI Grey #61 Paint  
HF361SW & HNF361SSW  
Type 4X Enclosure: 304  
Stainless Steel  
.055 Thick (17 Gauge)

HF361SSW & HNF361SSW  
Type 4X Enclosure: 316  
Stainless Steel  
.055 Thick (17 Gauge)