

Adapter M12 socket, 4-pole, for M20 cable entry, for plastic enclosure



|   |  |
|---|--|
| <b>Product brand name</b>                 | SIRIUS ACT                                     |
| <b>Product designation</b>                | Adapter  |
| <b>Design of the product</b>              | M12 socket (female), 4-pin for M20 cable entry |
| <b>Product type designation</b>           | 3SU1   |
| <b>General technical data</b>             |  |
| <b>Protection class IP</b>                | IP66, IP67, IP69(IP69K)                        |
| <b>Connections/ Terminals</b>             |  |
| <b>Wire length</b>                        | 0.5 m  |
| <b>Installation/ mounting/ dimensions</b> |  |
| <b>Mounting height</b>                    | 19.5 mm  |
| <b>Installation depth</b>                 | 8.5 mm   |
| <b>Accessories</b>                        |  |
| <b>Material of accessory</b>              | Plastic  |
| <b>Color of accessory</b>                 | black  |
| <b>Certificates/ approvals</b>            |  |

|                          |                           |                   |                   |
|--------------------------|---------------------------|-------------------|-------------------|
| General Product Approval | Declaration of Conformity | Test Certificates | Marine / Shipping |
|--------------------------|---------------------------|-------------------|-------------------|



[Miscellaneous](#)

[Type Test Certificates/Test Report](#)



|                   |       |
|-------------------|-------|
| Marine / Shipping | other |
|-------------------|-------|



[Confirmation](#)

### Further information

**Information- and Downloadcenter (Catalogs, Brochures,...)**

[www.siemens.com/sirius/catalogs](http://www.siemens.com/sirius/catalogs)

**Industry Mall (Online ordering system)**

<https://mall.industry.siemens.com/mall/en/en/Catalog/product?mlfb=3SU1930-0HA10-0AA0>

**Cax online generator**

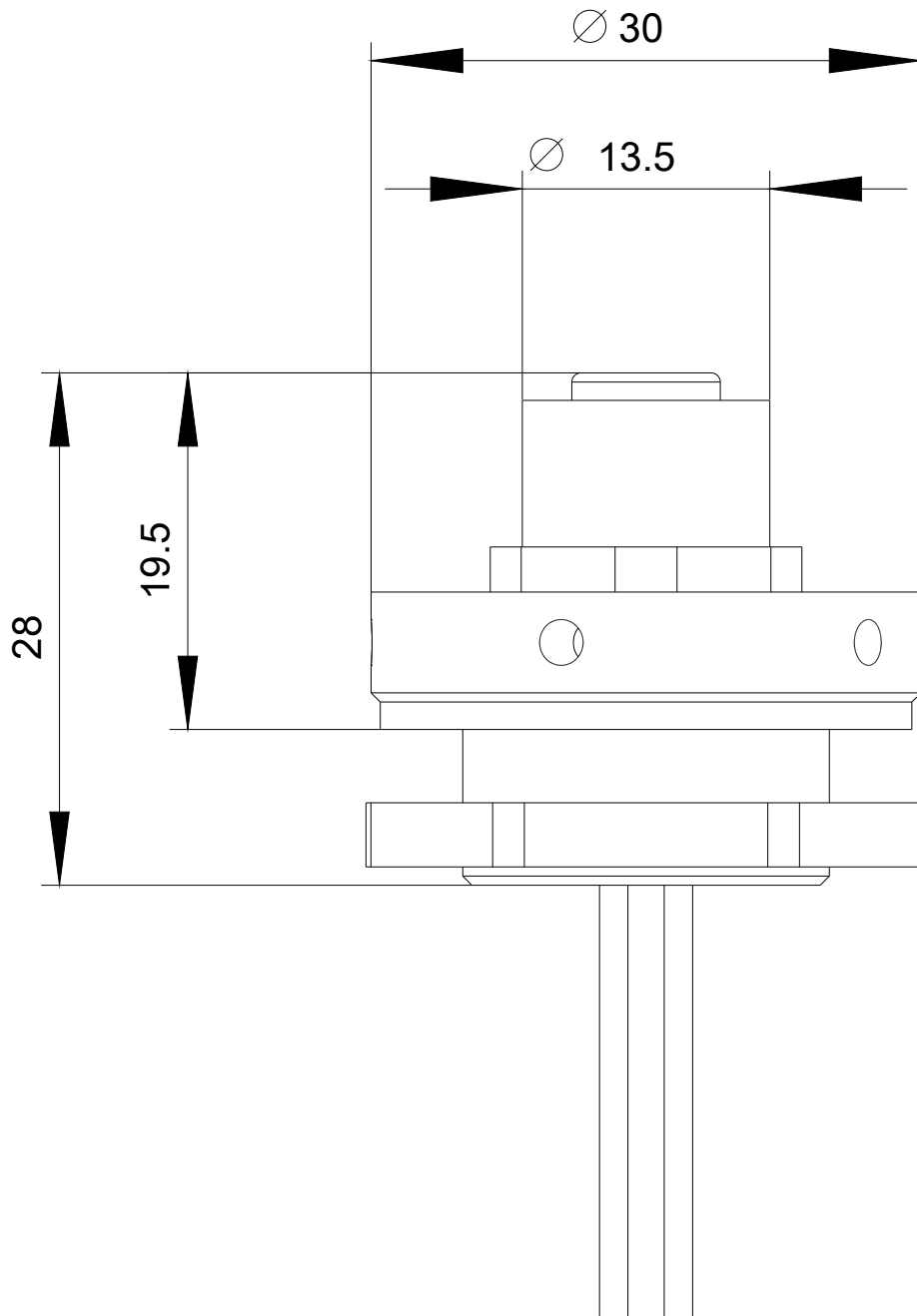
<http://support.automation.siemens.com/WW/CAXorder/default.aspx?lang=en&mlfb=3SU1930-0HA10-0AA0>

**Service&Support (Manuals, Certificates, Characteristics, FAQs,...)**

<https://support.industry.siemens.com/cs/ww/en/ps/3SU1930-0HA10-0AA0>

**Image database (product images, 2D dimension drawings, 3D models, device circuit diagrams, EPLAN macros, ...)**

[http://www.automation.siemens.com/bilddb/cax\\_de.aspx?mlfb=3SU1930-0HA10-0AA0&lang=en](http://www.automation.siemens.com/bilddb/cax_de.aspx?mlfb=3SU1930-0HA10-0AA0&lang=en)



last modified:

10/02/2019