

Single-flash light element, blue, 24 V DC, diameter 50 mm







General technical data	
Product brand name	SIRIUS
Product designation	Flashlight element
Design of the optical signal	flash light
Type of voltage of the operating voltage	DC
Operating voltage	
• 1 at DC rated value	24 V
Relative positive tolerance of the operating voltage	10 %
Relative negative tolerance of the operating voltage	-10 %
Consumed current maximum	40 mA
Service life of LED	50 000 h
Material	PC
Color	blue
Mounting type	Bayonet
Reference code	
• acc. to DIN EN 61346-2	P
• acc. to DIN EN 81346-2	P

Mechanical data	
Outer diameter of the signal column element	50 mm

Lamp	
Product component Light source	Yes
Type of light source	LED
Flash frequency	1 Hz
Light intensity	72 cd

Ambient conditions	
Ambient temperature during operation	-20 ... +50 °C
Protection class IP	IP54
Height	67 mm
Width	52 mm

Certificates/ approvals					
General Product Approval	EMC	Declaration of Conformity		other	
 UL		 RCM	 EG-Konf.	Miscellaneous	Confirmation

Further information

Information- and Downloadcenter (Catalogs, Brochures,...)

www.siemens.com/sirius/catalogs

Industry Mall (Online ordering system)

<https://mall.industry.siemens.com/mall/en/en/Catalog/product?mlfb=8WD4220-0CF>

Cax online generator

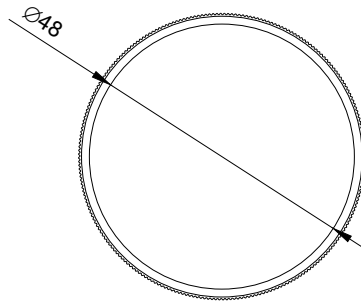
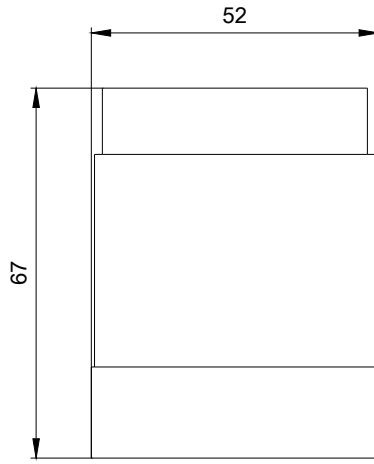
<http://support.automation.siemens.com/WW/CAXorder/default.aspx?lang=en&mlfb=8WD4220-0CF>

Service&Support (Manuals, Certificates, Characteristics, FAQs,...)

<https://support.industry.siemens.com/cs/ww/en/ps/8WD4220-0CF>

Image database (product images, 2D dimension drawings, 3D models, device circuit diagrams, EPLAN macros, ...)

http://www.automation.siemens.com/bilddb/cax_de.aspx?mlfb=8WD4220-0CF&lang=en



last modified:



W9.4444; 8WD42.-..._ALL
 W6.8611; 8WD42.-..._ALL
 03/06/2020