

metric screw connection M20 with hexagon nut for enclosure



Product brand name	SIRIUS ACT
Product designation	Metric cable gland
Design of the product	M20 for round cable and enclosures with 1 to 3 command points
Product type designation	3SU1





Enclosure	
Cable sheath diameter connectable	5 ... 12 mm

General technical data	
Protection class IP	IP66, IP67, IP69(IP69K)

Installation/ mounting/ dimensions	
Height	29.7 mm
Width	29.7 mm
Mounting height	31 mm
Installation depth	13 mm

Accessories	
Material of accessory	Plastic
Color of accessory	black

Certificates/ approvals	
-------------------------	--

General Product Approval			Declaration of Conformity		Test Certificates
 CSA	 UL		 EG-Konf.	<a href="#">Miscellaneous</a>	<a href="#">Special Test Certificate</a>

Test Certificates	Marine / Shipping				
<a href="#">Type Test Certificates/Test Report</a>	 ABS	 LRS	 PRS	 RINA	 RMRS

Marine / Shipping	other
	<a href="#">Confirmation</a>

#### Further information

**Information- and Downloadcenter (Catalogs, Brochures,...)**

[www.siemens.com/ic10](http://www.siemens.com/ic10)

**Industry Mall (Online ordering system)**

<https://mall.industry.siemens.com/mall/en/en/Catalog/product?mlfb=3SU1900-0HG10-0AA0>

**Cax online generator**

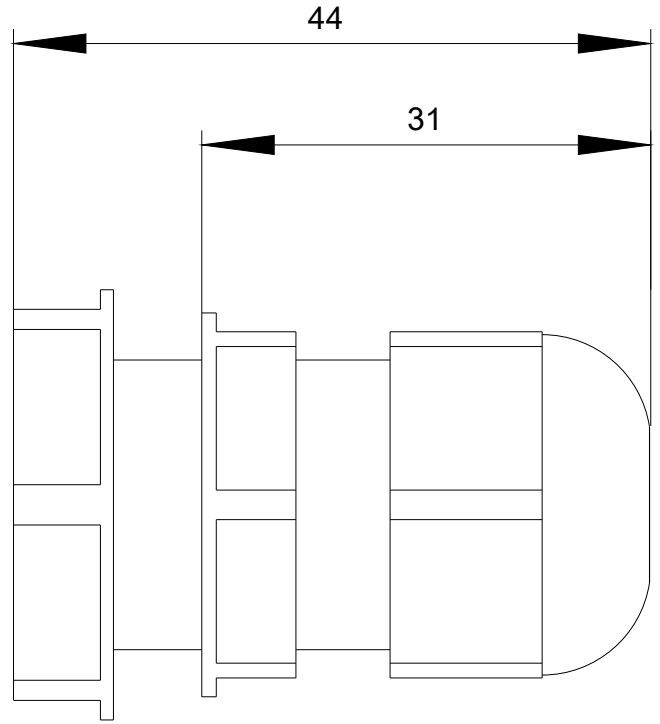
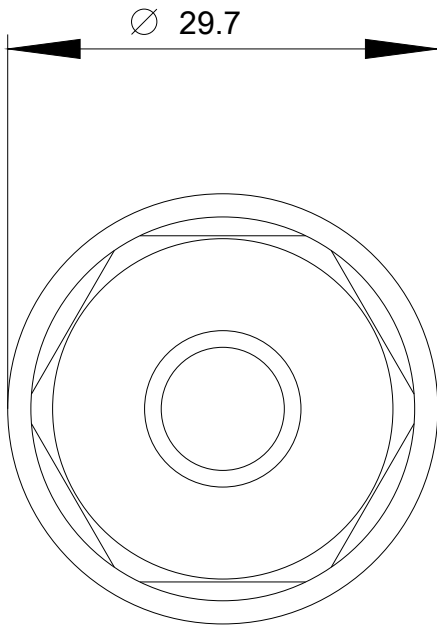
<http://support.automation.siemens.com/WW/CAXorder/default.aspx?lang=en&mlfb=3SU1900-0HG10-0AA0>

**Service&Support (Manuals, Certificates, Characteristics, FAQs,...)**

<https://support.industry.siemens.com/cs/ww/en/ps/3SU1900-0HG10-0AA0>

**Image database (product images, 2D dimension drawings, 3D models, device circuit diagrams, EPLAN macros, ...)**

[http://www.automation.siemens.com/bilddb/cax\\_de.aspx?mlfb=3SU1900-0HG10-0AA0&lang=en](http://www.automation.siemens.com/bilddb/cax_de.aspx?mlfb=3SU1900-0HG10-0AA0&lang=en)



last modified:

12/18/2019