



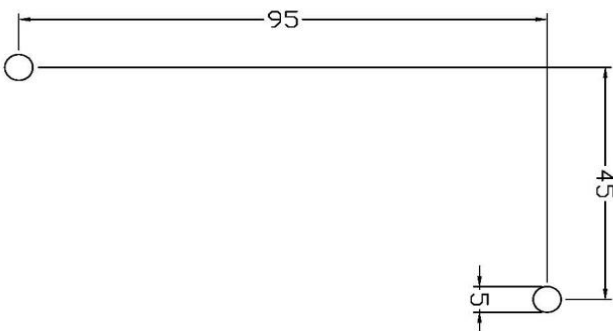
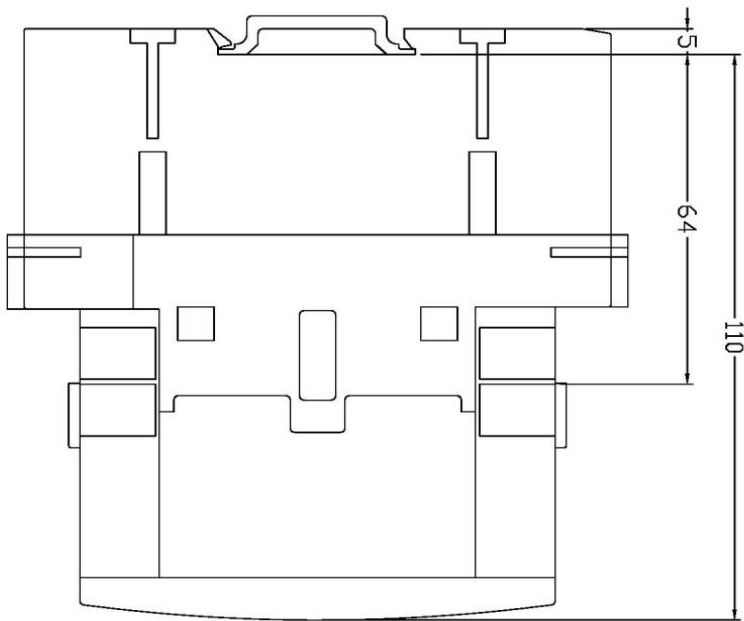
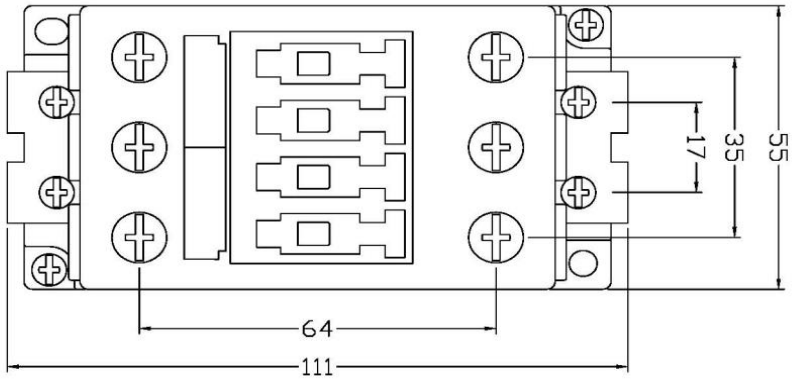
**Electrically held lighting contactor**  
**60 Amp**  
**3NO / 0NC Poles**  
**Maximum voltage rating 600VAC**  
**Control voltage 110VAC 50HZ / 120VAC 60HZ**  
**Open device (no enclosure)**



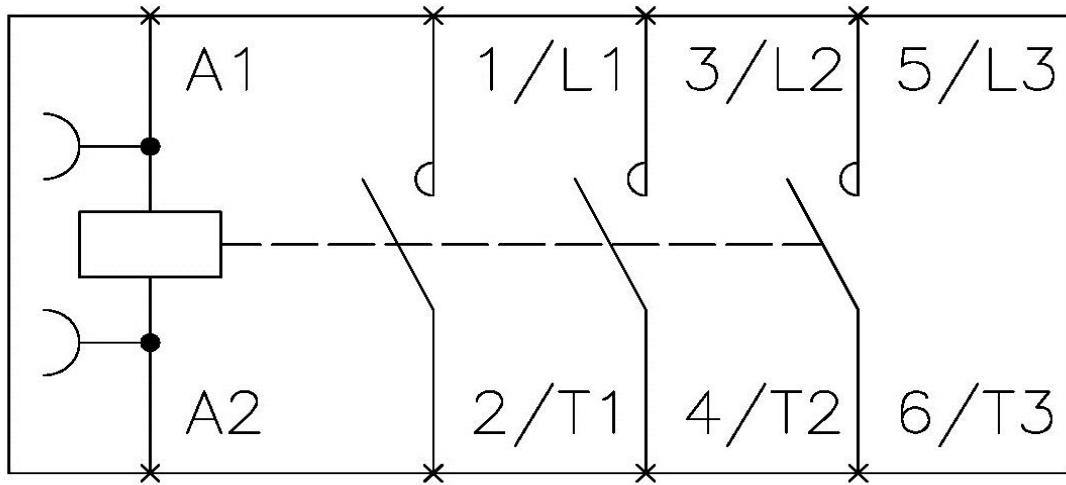
Image is representative and may not depict the actual product.

<b>General technical data:</b>	
Weight	2 lb
Height x Width x Depth	111 x 55 x 110 mm
Finger-safe (main circuit / control circuit)	No / Yes
Maximum altitude	6560 ft
Ambient storage temperature	(-55 to 80)°C / (-67 to 176)°F
Ambient operating temperature	(0 to 40)°C / (32 to 104)°F
Humidity (% non-condensing)	10 to 95
Country of origin	Germany
<b>Contactors:</b>	
Number of poles	3NO / 0NC
Mechanical operating cycles	10,000,000
<b>Current ratings:</b>	
Tungsten (poles per phase)	60A @277V 1p 1ph 60A @480V 2p 1ph 60A @480V 3p 3ph
Ballast (poles per phase)	60A @600V 1p 1ph 60A @600V 2p 1ph 60A @600V 3p 3ph
General & resistive (poles per phase)	60A @600V 1p 1ph 60A @600V 2p 1ph 60A @600V 3p 3ph
<b>Internal/standard auxiliary contact:</b>	
Number of NC / NO auxiliary contacts	0NC / 0NO
Rating	NA
<b>Optional auxiliary contact:</b>	
Max number of NC / NO auxiliary contacts	4NC / 4NO
Rating	A300 / Q300
<b>Coil:</b>	
Voltage	110VAC 50HZ / 120VAC 60HZ Coil
Sealed watts	(no data)
Inrush / sealed power	166 / 12.6 VA
Normal coil operating limits (% of rated voltage)	85% - 110%
Typical drop-out volts (% of rated voltage)	(no data)
Pick-up time / Drop-out time	(no data)
<b>Disconnect type (none):</b>	
Rating	NA
Fuse type accepted	NA

<b>Enclosure:</b>	
Type	Open device (no enclosure)
Rating	NA
<b>Mounting/wiring:</b>	
Mounting orientation	Vertical
Mounting type	Surface
Line side connection type / torque	Screw / 27 - 40 lb-in
Line side solid & stranded conductors	2 x (18 - 3), 1 x (18 - 2) AWG 75°C CU
Load side connection type / torque	Screw / 27 - 40 lb-in
Load side solid & stranded conductors	2 x (18 - 3), 1 x (18 - 2) AWG 75°C CU
Coil connection type / torque	Screw / 7 - 10 lb in.
Coil solid & stranded conductors	2x(18-14) CU 75°C
Main auxiliary contact connection type / torque	NA
Main auxiliary contact solid & stranded conductors	NA
<b>Short circuit current rating:</b>	
Fuses	100kA@600V (Class J 80A max)
Thermal magnetic circuit breaker	24kA@240V; 65kA@480V; 25kA@600V (80A max CB)
<b>Additional information:</b>	
	<a href="#">Brochure</a>



REF. DRAWING D38302001



## LEN00D & E Wiring Diagram