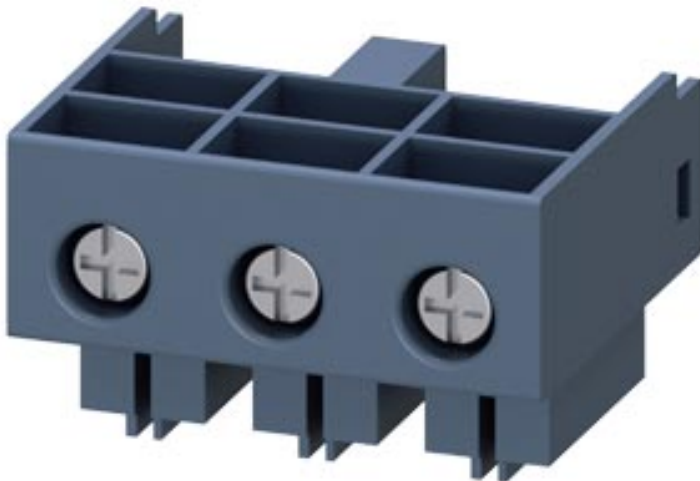


Main circuit terminals (input and output side) Connection main circuit: screw terminal 2 main circuit terminals per package (1 x input side 1 x output side differ)








General technical data		
Product brand name		SIRIUS
Product designation		main circuit terminals (ingoing as well as outgoing)
Protection class IP		IP20
Relative humidity during operation	%	10 ... 90
Ambient temperature		
• during transport	°C	-55 ... +80
• during storage	°C	-55 ... +80
• during operation	°C	-20 ... +60
Reference code acc. to DIN EN 61346-2		X
Reference code acc. to DIN 40719 extended according to IEC 204-2 acc. to IEC 750		X
Installation/ mounting/ dimensions		
Width	mm	45
Height	mm	32
Depth	mm	30
Connections/ Terminals		
Wire stripping length	mm	10

Type of electrical connection		screw-type terminals screw-type terminals
<ul style="list-style-type: none"> for main current circuit for auxiliary and control current circuit 		
Type of connectable conductor cross-sections		
<ul style="list-style-type: none"> for main contacts <ul style="list-style-type: none"> — solid — finely stranded with core end processing at AWG conductors for main contacts 		up to 12 A: 2x (1.5 ... 2.5 mm ²), 2x (2.5 ... 6 mm ²), up to 32 A: 2x (2.5 ... 6 mm ²) up to 12 A: 2x (1.5 ... 2.5 mm ²), 2x (2.5 ... 6 mm ²) up to 32 A: 2x (2.5 ... 6 mm ²) up to 12 A: 2x (16 ... 14), 2x (14 ... 10), 1x 8, up to 32 A: 2x (14 ... 10), 1x 8
Design of screw-type connection for auxiliary contacts		M6
Tightening torque for auxiliary contacts with screw-type terminals	N·m	2 ... 2.5

Certificates/ approvals

Certificate of suitability		IEC / EN 60947-6-2
----------------------------	--	--------------------

General Product Approval	EMC	Declaration of Conformity
 CSA  UL  EAC  RCM	 CE EG-Konf.	Miscellaneous

Shipping Approval

 ABS  BUREAU VERITAS  LRS  PRS  RINA  RMRS

other

[Confirmation](#)

Further information

Information- and Downloadcenter (Catalogs, Brochures,...)

<https://www.siemens.com/ic10>

Industry Mall (Online ordering system)

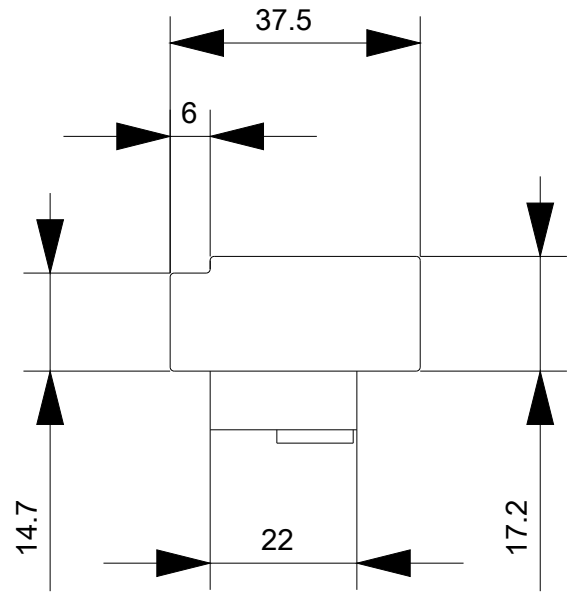
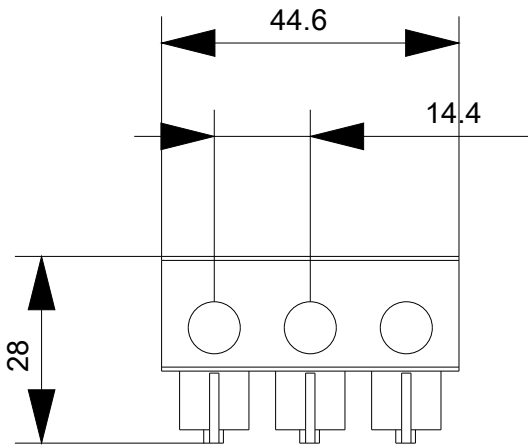
<https://mall.industry.siemens.com/mall/en/en/Catalog/product?mlfb=3RA6920-1A>

Cax online generator

<http://support.automation.siemens.com/WW/CAXorder/default.aspx?lang=en&mlfb=3RA6920-1A>

Service&Support (Manuals, Certificates, Characteristics, FAQs,...)

<https://support.industry.siemens.com/cs/ww/en/ps/3RA6920-1A>



last modified:

03/20/2020