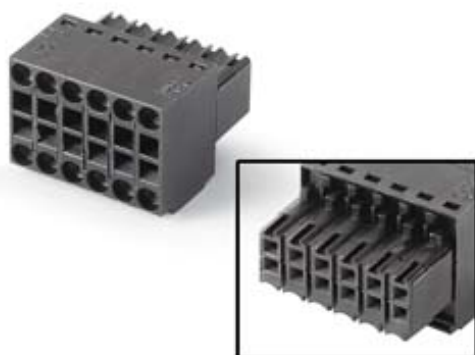


12-pin connector, female 12-pin connector, female 180°, max.: 1.5 mm<sup>2</sup> Further information, Quantity and content: see technical data



General information	
Product type designation	Connector, female, 12-pin
Installation type/mounting	
Mounting type	Conductor cross-section 0.14 to 1.5 mm <sup>2</sup>
Wall mounting/direct mounting	Yes; can be plugged into SIMATIC HMI device
Supply voltage	
Rated value (DC)	24 V
Input current	
Current consumption (rated value)	9 A; Typical, maximum value
Interfaces	
HMI-side interface	
• Number of pins HMI-side	12
Device-side interface	
• Number of pins device-side	12; Female, spring-loaded terminals
Standards, approvals, certificates	
CE mark	Yes
CSA approval	Yes

UL approval	Yes; E60693
cULus	Yes; cURus
EAC (formerly Gost-R)	Yes
RoHS conformity	Yes
Use in hazardous areas	
• ATEX Zone 2	Yes; Device-dependent, see operating instructions
• ATEX Zone 22	Yes; Device-dependent, see operating instructions
• IECEx Zone 2	Yes; Device-dependent, see operating instructions
• IECEx Zone 22	Yes; Device-dependent, see operating instructions
• cULus Class I Zone 1	Yes; Device-dependent, see operating instructions
• cULus Class I Zone 2, Division 2	Yes; Device-dependent, see operating instructions
• FM Class I Division 2	Yes; Device-dependent, see operating instructions
Marine approval	
• Germanischer Lloyd (GL)	Yes; Always comply with the operating instructions of the target device.
• American Bureau of Shipping (ABS)	Yes; Always comply with the operating instructions of the target device.
• Bureau Veritas (BV)	Yes; Always comply with the operating instructions of the target device.
• Det Norske Veritas (DNV)	Yes; Always comply with the operating instructions of the target device.
• Korean Register of Shipping (KRS)	Yes; Always comply with the operating instructions of the target device.
• Lloyds Register of Shipping (LRS)	Yes; Always comply with the operating instructions of the target device.
• Nippon Kaiji Kyokai (Class NK)	Yes; Always comply with the operating instructions of the target device.
• Polski Rejestr Statkow (PRS)	Yes; Always comply with the operating instructions of the target device.
• Chinese Classification Society (CCS)	Yes; Always comply with the operating instructions of the target device.
Ambient conditions	
Suited for indoor use	Yes; Flammability class according to UL 94-V0
Suited for outdoor use	Yes; Possible under certain conditions
Ambient temperature during operation	
• min.	0 °C
• max.	55 °C
Ambient temperature during storage/transportation	
• min.	-20 °C
• max.	70 °C
Relative humidity	
• Operation, max.	80 %
Mechanics/material	

Material	
• Plastic	Yes
Enclosure material (front)	
• Plastic	Yes; Spring-loaded terminals 1.5 mm <sup>2</sup>
Enclosure color (front)	Black
Service life	
• Mechanical service life (mating cycles)	25
Dimensions	
Width	21 mm; 12-pin connector
Height	15.2 mm
Depth	26.25 mm
Weights	
Weight, approx.	7.9 g
Scope of supply	
Delivery quantity in pieces	10; Without ejector
Other	
Merchandise	Yes
Manufacturer name	Weidmüller Interface GmbH & Co. KG
Manufacturer's address	Klingenbergstraße 16, 32758 Detmold, Germany
Target devices	for KP8 PN
Usable in the following products	
• Product 1	<a href="#">6AV3688-3AY36-0AX0</a>
last modified:	03/23/2020