



!!! Phased-out product !!! The preferred successor is 3RQ2000-1CW00.
Coupling relays in industrial enclosure 3 change-over contacts Wide voltage range 24 V to 240 V AC/DC Screw terminal

| | |
|---|--|
| product brand name | SIRIUS |
| product designation | Coupling relay in industrial enclosure |
| product type designation | 3RS18 |
| General technical data | |
| protection class IP | IP20 |
| switching behavior | monostable |
| reference code acc. to IEC 81346-2 | K |
| Substance Prohibitance (Date) | 01.11.2009 00:00:00 |
| control supply voltage 1 at AC | |
| • at 50 Hz | 24 ... 240 V |
| • at 60 Hz | 24 ... 240 V |
| control supply voltage 1 | |
| • at DC | 24 ... 240 V |
| design of the relay operating mechanism | poled |
| product component plug-in socket | No |
| Auxiliary circuit | |
| number of NC contacts for auxiliary contacts | 0 |
| number of NO contacts for auxiliary contacts | 0 |
| number of CO contacts for auxiliary contacts | 3 |
| Main circuit | |
| type of voltage | AC/DC |
| Outputs | |
| ampacity of the output relay at AC-15 at 250 V at 50/60 Hz | 3 A |
| ampacity of the output relay at DC-13 | |
| • at 24 V | 1 A |
| • at 125 V | 0.2 A |
| Connections/ Terminals | |
| type of electrical connection | screw-type terminals |
| Installation/ mounting/ dimensions | |
| fastening method | screw and snap-on mounting onto 35 mm standard mounting rail |
| height | 102 mm |
| width | 22.5 mm |
| depth | 91 mm |
| Ambient conditions | |
| ambient temperature during operation | -25 ... +60 °C |
| Certificates/ approvals | |


[Miscellaneous](#)

other

[Confirmation](#)

Further information

Information- and Downloadcenter (Catalogs, Brochures,...)

<https://www.siemens.com/ic10>

Industry Mall (Online ordering system)

<https://mall.industry.siemens.com/mall/en/en/Catalog/product?mlfb=3RS1800-1HW00>

Cax online generator

<http://support.automation.siemens.com/WW/CAXorder/default.aspx?lang=en&mlfb=3RS1800-1HW00>

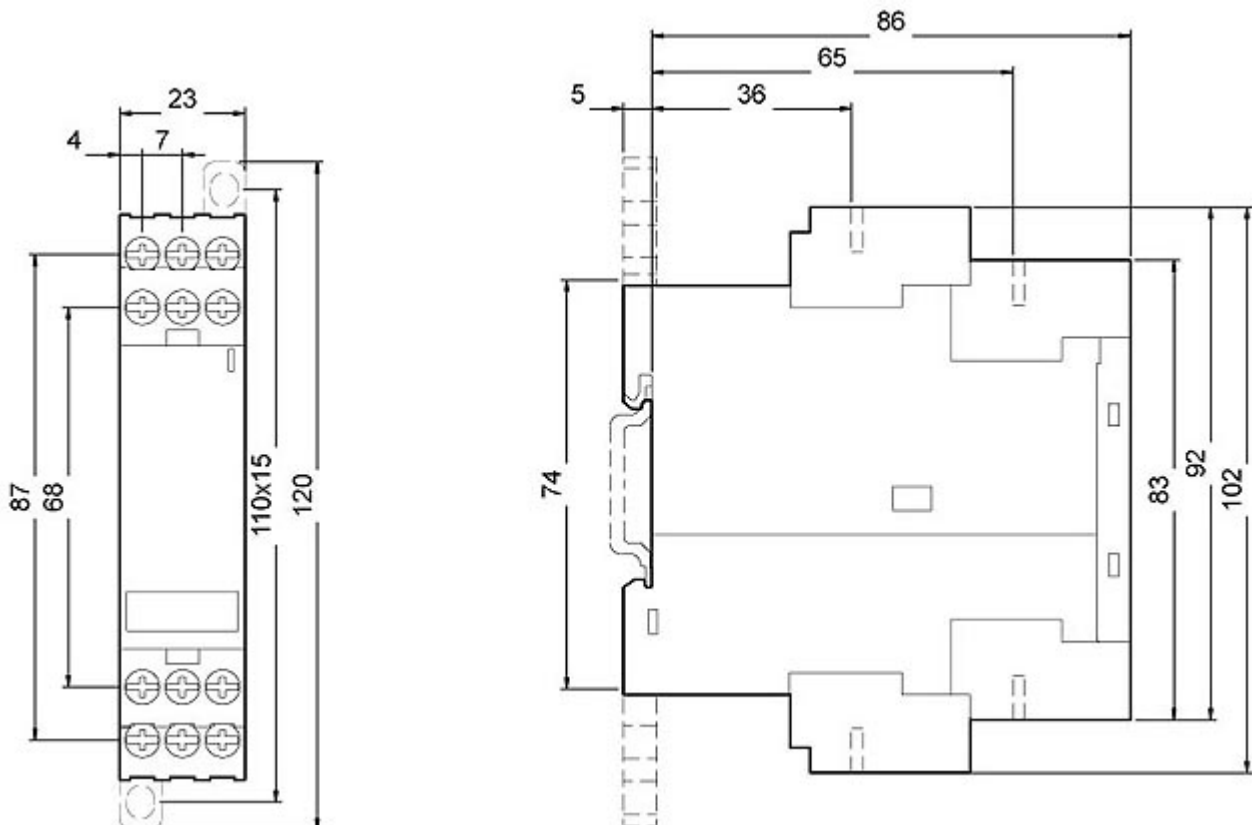
Service&Support (Manuals, Certificates, Characteristics, FAQs,...)

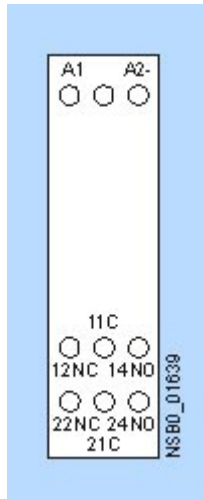
<https://support.industry.siemens.com/cs/ww/en/ps/3RS1800-1HW00>

Image database (product images, 2D dimension drawings, 3D models, device circuit diagrams, EPLAN macros, ...)

http://www.automation.siemens.com/bilddb/cax_de.aspx?mlfb=3RS1800-1HW00&lang=en

Characteristic: Derating

<https://support.industry.siemens.com/cs/ww/en/ps/3RS1800-1HW00/manual>




last modified:

12/21/2020 