



SETRON, Switch disconnecter 3LD, main switch, 3-pole, Iu: 32 A, Operating power / at AC-23 A at 400 V: 11.5 kW, floor mounting with door coupling, rotary operating mechanism, black, central mounting 22.5 mm of the handle

| Model  |                                   |
|--|-----------------------------------|
| product brand name   | SETRON                            |
| product designation  | 3LD Switch disconnecter           |
| design of the product  | Main switch                       |
| display version / for switch position indicator manual operation   | 1 ON - 0 OFF                      |
| design of the actuating element  | Short rotary knob                 |
| design of handle   | rotary operating mechanism, black |
| type of the driving mechanism / motor drive  | No                                |
| General technical data   |                                   |
| number of poles  | 3                                 |
| type of device   | fixed mounting                    |
| type of switch   | Floor mounting with door coupling |
| size of switch disconnecter  | 2                                 |
| mechanical service life (switching cycles) / typical   | 100 000                           |
| electrical endurance (switching cycles)  |                                   |
| • at AC-23 A / at 690 V  | 6 000                             |
| I <sub>2t</sub> value / with closed switch / at 690 V / for combination switch + gG fuse / maximum             | 9 kA <sup>2</sup> .s              |
| let-through I <sub>2t</sub> value / with closed switch / at 440 V / for combination switch + gG fuse / maximum | 9 kA <sup>2</sup> .s              |
| operating frequency / maximum  | 50 1/h                            |
| Voltage  |                                   |
| insulation voltage / rated value   | 690 V                             |
| surge voltage resistance / rated value   | 6 kV                              |
| Protection class   |                                   |
| protection class IP  | IP65                              |
| degree of protection NEMA rating   | 1, 3R, 4X, 12                     |
| protection class IP / on the front   | IP65                              |
| Dissipation  |                                   |
| power loss [W]   |                                   |
| • for rated value of the current / at AC / in hot operating state / per pole                                   | 1.8 W                             |
| • per conductor / typical  | 1.8 W                             |
| Current  |                                   |
| operational current  |                                   |
| • at 40 °C / rated value   | 32 A                              |
| • at 45 °C / rated value   | 32 A                              |

|  |   |
|--|---|
| <ul style="list-style-type: none"> <li>• at 50 °C / rated value</li> <li>• at 55 °C / rated value</li> <li>• at AC / rated value</li> <li>• at AC-23 A / at 400 V / rated value</li> <li>• at AC-21 / at 690 V / rated value</li> <li>• at AC-21 A / at 240 V / rated value</li> <li>• at AC-21 A / at 440 V / rated value</li> </ul>                                    | 32 A<br>32 A<br>32 A<br>22 A<br>32 A<br>32 A<br>32 A                |
| operational current / of upstream fuse / rated value   | 40 A  |
| let-through current / with closed switch   |   |
| <ul style="list-style-type: none"> <li>• at 440 V / for combination switch + gG fuse / maximum</li> <li>• at 690 V / for combination switch + gG fuse / maximum permissible</li> </ul>   | 4.5 kA<br>4.5 kA  |
| <b>Main circuit</b>  |   |
| operating power  |   |
| <ul style="list-style-type: none"> <li>• at AC-23 A / at 240 V / rated value</li> <li>• at AC-23 A / at 400 V / rated value</li> <li>• at AC-23 A / at 440 V / rated value</li> <li>• at AC-23 A / at 690 V / rated value</li> <li>• at AC-3 / at 240 V / rated value</li> <li>• at AC-3 / at 400 V / rated value</li> <li>• at AC-3 / at 690 V / rated value</li> </ul> | 6 kW<br>11.5 kW<br>11.5 kW<br>11.5 kW<br>5.5 kW<br>9.5 kW<br>9.5 kW |
| operational current / rated value  | 32 A  |
| <b>Auxiliary circuit</b>   |   |
| number of CO contacts / for auxiliary contacts   | 0   |
| number of NC contacts / for auxiliary contacts   | 0   |
| number of NO contacts / for auxiliary contacts   | 0   |
| operating voltage / of auxiliary contacts / at AC / maximum  | 500 V   |
| continuous current / of the auxiliary contact / rated value  | 10 A  |
| insulation voltage / of the auxiliary switch / rated value   | 500 V   |
| <b>Suitability</b>   |   |
| suitability for use  |   |
| <ul style="list-style-type: none"> <li>• main switch</li> <li>• switch disconnecter</li> <li>• EMERGENCY OFF switch</li> <li>• safety switch</li> <li>• maintenance/repair switch</li> </ul>   | Yes<br>Yes<br>No<br>Yes<br>Yes                                      |
| <b>Appearance</b>  |   |
| color / of the actuating element   | black   |
| <b>Product details</b>   |   |
| product feature  |   |
| <ul style="list-style-type: none"> <li>• can be locked into OFF position</li> </ul>  | Yes   |
| number of bracket locks / maximum  | 3   |
| hasp thickness / of the bracket locks / minimum  | 4 mm  |
| hasp thickness / of the bracket locks / maximum  | 8 mm  |
| product extension / optional   |   |
| <ul style="list-style-type: none"> <li>• motor drive</li> <li>• voltage trigger</li> </ul>   | No<br>No  |
| <b>Short circuit</b>   |   |
| conditional short-circuit current / with line-side fuse protection   |   |
| <ul style="list-style-type: none"> <li>• at 690 V / by gG fuse / rated value</li> </ul>  | 50 kA   |
| <b>according UL</b>  |   |
| operational current / at AC / according to UL 508/UL 60947-4-1 / rated value   | 32 A  |
| operating voltage / at AC / at 50/60 Hz / according to UL 508/UL 60947-4-1 / rated value   | 600 V   |
| active power [hp] / at AC / at 480 V / according to UL 508/UL 60947-4-1 / rated value  | 20  |

|   |  |
|---|--|
| active power [hp] / at AC / at 600 V / according to UL 508/UL 60947-4-1 / rated value | 20   |
| short-time withstand current (SCCR) / at 600 V / according to UL 508/UL 60947-4-1     | 5 kA   |
| continuous current / of upstream fuse / according to UL / rated value                 | 80 A   |
| type of fuse / according to UL  | RK5  |
| <b>Number</b>   |  |
| number of connectable NC contacts / for auxiliary contacts / attachable / maximum     | 3  |
| number of connectable NO contacts / for auxiliary contacts / attachable / maximum     | 5  |
| number of connectable CO contacts / for auxiliary contacts / attachable / maximum     | 0  |
| <b>Connections</b>  |  |
| AWG number / as coded connectable conductor cross section / solid                     |  |
| • maximum   | 8  |
| • minimum   | 14   |
| type of connectable conductor cross-sections / for copper conductor                   |  |
| • solid   | 1x (1,5...16mm <sup>2</sup> )  |
| • finely stranded / with core end processing  | 1x (1,5...10mm <sup>2</sup> )  |
| • stranded  | 1x (1,5...16mm <sup>2</sup> )  |
| type of connectable conductor cross-sections / for auxiliary contacts                 |  |
| • solid   | lateral auxiliary switch 2x (0,75 ... 2,5mm <sup>2</sup> ), 1x 4mm <sup>2</sup> ; front auxiliary switch 1x (0,75 ... 2,5mm <sup>2</sup> ) |
| • finely stranded / with core end processing  | lateral auxiliary switch 2x (0,75 ... 1,5mm <sup>2</sup> ), 1x 2,5mm <sup>2</sup> ; front auxiliary switch 1x 2,5mm <sup>2</sup>           |
| • stranded  | lateral auxiliary switch 2x (0,75 ... 2,5mm <sup>2</sup> ), 1x 4mm <sup>2</sup> ; front auxiliary switch 1x (0,75 ... 2,5mm <sup>2</sup> ) |
| type of electrical connection   |  |
| • for main current circuit  | box terminal   |
| • for auxiliary contacts  | connection terminals   |
| <b>Requirements</b>   |  |
| design of the fuse link   |  |
| • for short-circuit protection of the main circuit / required                         | fuse gL/gG: 40 A   |
| • for short-circuit protection of the auxiliary switch / required                     | fuse gL/gG: 10 A   |
| <b>Mechanical Design</b>  |  |
| height  | 84 mm  |
| width   | 67 mm  |
| depth   | 451.5 mm   |
| fastening method  | Built-in unit fixed-mounted version  |
| fastening method  |  |
| • 4-hole front mounting   | No   |
| • front mounting with central attachment  | Yes  |
| • rail mounting   | Yes  |
| net weight  | 410 g  |
| <b>Environmental conditions</b>   |  |
| ambient temperature / during operation  |  |
| • minimum   | -25 °C   |
| • maximum   | 55 °C  |
| ambient temperature / during storage / minimum  | -25 °C   |
| <b>General Product Approval</b>   |  |



[Miscellaneous](#)



| Declaration of Conformity | Test Certificates | Marine / Shipping | other |
|---------------------------|-------------------|-------------------|-------|
|---------------------------|-------------------|-------------------|-------|



EG-Konf.

[Special Test Certificate](#)



LRS



PRS



DNV-GL

[Miscellaneous](#)

other

[Environmental Conformations](#)

#### Further information

Information- and Downloadcenter (Catalogs, Brochures,...)

<http://www.siemens.com/lowvoltage/catalogs>

Industry Mall (Online ordering system)

<https://mall.industry.siemens.com/mall/en/en/Catalog/product?mlfb=3LD2244-0TK51>

Service&Support (Manuals, Certificates, Characteristics, FAQs,...)

<https://support.industry.siemens.com/cs/ww/en/ps/3LD2244-0TK51>

Image database (product images, 2D dimension drawings, 3D models, device circuit diagrams, ...)

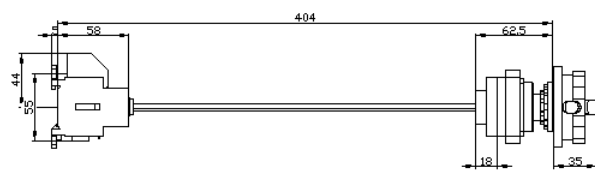
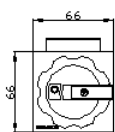
[http://www.automation.siemens.com/bilddb/cax\\_en.aspx?mlfb=3LD2244-0TK51](http://www.automation.siemens.com/bilddb/cax_en.aspx?mlfb=3LD2244-0TK51)

CAX-Online-Generator

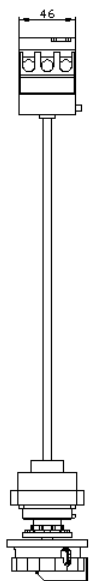
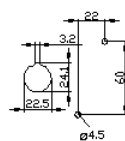
<http://www.siemens.com/cax>

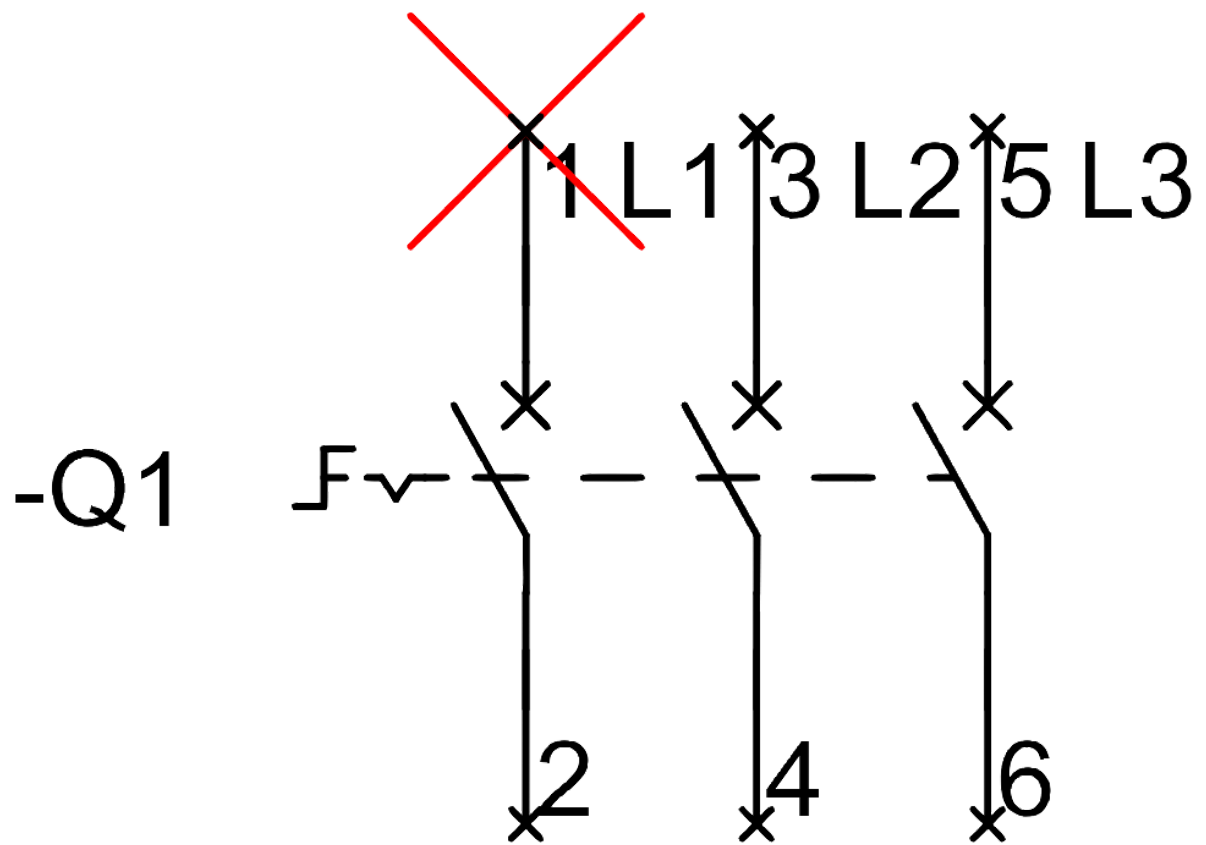
Tender specifications

<http://www.siemens.com/specifications>



Tuer/Bögel/ Base Plancher/  
Puerto/Bornos/ Plinto/ Fundo





-CI

