



Circuit breaker size S00 for system protection with approval circuit breaker UL 489, CSA C22.2 No.5-02 A-release 15 A N-release 208 A screw terminal Standard switching capacity

product brand name	SIRIUS
product designation	Circuit breaker
design of the product	For system protection according to UL 489/CSA C22.2 No. 5
product type designation	3RV2
General technical data	
size of the circuit-breaker	S00
product extension auxiliary switch	Yes
power loss [W] for rated value of the current	
• at AC in hot operating state	9.25 W
• at AC in hot operating state per pole	3.1 W
insulation voltage with degree of pollution 3 at AC rated value	690 V
surge voltage resistance rated value	6 kV
maximum permissible voltage for safe isolation in networks with grounded star point	
• between main and auxiliary circuit	400 V
• between main and auxiliary circuit	400 V
shock resistance acc. to IEC 60068-2-27	25g / 11 ms
mechanical service life (switching cycles)	
• of the main contacts typical	100 000
• of auxiliary contacts typical	100 000
electrical endurance (switching cycles) typical	100 000
reference code acc. to IEC 81346-2	Q
Substance Prohibitance (Date)	01.10.2009 00:00:00
Ambient conditions	
installation altitude at height above sea level maximum	2 000 m
ambient temperature	
• during operation	-20 ... +60 °C
• during storage	-50 ... +80 °C
• during transport	-50 ... +80 °C
temperature compensation	-20 ... +60 °C
relative humidity during operation	10 ... 95 %
Main circuit	
number of poles for main current circuit	3
operating voltage	
• rated value	690 V
• at AC-3 rated value maximum	690 V
operating frequency rated value	50 ... 60 Hz

operational current rated value	16 A
operational current at AC-3 at 400 V rated value	16 A
operating power at AC-3	
• at 230 V rated value	4 kW
• at 400 V rated value	7.5 kW
• at 500 V rated value	7.5 kW
• at 690 V rated value	11 kW
operating frequency at AC-3 maximum	15 1/h
Auxiliary circuit	
number of NC contacts for auxiliary contacts	0
number of NO contacts for auxiliary contacts	0
number of CO contacts for auxiliary contacts	0
Protective and monitoring functions	
product function	
• ground fault detection	No
• phase failure detection	No
design of the overload release	thermal
breaking capacity operating short-circuit current (Ics) at AC	
• at 240 V rated value	100 kA
• at 400 V rated value	30 kA
• at 500 V rated value	5 kA
• at 690 V rated value	2 kA
breaking capacity maximum short-circuit current (Icu)	
• at AC at 240 V rated value	100 kA
• at AC at 400 V rated value	55 kA
• at AC at 500 V rated value	10 kA
• at AC at 690 V rated value	4 kA
• at 480 AC Y/277 V acc. to UL 489 rated value	65 kA
response value current of instantaneous short-circuit trip unit	208 A
Short-circuit protection	
product function short circuit protection	Yes
design of the short-circuit trip	magnetic
design of the fuse link for IT network for short-circuit protection of the main circuit	
• at 240 V	gL/gG 80 A
• at 400 V	gL/gG 63 A
• at 500 V	gL/gG 50 A
• at 690 V	gL/gG 40 A
Installation/ mounting/ dimensions	
mounting position	any
fastening method	screw and snap-on mounting onto 35 mm standard mounting rail according to DIN EN 60715
height	144 mm
width	45 mm
depth	97 mm
required spacing	
• for grounded parts at 400 V	
— downwards	30 mm
— upwards	30 mm
— at the side	30 mm
• for live parts at 400 V	
— downwards	30 mm
— upwards	30 mm
— at the side	30 mm
• for grounded parts at 500 V	
— downwards	30 mm
— upwards	30 mm

<ul style="list-style-type: none"> — at the side • for live parts at 500 V <ul style="list-style-type: none"> — downwards — upwards — at the side • for grounded parts at 690 V <ul style="list-style-type: none"> — downwards — upwards — backwards — at the side — forwards • for live parts at 690 V <ul style="list-style-type: none"> — downwards — upwards — backwards — at the side — forwards 	30 mm 30 mm 30 mm 30 mm 70 mm 70 mm 0 mm 30 mm 0 mm 70 mm 70 mm 0 mm 30 mm 0 mm		
Connections/ Terminals			
product component removable terminal for auxiliary and control circuit	No		
type of electrical connection			
• for main current circuit	screw-type terminals		
arrangement of electrical connectors for main current circuit	Top and bottom		
type of connectable conductor cross-sections			
• for main contacts <ul style="list-style-type: none"> — solid or stranded — finely stranded with core end processing 	1 ... 10 mm ² , max. 2x 10 mm ² 1 ... 16 mm ² , max. 6 + 16 mm ²		
• at AWG cables for main contacts	2x (14 ... 10)		
tightening torque			
• for main contacts with screw-type terminals	2.5 ... 3 N·m		
design of screwdriver shaft	Diameter 5 to 6 mm		
size of the screwdriver tip	Pozidriv 2		
design of the thread of the connection screw			
• for main contacts	M4		
Safety related data			
B10 value			
• with high demand rate acc. to SN 31920	5 000		
proportion of dangerous failures			
• with low demand rate acc. to SN 31920	50 %		
• with high demand rate acc. to SN 31920	50 %		
failure rate [FIT]			
• with low demand rate acc. to SN 31920	50 FIT		
T1 value for proof test interval or service life acc. to IEC 61508	10 y		
protection class IP on the front acc. to IEC 60529	IP20		
touch protection on the front acc. to IEC 60529	finger-safe, for vertical contact from the front		
display version for switching status	Handle		
Certificates/ approvals			
<table> <tr> <td>General Product Approval</td><td>Declaration of Conformity</td></tr> </table>		General Product Approval	Declaration of Conformity
General Product Approval	Declaration of Conformity		



[KC](#)



[UK Declaration of Conformity](#)

Declaration of	Test Certificates	Marine / Shipping
----------------	-------------------	-------------------

Conformity



[Type Test Certificates/Test Report](#)

[Special Test Certificate](#)



other

[Confirmation](#)



Railway

[Vibration and Shock](#)

Further information

Information- and Downloadcenter (Catalogs, Brochures,...)

<https://www.siemens.com/ic10>

Industry Mall (Online ordering system)

<https://mall.industry.siemens.com/mall/en/en/Catalog/product?mlfb=3RV2711-4AD10>

Cax online generator

<http://support.automation.siemens.com/WW/CAXorder/default.aspx?lang=en&mlfb=3RV2711-4AD10>

Service&Support (Manuals, Certificates, Characteristics, FAQs,...)

<https://support.industry.siemens.com/cs/ww/en/ps/3RV2711-4AD10>

Image database (product images, 2D dimension drawings, 3D models, device circuit diagrams, EPLAN macros, ...)

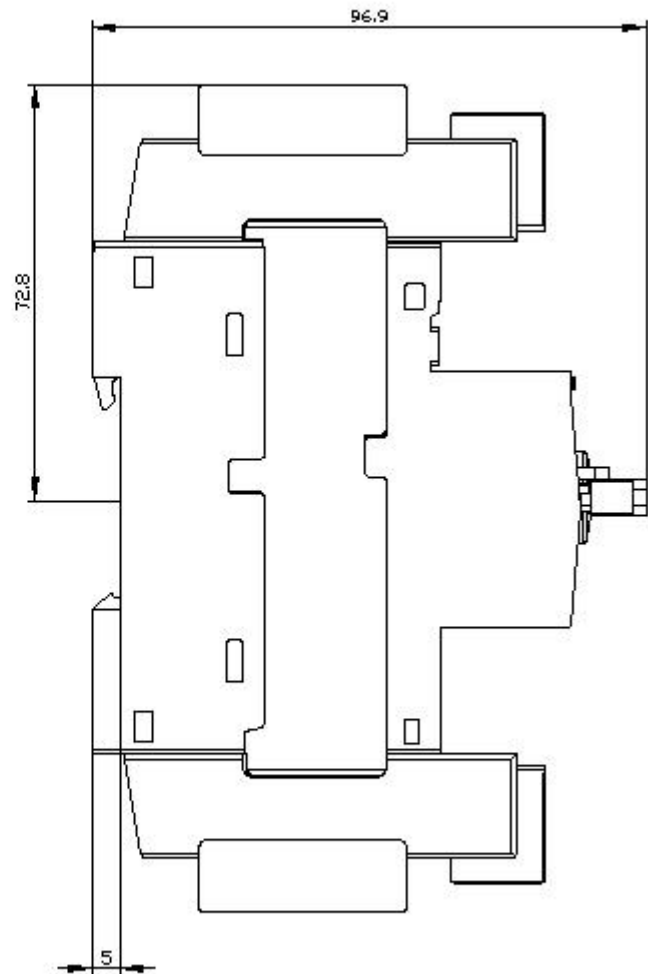
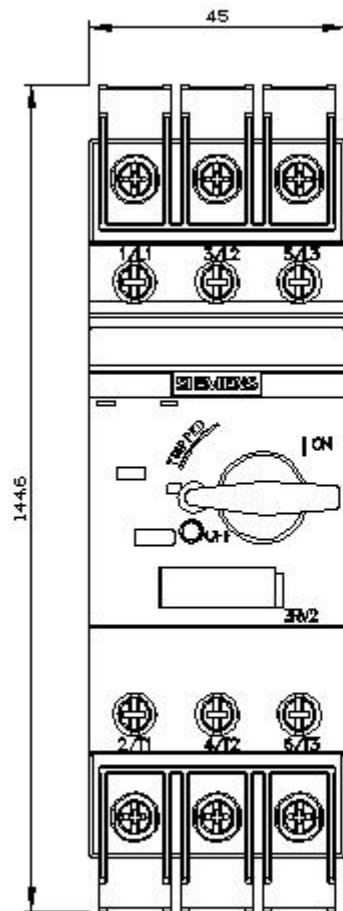
http://www.automation.siemens.com/bilddb/cax_de.aspx?mlfb=3RV2711-4AD10&lang=en

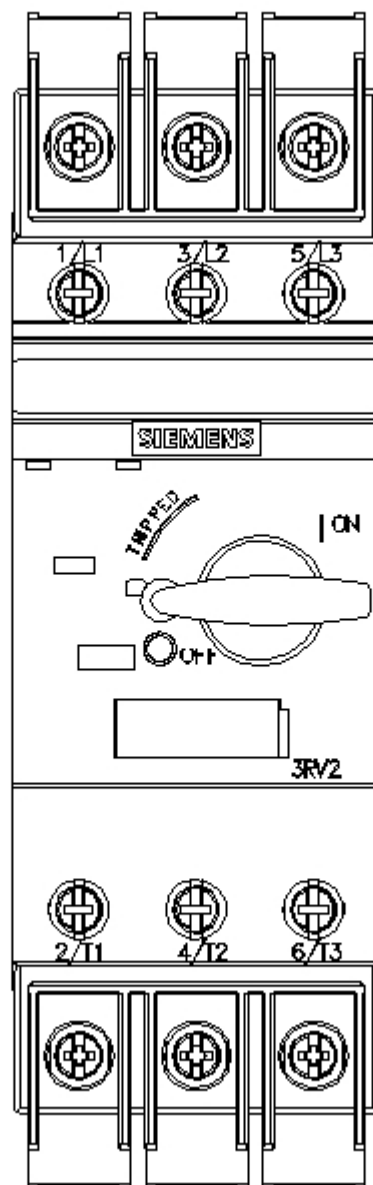
Characteristic: Tripping characteristics, I^2t , Let-through current

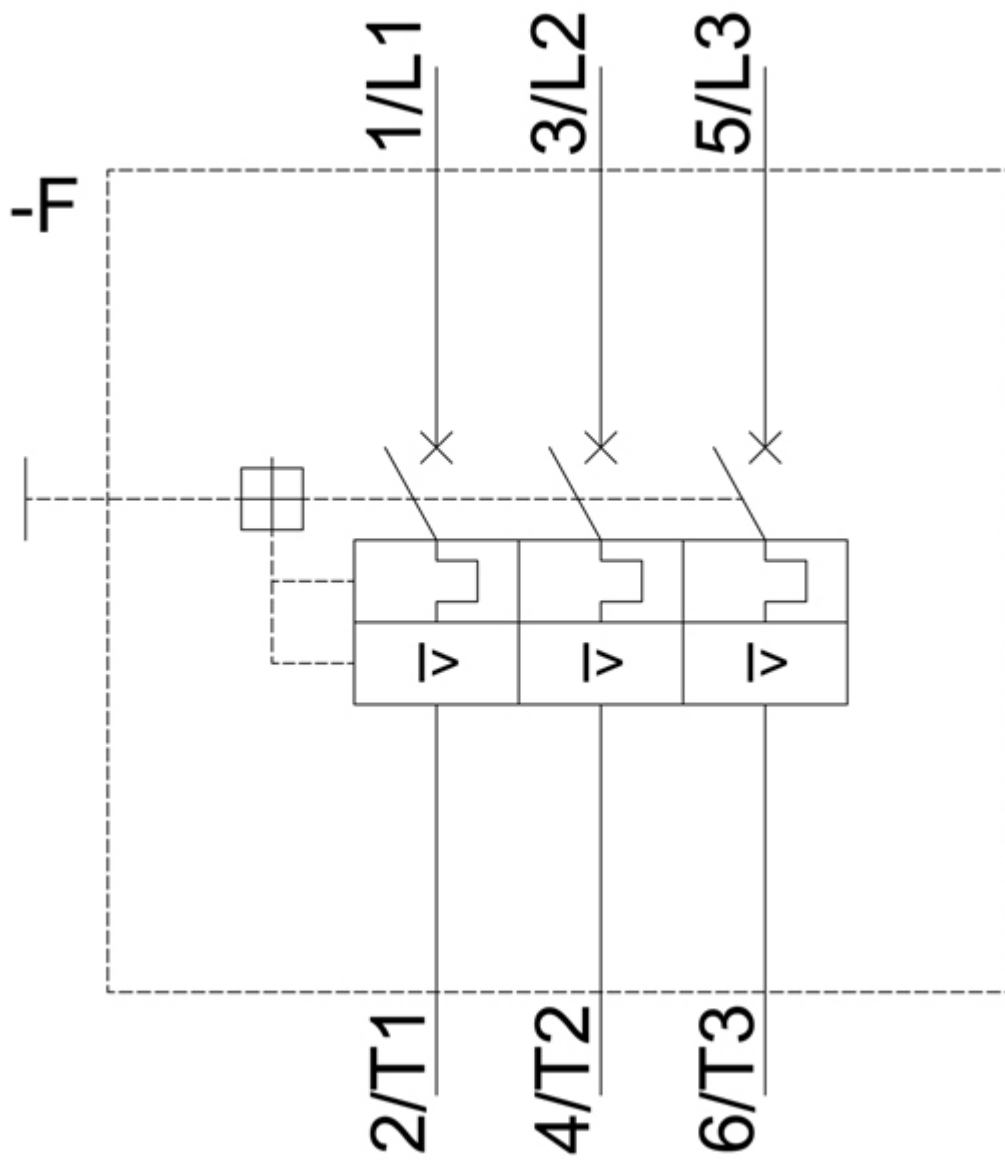
<https://support.industry.siemens.com/cs/ww/en/ps/3RV2711-4AD10/char>

Further characteristics (e.g. electrical endurance, switching frequency)

<http://www.automation.siemens.com/bilddb/index.aspx?view=Search&mlfb=3RV2711-4AD10&objecttype=14&gridview=view1>







last modified:

2/5/2021 