



Coordinate switch, 22 mm, round, metal shiny, black, 4 switch positions, latching, without mechanical interlocking, in O position, with holder, 1 NO, 1 NO, 1 NO, 1 NO, screw terminal,

|  |  |
|--|--|
| <b>product brand name</b>  | SIRIUS ACT   |
| <b>product designation</b>   | Coordinate switches  |
| <b>design of the product</b>   | Complete unit  |
| <b>product type designation</b>  | 3SU1   |
| <b>product line</b>  | Metal, shiny, 22 mm  |
| <b>manufacturer's article number</b>   |  |
| <ul style="list-style-type: none"> <li>• of supplied contact module at position 1</li> <li>• of supplied contact module at position 2</li> <li>• of supplied contact module at position 3</li> <li>• of supplied contact module at position 4</li> <li>• of the supplied holder</li> <li>• of the supplied actuator</li> </ul> | <ul style="list-style-type: none"> <li>3SU1400-1AA10-1BA0</li> <li>3SU1400-1AA10-1BA0</li> <li>3SU1400-1AA10-1BA0</li> <li>3SU1400-1AA10-1BA0</li> <li>3SU1550-0BA10-0AA0</li> <li>3SU1050-7AE88-0AA0</li> </ul> |
| <b>Enclosure</b>   |  |
| <b>shape of the enclosure front</b>  | round  |
| <b>Actuator</b>  |  |
| <b>design of the actuating element</b>   | without mechanical interlock   |
| <b>principle of operation of the actuating element</b>   | latching   |
| <b>direction of actuation</b>  | horizontal / vertical  |
| product extension optional light source  | No   |
| color of the actuating element   | black  |
| <b>material of the actuating element</b>   | plastic  |
| <b>shape of the actuating element</b>  | Extended handle  |
| <b>outer diameter of the actuating element</b>   | 30.5 mm  |
| <b>number of contact modules</b>   | 4  |
| <b>number of switching positions</b>   | 4  |
| <b>Maximum deflection angle [°]</b>  | 30°  |
| <b>Front ring</b>  |  |
| <b>product component front ring</b>  | Yes  |
| <b>design of the front ring</b>  | high   |
| <b>material of the front ring</b>  | Metal, high gloss  |
| <b>color of the front ring</b>   | silver   |
| <b>Holder</b>  |  |
| <b>material of the holder</b>  | Metal  |
| <b>General technical data</b>  |  |
| product function positive opening  | No   |
| insulation voltage rated value   | 500 V  |
| <b>degree of pollution</b>   | 3  |

|  |   |
|--|---|
| type of voltage of the operating voltage   | AC/DC   |
| <b>surge voltage resistance rated value</b>  | 6 kV  |
| <b>protection class IP</b><br>• of the terminal  | IP65, IP67<br>IP20  |
| <b>shock resistance</b><br>• acc. to IEC 60068-2-27  | Sinusoidal half-wave 50g / 11 ms  |
| <b>vibration resistance</b><br>• acc. to IEC 60068-2-6   | 10 ... 500 Hz: 5g   |
| <b>operating frequency maximum</b>   | 3 600 1/h   |
| <b>mechanical service life (switching cycles)</b><br>• as operating period per direction of actuation typical  | 100 000   |
| electrical endurance (switching cycles) typical  | 10 000 000  |
| <b>electrical endurance (switching cycles) with contactors 3RT1015 to 3RT1026 typical</b>  | 10 000 000  |
| <b>thermal current</b>   | 10 A  |
| <b>reference code acc. to IEC 81346-2</b>  | S   |
| <b>continuous current of the C characteristic MCB</b>  | 10 A; for a short-circuit current smaller than 400 A  |
| <b>continuous current of the quick DIAZED fuse link</b>  | 10 A  |
| <b>continuous current of the DIAZED fuse link gG</b><br>• operating voltage at AC<br>— at 50 Hz rated value<br>— at 60 Hz rated value<br>• operating voltage at DC rated value   | 5 ... 500 V<br>5 ... 500 V<br>5 ... 500 V   |
| <b>Power Electronics</b>   |   |
| <b>contact reliability</b>   | One maloperation per 100 million (17 V, 5 mA), one maloperation per 10 million (5 V, 1 mA)  |
| <b>Auxiliary circuit</b>   |   |
| <b>design of the contact of auxiliary contacts</b>   | Silver alloy  |
| <b>number of NC contacts for auxiliary contacts</b>  | 0   |
| <b>number of NO contacts for auxiliary contacts</b>  | 4   |
| <b>Connections/ Terminals</b>  |   |
| type of electrical connection of modules and accessories   | Screw-type terminal   |
| <b>type of connectable conductor cross-sections</b><br>• solid with core end processing<br>• solid without core end processing<br>• finely stranded with core end processing<br>• finely stranded without core end processing<br>• at AWG cables | 2x (0.5 ... 0.75 mm <sup>2</sup> )<br>2x (1.0 ... 1.5 mm <sup>2</sup> )<br>2x (0.5 ... 1.5 mm <sup>2</sup> )<br>2x (1.0 ... 1.5 mm <sup>2</sup> )<br>2x (18 ... 14) |
| <b>tightening torque of the screws in the bracket</b><br>• tightening torque for auxiliary contacts with screw-type terminals  | 1 ... 1.2 N·m<br>0.8 ... 1 N·m  |
| <b>Safety related data</b>   |   |
| B10 value with high demand rate acc. to SN 31920   | 100 000   |
| <b>proportion of dangerous failures</b><br>• with low demand rate acc. to SN 31920<br>• with high demand rate acc. to SN 31920   | 20 %<br>20 %  |
| failure rate [FIT] with low demand rate acc. to SN 31920   | 100 FIT   |
| <b>T1 value for proof test interval or service life acc. to IEC 61508</b>  | 20 y  |
| <b>Ambient conditions</b>  |   |
| • ambient temperature during operation<br>• ambient temperature during storage   | -25 ... +70 °C<br>-40 ... +80 °C  |
| environmental category during operation acc. to IEC 60721  | 3M6, 3S2, 3B2, 3C3, 3K6 (with relative air humidity of 10 ... 95 %, no condensation in operation permitted for all devices behind front panel)                      |
| <b>Installation/ mounting/ dimensions</b>  |   |
| <b>fastening method</b><br>• of modules and accessories  | front panel mounting<br>Front plate mounting  |
| <b>height</b>  | 40 mm   |

|   |         |
|---|---------|
| width                                       | 40 mm   |
| shape of the installation opening           | round   |
| mounting diameter                           | 22.3 mm |
| positive tolerance of installation diameter | 0.4 mm  |
| mounting height                             | 71.3 mm |
| installation width                          | 30.5 mm |
| installation depth                          | 53.7 mm |

### Certificates/ approvals

|                          |                           |
|--------------------------|---------------------------|
| General Product Approval | Declaration of Conformity |
|--------------------------|---------------------------|



CSA

CCC

CCC

UL

EG-Konf.

|                           |                   |                   |
|---------------------------|-------------------|-------------------|
| Declaration of Conformity | Test Certificates | Marine / Shipping |
|---------------------------|-------------------|-------------------|

[Miscellaneous](#)

[Special Test Certificate](#)

[Type Test Certificates/Test Report](#)



ABS



LRS



PRS

|                   |       |
|-------------------|-------|
| Marine / Shipping | other |
|-------------------|-------|



RINA



RMRS

[Confirmation](#)

### Further information

Information- and Downloadcenter (Catalogs, Brochures,...)

<https://www.siemens.com/ic10>

Industry Mall (Online ordering system)

<https://mall.industry.siemens.com/mall/en/en/Catalog/product?mlfb=3SU1150-7AE88-1QA0>

Cax online generator

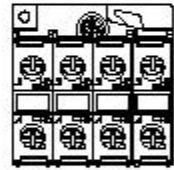
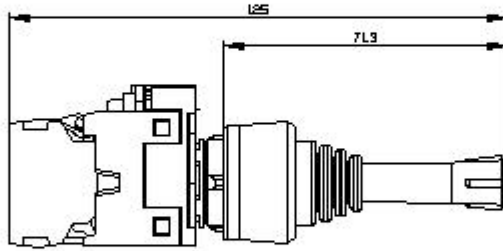
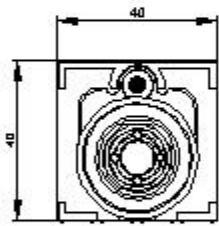
<http://support.automation.siemens.com/WW/CAXorder/default.aspx?lang=en&mlfb=3SU1150-7AE88-1QA0>

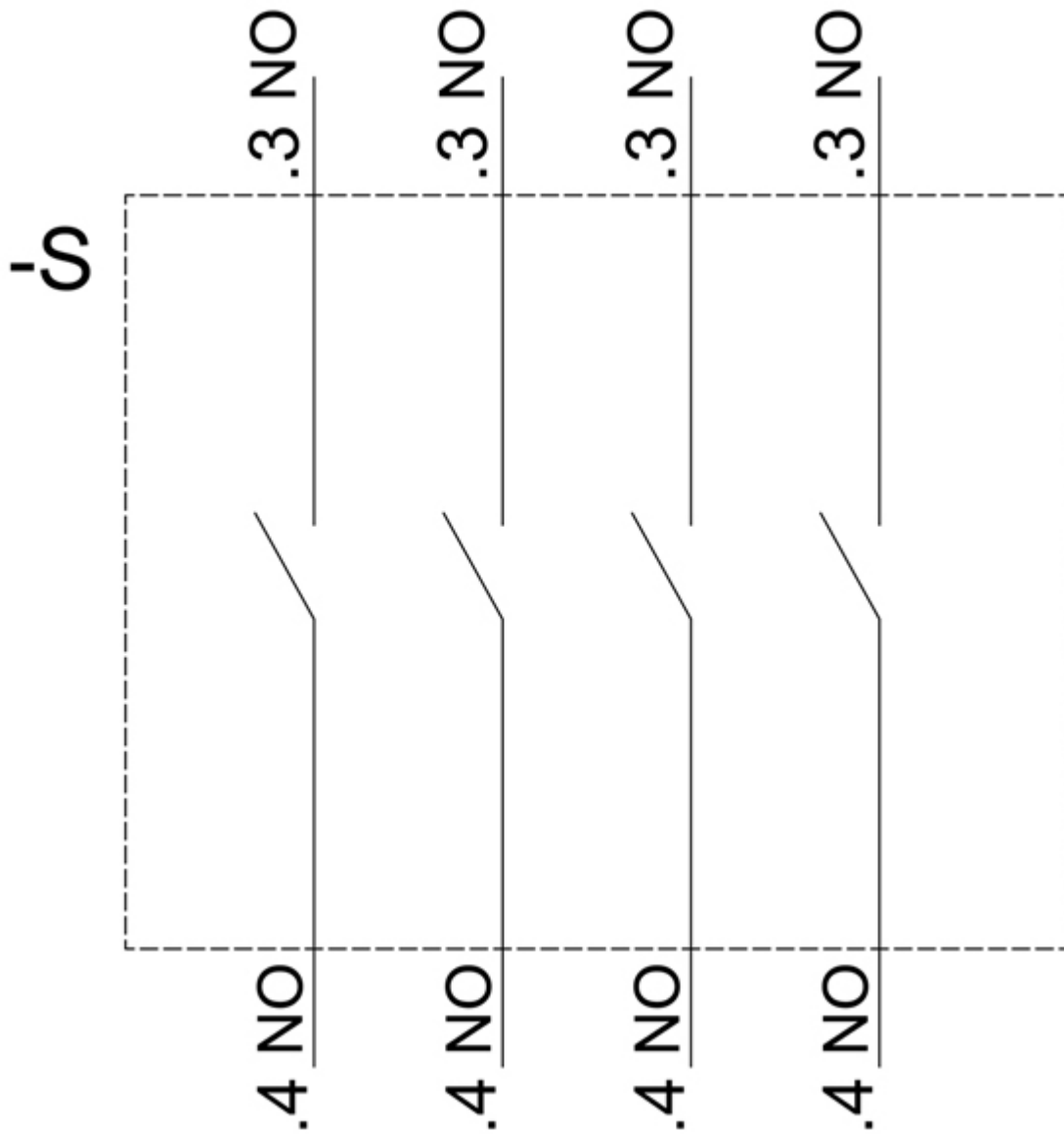
Service&Support (Manuals, Certificates, Characteristics, FAQs,...)

<https://support.industry.siemens.com/cs/ww/en/ps/3SU1150-7AE88-1QA0>

Image database (product images, 2D dimension drawings, 3D models, device circuit diagrams, EPLAN macros, ...)

[http://www.automation.siemens.com/bilddb/cax\\_de.aspx?mlfb=3SU1150-7AE88-1QA0&lang=en](http://www.automation.siemens.com/bilddb/cax_de.aspx?mlfb=3SU1150-7AE88-1QA0&lang=en)





last modified:

10/15/2020 