



Position switch in compact design 40 mm wide with connection cable 2 m  
Snap-action contacts 1 NO+1 NC Rounded plunger with central mounting

<b>product brand name</b>	SIRIUS
<b>product designation</b>	Mechanical position switches
<b>product type designation</b>	3SE5
suitability for use safety switch	Yes
<b>General technical data</b>	
product function positive opening	Yes
insulation voltage rated value	400 V
<b>degree of pollution</b>	3
<b>surge voltage resistance rated value</b>	4 kV
<b>protection class IP</b>	IP67
<b>shock resistance</b>	
• acc. to IEC 60068-2-27	30g / 11 ms
vibration resistance acc. to IEC 60068-2-6	0.35 mm/5g
mechanical service life (switching cycles) typical	10 000 000
electrical endurance (switching cycles) at AC-15 at 230 V typical	100 000
<b>electrical endurance (switching cycles) with contactor 3RH11, 3RT1016, 3RT1017, 3RT1024, 3RT1025, 3RT1026 typical</b>	500 000
<b>Electrical operating cycles in one hour with contactor 3RH11, 3RT1016, 3RT1017, 3RT1024, 3RT1025, 3RT1026</b>	1 800
<b>thermal current</b>	10 A
<b>material of the enclosure of the switch head</b>	metal
<b>reference code acc. to IEC 81346-2</b>	B
<b>active principle</b>	mechanical
<b>repeat accuracy</b>	0.05 mm
<b>minimum actuating force in directions of actuation</b>	20 N
<b>length of the sensor</b>	60 mm
<b>width of the sensor</b>	40 mm
<b>design of the switching contact</b>	mechanical
<b>operating frequency rated value</b>	50 ... 60 Hz
<b>number of NC contacts for auxiliary contacts</b>	1
<b>number of NO contacts for auxiliary contacts</b>	1
<b>operational current at AC-15</b>	
• at 125 V rated value	6 A
• at 230 V rated value	3 A
<b>operational current at DC-13</b>	
• at 125 V rated value	0.55 A

• at 230 V rated value	0.27 A	
design of the interface for safety-related communication	without	
<b>Enclosure</b>		
design of the housing	block	
material of the enclosure	metal	
coating of the enclosure	painted	
design of the housing acc. to standard	No	
material of cable sheath	PVC	
<b>Drive Head</b>		
design of the actuating element	rounded plunger	
shape of the switch head	rounded	
design of the switching function	snap-action contact	
circuit principle	snap-action contacts	
number of switching contacts safety-related	1	
<b>Connections/ Terminals</b>		
type of electrical connection	cable connection 5m x 0.75 mm <sup>2</sup> PVC	
<b>Communication/ Protocol</b>		
design of the interface	without	
<b>Ambient conditions</b>		
explosion protection category for dust	none	
<b>Installation/ mounting/ dimensions</b>		
mounting position	any	
fastening method	screw fixing	
<b>Certificates/ approvals</b>		
General Product Approval	Declaration of Conformity	other



[Miscellaneous](#)

[Confirmation](#)

#### Further information

Information- and Downloadcenter (Catalogs, Brochures,...)

<https://www.siemens.com/ic10>

Industry Mall (Online ordering system)

<https://mall.industry.siemens.com/mall/en/en/Catalog/product?mlfb=3SE5423-0CC21-1EA2>

Cax online generator

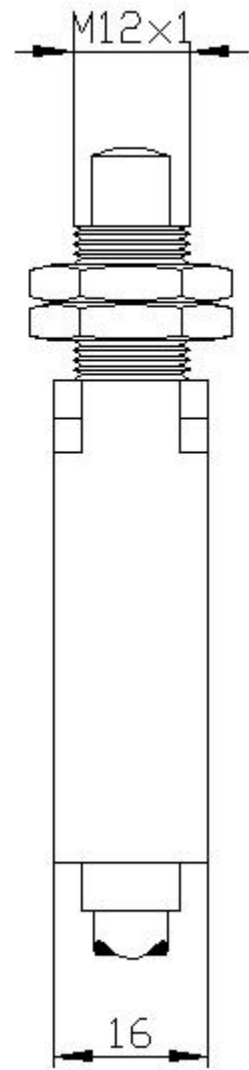
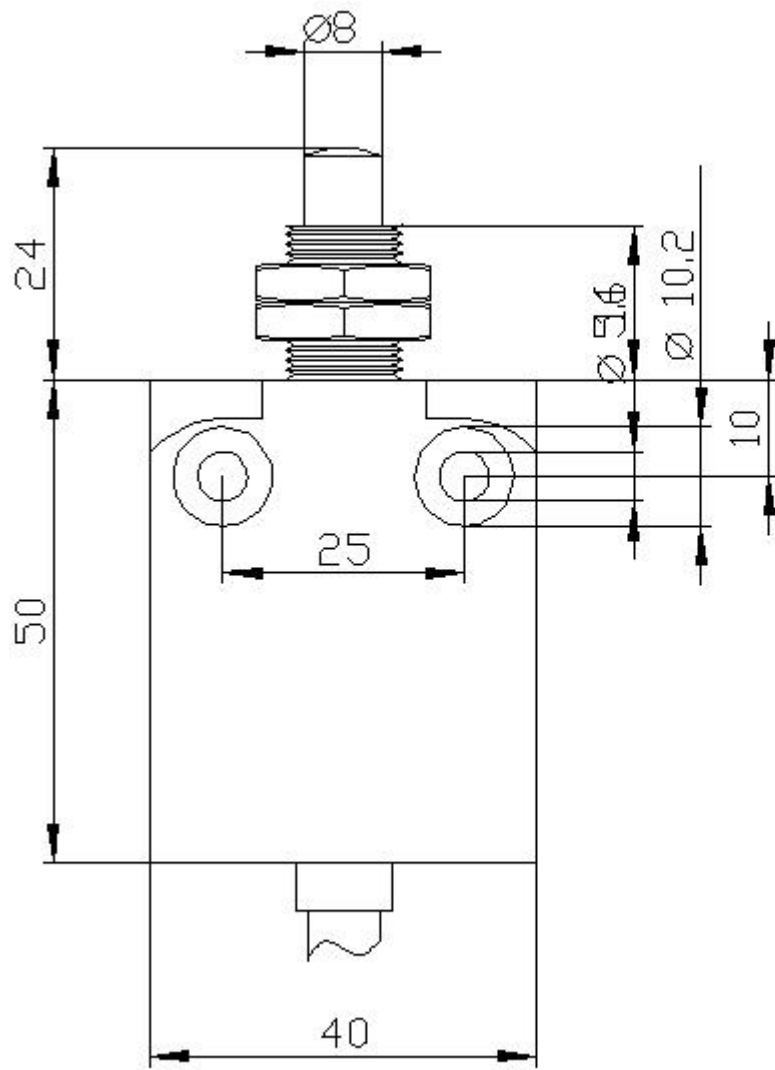
<http://support.automation.siemens.com/WW/CAXorder/default.aspx?lang=en&mlfb=3SE5423-0CC21-1EA2>

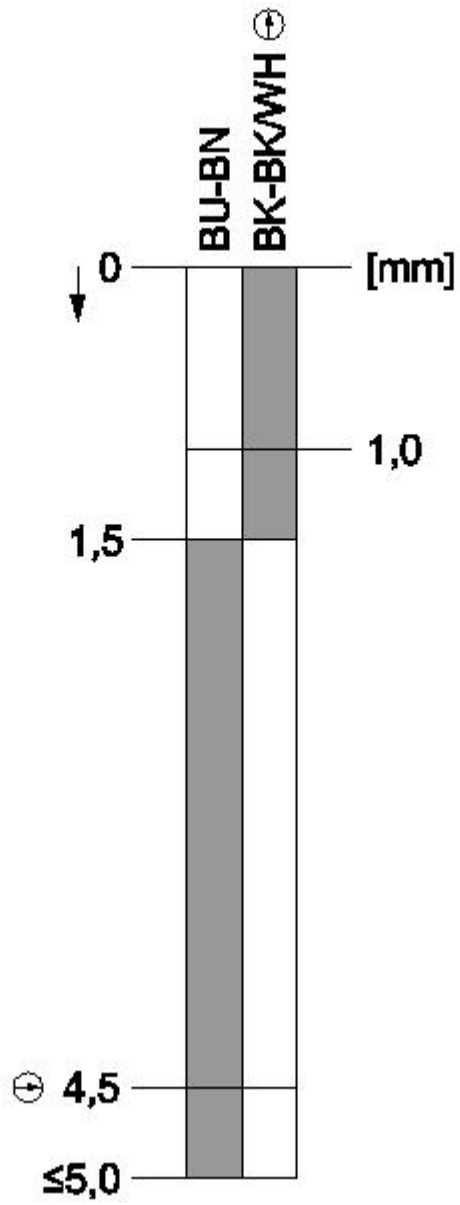
Service&Support (Manuals, Certificates, Characteristics, FAQs,...)

<https://support.industry.siemens.com/cs/ww/en/ps/3SE5423-0CC21-1EA2>

Image database (product images, 2D dimension drawings, 3D models, device circuit diagrams, EPLAN macros, ...)

[http://www.automation.siemens.com/bilddb/cax\\_de.aspx?mlfb=3SE5423-0CC21-1EA2&lang=en](http://www.automation.siemens.com/bilddb/cax_de.aspx?mlfb=3SE5423-0CC21-1EA2&lang=en)





last modified:

8/31/2020 