



distribution wire connector 6 cables 4 units accessory for: plug-in/draw-out unit 3VA6 400/600

Model	
product brand name	SETRON
product designation	accessories
Accessories	Wire connector
General technical data	
designation / of the terminal	TA2.7
Voltage	
Current	
Mechanical Design	
Connections according IEC	
IEC-marking / of terminals	1.5-35 mm <sup>2</sup> CU 4-35 mm <sup>2</sup> AL>NNL
connectable conductor cross-section	
<ul style="list-style-type: none"> <li>• for copper cable / stranded / minimum</li> <li>• for copper cable / stranded / maximum</li> <li>• for aluminum cable / solid / minimum</li> <li>• for aluminum cable / solid / maximum</li> <li>• for aluminum cable / stranded / minimum</li> <li>• for aluminum cable / stranded / maximum</li> </ul>	1.5 mm <sup>2</sup> 35 mm <sup>2</sup> 4 mm <sup>2</sup> 16 mm <sup>2</sup> 4 mm <sup>2</sup> 35 mm <sup>2</sup>
stripped length	18 / 34,5 mm
tightening torque / when using copper cables	
<ul style="list-style-type: none"> <li>• solid</li> </ul>	1.5 mm <sup>2</sup> : 2.8 Nm, 2.5 - 10 mm <sup>2</sup> : 6.2 Nm 16 mm <sup>2</sup> : 7 Nm
Connections according UL	
UL-marking / of terminals	TA2.7 CMC 14-2 CU7 12-2 AL7 UR CSA
permissible temperature / of connectable conductor / according to UL 486A-486B	75 °C
connectable conductor cross-section	
<ul style="list-style-type: none"> <li>• for copper cable / solid / minimum</li> <li>• for copper cable / solid / maximum</li> <li>• for copper cable / stranded / minimum</li> <li>• for copper cable / stranded / maximum</li> <li>• for copper cable / finely stranded / minimum</li> <li>• for copper cable / finely stranded / maximum</li> <li>• for aluminum cable / solid / minimum</li> <li>• for aluminum cable / solid / maximum</li> <li>• for aluminum cable / stranded / minimum</li> <li>• for aluminum cable / stranded / maximum</li> </ul>	14 AWG 10 AWG 14 AWG 2 AWG 14 AWG 2 AWG 12 AWG 10 AWG 12 AWG 2 AWG
tightening torque / when using copper cables	

- stranded
- finely stranded

14 - 8 AWG: 55 lb-in 6 - 2 AWG: 62 lb-in

14 - 8 AWG: 55 lb-in 6 - 2 AWG: 62 lb-in

## Certificates

General Product Approval	EMC	Declaration of Conformity	Shipping Approval
--------------------------	-----	---------------------------	-------------------



[Miscellaneous](#)



## other

[Manufacturer Declaration](#)

[Miscellaneous](#)

## Further information

**Information- and Downloadcenter (Catalogs, Brochures,...)**

<http://www.siemens.com/lowvoltage/catalogs>

**Industry Mall (Online ordering system)**

<https://mall.industry.siemens.com/mall/en/en/Catalog/product?mlfb=3VA9374-0JF60>

**Service&Support (Manuals, Certificates, Characteristics, FAQs,...)**

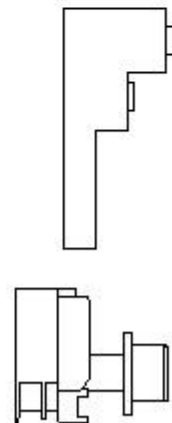
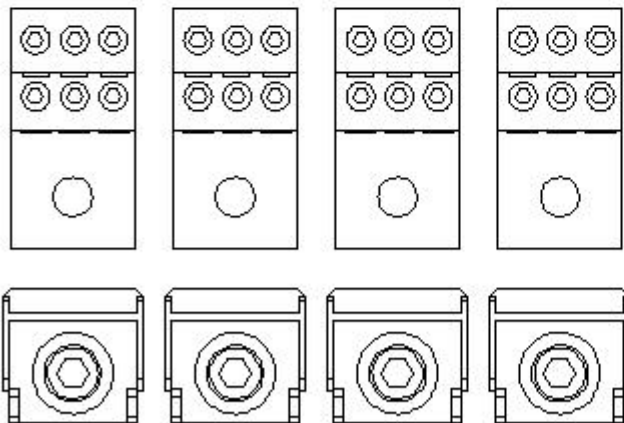
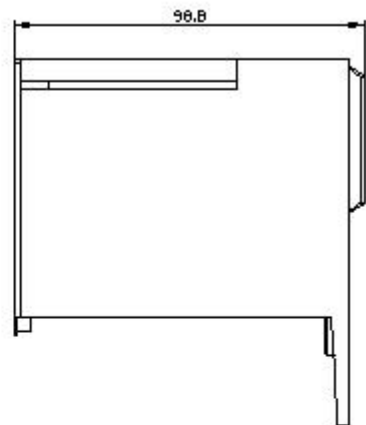
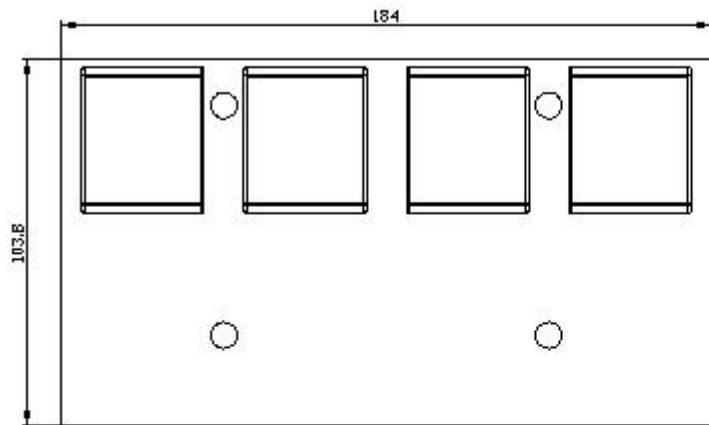
<https://support.industry.siemens.com/cs/ww/en/ps/3VA9374-0JF60>

**Image database (product images, 2D dimension drawings, 3D models, device circuit diagrams, ...)**

[http://www.automation.siemens.com/bilddb/cax\\_en.aspx?mlfb=3VA9374-0JF60](http://www.automation.siemens.com/bilddb/cax_en.aspx?mlfb=3VA9374-0JF60)

**Tender specifications**

<http://www.siemens.com/specifications>



last modified:

12/20/2020 