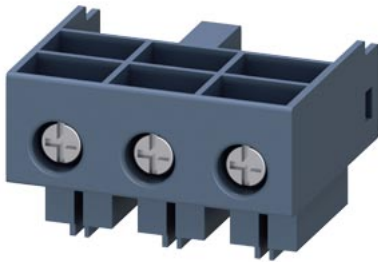


Main circuit terminals (input and output side) Connection main circuit: screw terminal 2 main circuit terminals per package (1 x input side 1 x output side differ)



General technical data		
product brand name		SIRIUS
product designation		main circuit terminals (ingoing as well as outgoing)
relative humidity during operation	%	10 ... 90
ambient temperature		
• during transport	°C	-55 ... +80
• during storage	°C	-55 ... +80
• during operation	°C	-20 ... +60
reference code acc. to DIN EN 61346-2		X
Installation/ mounting/ dimensions		
width	mm	45
height	mm	32
depth	mm	30
Connections/ Terminals		
stripped length	mm	10
type of electrical connection		
• for main current circuit		screw-type terminals
• for auxiliary and control circuit		screw-type terminals
type of connectable conductor cross-sections		
• for main contacts		
— solid		up to 12 A: 2x (1.5 ... 2.5 mm ²), 2x (2.5 ... 6 mm ²), up to 32 A: 2x (2.5 ... 6 mm ²)
— finely stranded with core end processing		up to 12 A: 2x (1.5 ... 2.5 mm ²), 2x (2.5 ... 6 mm ²) up to 32 A: 2x (2.5 ... 6 mm ²)
• at AWG cables for main contacts		up to 12 A: 2x (16 ... 14), 2x (14 ... 10), 1x 8, up to 32 A: 2x (14 ... 10), 1x 8
design of screw-type connection for auxiliary contacts		M6
tightening torque for auxiliary contacts with screw-type terminals	N·m	2 ... 2.5
Certificates/ approvals		
certificate of suitability		IEC / EN 60947-6-2
General Product Approval	EMC	Declaration of Conformity



[Miscellaneous](#)

Shipping Approval



other

[Confirmation](#)

Further information

Information- and Downloadcenter (Catalogs, Brochures,...)

<https://www.siemens.com/ic10>

Industry Mall (Online ordering system)

<https://mall.industry.siemens.com/mall/en/en/Catalog/product?mlfb=3RA6920-1A>

Cax online generator

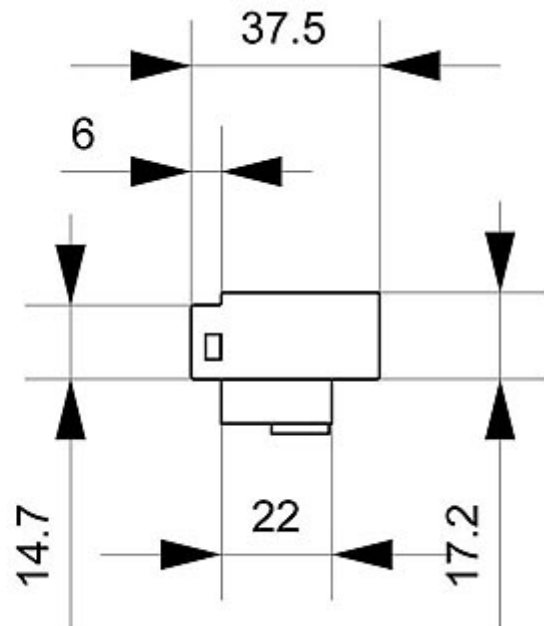
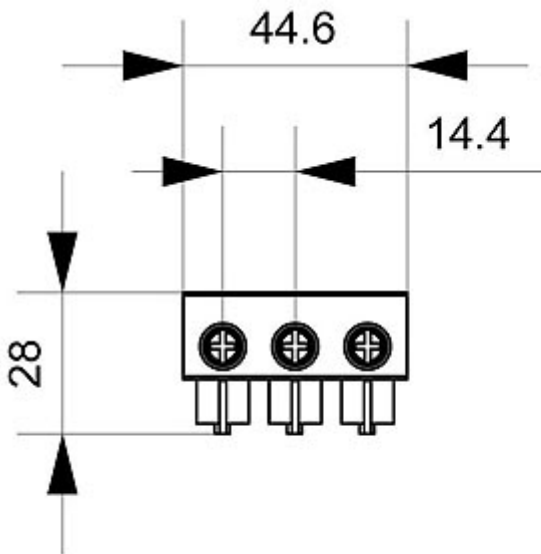
<http://support.automation.siemens.com/WW/CAXorder/default.aspx?lang=en&mlfb=3RA6920-1A>

Service&Support (Manuals, Certificates, Characteristics, FAQs,...)

<https://support.industry.siemens.com/cs/ww/en/ps/3RA6920-1A>

Image database (product images, 2D dimension drawings, 3D models, device circuit diagrams, EPLAN macros, ...)

http://www.automation.siemens.com/bilddb/cax_de.aspx?mlfb=3RA6920-1A&lang=en



last modified:

5/15/2020