



Magnet switch Contact block 25 x 88 mm for door hinge on the right  
Contact elements: Safety contacts 2 NC Signaling contact 1 NC With  
8 mm latching connection Connector 6-pole, without LED, the  
matching solenoid 3SE6714-2CA or offset by 90° 3SE6724-2CA

product brand name	SIRIUS
product designation	Magnetically operated switch
design of the product	Rectangular sensor unit
product type designation	3SE66
Suitability for use safety-related circuits	Yes

General technical data	
<ul style="list-style-type: none"> <li>product function positive opening</li> </ul>	No
<ul style="list-style-type: none"> <li>Product function control function for downstream devices</li> </ul>	No
<ul style="list-style-type: none"> <li>Product function cross-circuit/short-circuit recognition</li> </ul>	Yes
type of voltage of the operating voltage	DC
protection class IP	IP67
<ul style="list-style-type: none"> <li>shock resistance acc. to IEC 60068-2-27</li> </ul>	Sinusoidal half-wave 30g / 11 ms
vibration resistance	
<ul style="list-style-type: none"> <li>acc. to IEC 60068-2-6</li> </ul>	10 ... 55 Hz: 1 mm
reference code acc. to DIN EN 81346-2	S
type of voltage	DC
Height of the sensor	25 mm

<b>Length of the sensor</b>	13 mm
<b>Width of the sensor</b>	88 mm
<b>Material of the active sensor area</b>	Plastic, glass-fiber reinforced thermoplastic
<b>Mechanical installation condition for sensor</b>	can be installed almost flush
operating voltage rated value	30 V
<b>operating current rated value</b>	400 mA
Operating power rated value	10 W
<b>number of NC contacts for auxiliary contacts</b>	3
Number of NC contacts safety-related	2
<b>number of NO contacts for auxiliary contacts</b>	0
Number of NO contacts safety-related	0

#### Enclosure

<b>material of the enclosure</b>	Plastic, glass-fiber reinforced thermoplastic
<b>Opening direction of the door</b>	right

#### Actuator

<b>design of the operating mechanism</b>	magnet
--	--------

#### Contact

<b>Switching frequency</b>	5 Hz
<b>Safe operating distance OFF</b>	17 mm
<b>Safe operating distance ON</b>	7 mm
<b>design of the switching function</b>	NC contact
Number of switching contacts for signaling function	1
• safety-related	0

#### Connections/ Terminals

<b>type of electrical connection</b>	Latching connection 8 mm, 6-pole
--------------------------------------	----------------------------------

#### Safety related data

<b>B10 value</b>	
• with high demand rate acc. to SN 31920	12 500 000
<b>Safety Integrity Level (SIL) acc. to IEC 61508</b>	3
<b>performance level (PL) acc. to EN ISO 13849-1</b>	e
<b>proportion of dangerous failures</b>	
• with low demand rate acc. to SN 31920	50 %
• with high demand rate acc. to SN 31920	50 %
<b>T1 value for proof test interval or service life acc. to IEC 61508</b>	20 y
<b>category acc. to EN 954-1</b>	4

#### Inputs/ Outputs

• Number of semiconductor outputs for signaling function	0
• Number of semiconductor outputs safety-related	0

<b>Number of outputs as contact-affected switching element</b>	
<ul style="list-style-type: none"> <li>• as NC contact <ul style="list-style-type: none"> <li>— for signaling function instantaneous contact</li> <li>— safety-related instantaneous contact</li> </ul> </li> <li>• as NO contact <ul style="list-style-type: none"> <li>— safety-related instantaneous contact</li> </ul> </li> </ul>	1  2  0

<b>Display</b>	
<b>Evaluation version required</b>	yes

<b>Installation/ mounting/ dimensions</b>	
• mounting type	screw fixing

<b>Certificates/ approvals</b>			
<b>General Product Approval</b>	<b>EMC</b>	<b>Functional Safety/Safety of Machinery</b>	<b>other</b>



[Miscellaneous](#)

[Confirmation](#)

## Further information

**Information- and Downloadcenter (Catalogs, Brochures,...)**

<https://www.siemens.com/ic10>

**Industry Mall (Online ordering system)**

<https://mall.industry.siemens.com/mall/en/en/Catalog/product?mlfb=3SE6627-2CA01>

**Cax online generator**

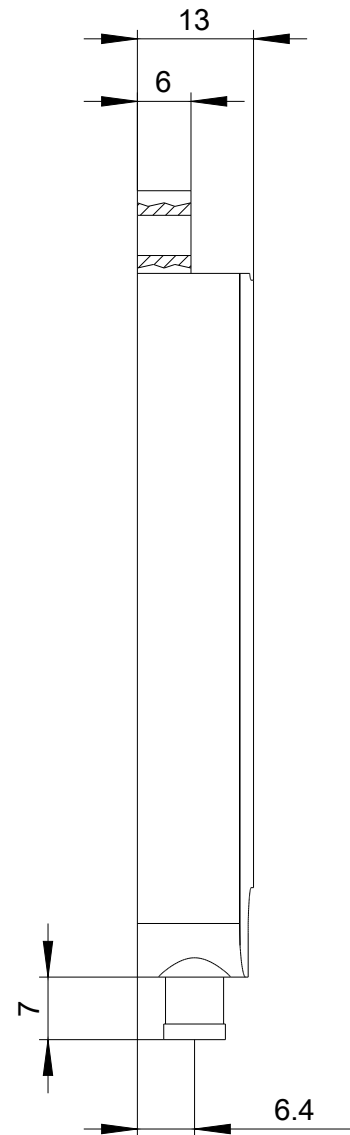
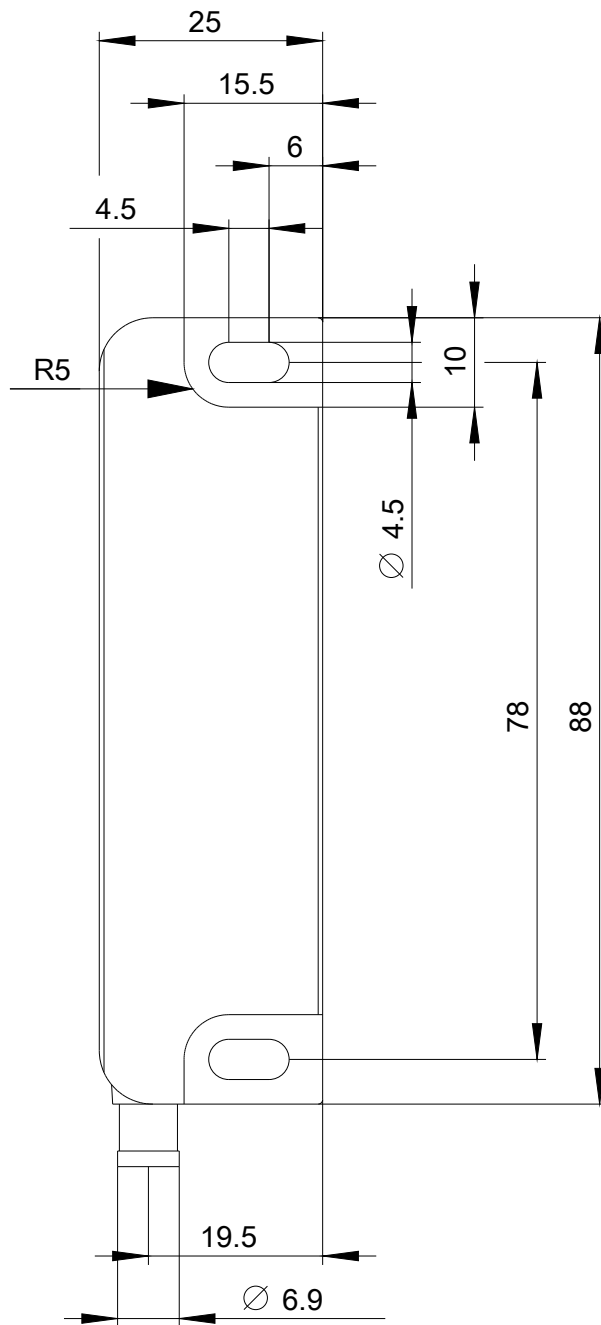
<http://support.automation.siemens.com/WW/CAXorder/default.aspx?lang=en&mlfb=3SE6627-2CA01>

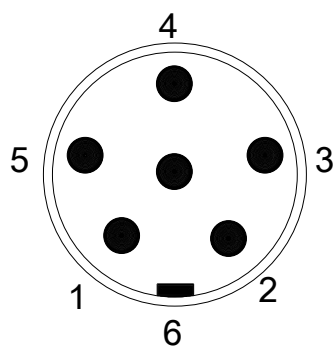
**Service&Support (Manuals, Certificates, Characteristics, FAQs,...)**

<https://support.industry.siemens.com/cs/ww/en/ps/3SE6627-2CA01>

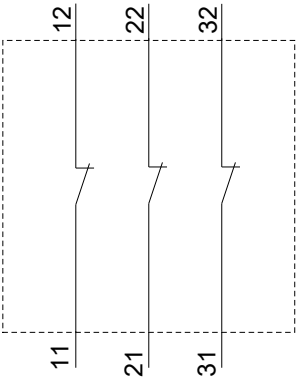
**Image database (product images, 2D dimension drawings, 3D models, device circuit diagrams, EPLAN macros, ...)**

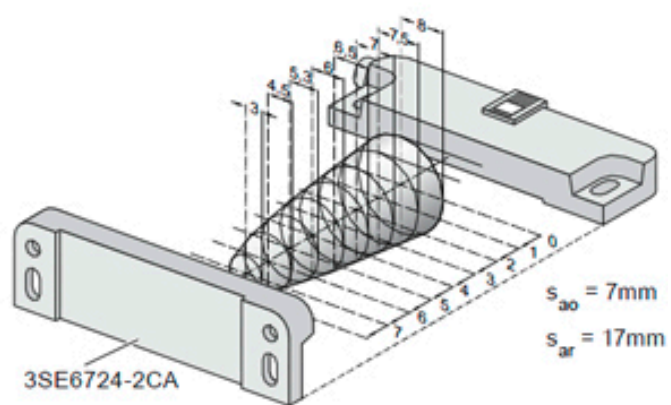
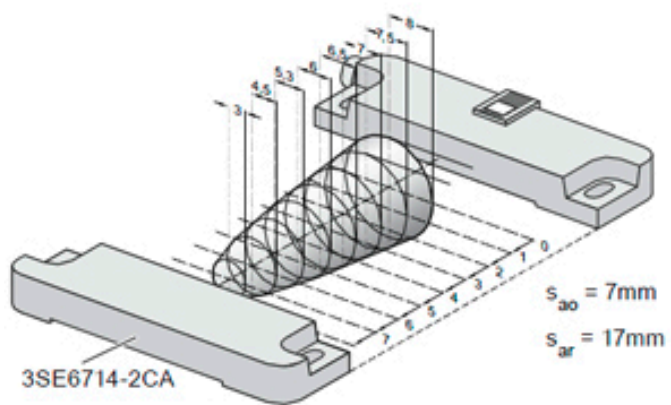
[http://www.automation.siemens.com/bilddb/cax\\_de.aspx?mlfb=3SE6627-2CA01&lang=en](http://www.automation.siemens.com/bilddb/cax_de.aspx?mlfb=3SE6627-2CA01&lang=en)





PIN 1	→	21
PIN 2	→	22
PIN 3	→	11
PIN 4	→	12
PIN 5	→	31
PIN 6	→	32





last modified:

08/19/2020