

NOTES:
FINISH — GRAY BAKED ENAMEL POWDER COAT PAINT OVER CLEANED GALVANNEALED STEEL.
UL LISTED — FILE E131840, VOL. M
SUITABLE FOR USE AS SERVICE EQUIPMENT.
MAIN HORIZONTAL CROSS BUS RATED AT 1200 AMPERES.
MAIN DEVICES ARE SEALABLE BY UTILITY.
GANGABLE MULTI-METERING EQUIPMENT IS DESIGNED FOR WALL MOUNTING ONLY.
(NOT SUITABLE FOR FLOOR STANDING EQUIPMENT.)
DOES NOT MEET EUSERC REQUIREMENTS.
NO USER CONFIGURATION REQUIRED FOR ERM FUNTION.
ERM SWITCH PROVIDED WITH LOCKABLE COVER.
ERM MODULE WIRING DIAGRAM AND REPLACEMENT PARTS PROVIDED ON ENCLOSURE DOOR

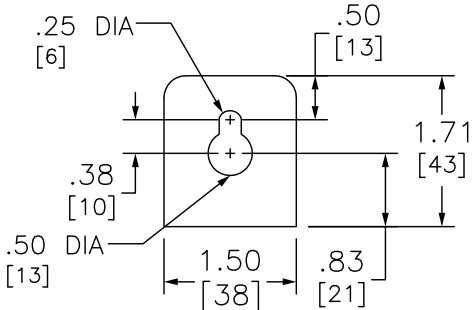
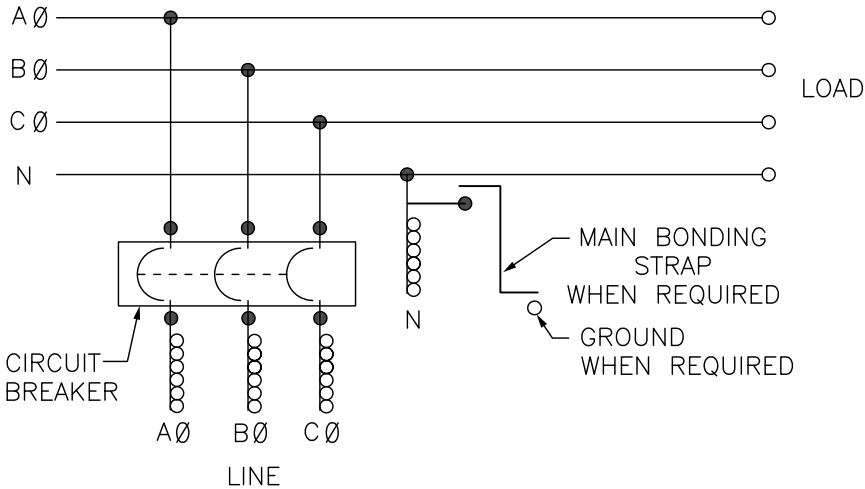
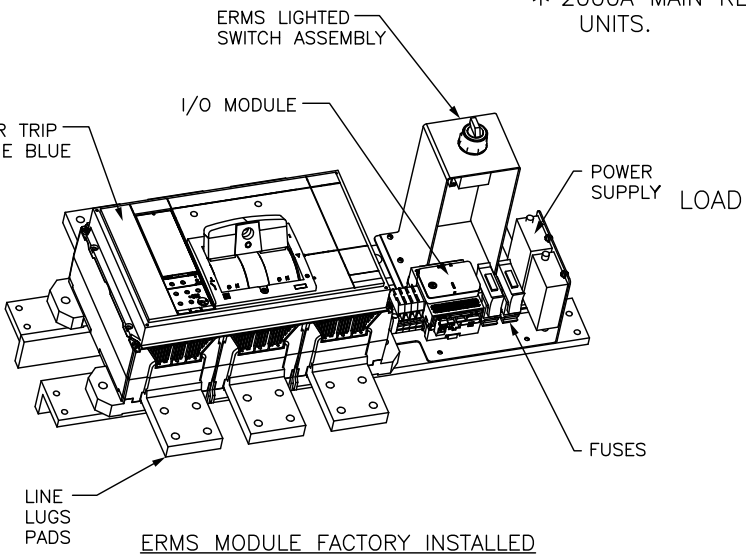
DUAL DIMENSIONS: INCHES
MILLIMETERS

THE FOLLOWING LUGS MAY BE INSTALLED ON THE LINE LUG PADS LUG QUANTITY PER LINE SIDE PHASE AND NEUTRAL TERMINALS (ORDER SEPARATELY)										
CATALOG NUMBER	ANDERSON				ILSCO			CMC		
	VHCL— 600— 12BN	VHCL— 750— 12BN	L1D2— 600	L1D2— 800	2ACL— 600	TA-600— 2N ▲	TA-800— 2N	A1B2— 600— 2	L1D2— 600	L1D2— 800
	250-600 CU	500-750 CU	#2-600 AL/CU	#300-750 AL/CU	250-600 AL/CU	#2-600 AL/CU	#300-750 AL/CU	#2-600 AL/CU	#2-600 AL/CU	#300-750 AL/CU
	VC-6 ‡	VC-7 ‡	MECH	MECH	IDT-12	MECH	MECH	MECH	MECH	MECH
EZM32000CBUMS	6	6	6	6	6	6	6	6	6	6

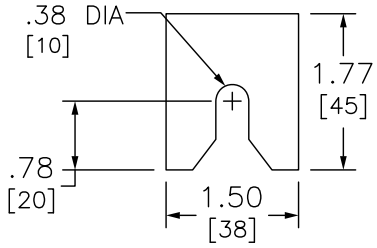
‡ INDICATED VERSA-CRIMP CRIMPING TOOL.
▲ THIS LUG IS AVAILABLE FROM SQUARE D COMPANY, ORDER CATALOG NUMBER CMEK4, KIT INCLUDES 4 LUGS

SYSTEM TYPE	MAIN RATING (AMPERES)	CATALOG NUMBER	MAIN CIRCUIT BREAKER (FACTORY INSTALLED)	GROUND LUG WIRE RANGE (FACTORY INSTALLED)
3Ø 4W 208Y/120VAC OR 240/120VAC DELTA	2000 ● *	EZM32000CBUMS	RJF36200U63AE1	(1) #6-300

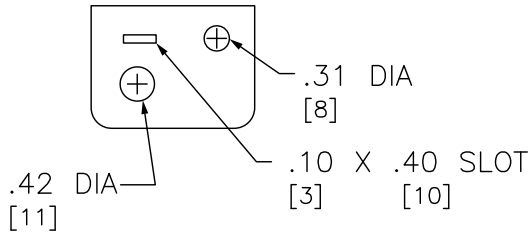
● 2000A MAIN CIRCUIT BREAKER DEVICE MUST BE CENTER MOUNTED.
* 2000A MAIN REQUIRES THE USE OF 1200A HORIZONTAL CROSS BUS ON THE BRANCH
UNITS.



TOP MOUNTING BRACKET



BOTTOM MOUNTING BRACKET



SEAL BRACKET

EZ METER-PAK GANGABLE
MULTI-METERING EQUIPMENT
2000A, 3PH 4W MAIN CIRCUIT BREAKER DEVICE
UNDERGROUND FEED ONLY
RAINPROOF NEMA TYPE 3R ENCLOSURE

SQUARE D™
by **Schneider Electric**

DWG# PWFDS-SYRS-0120
NO.