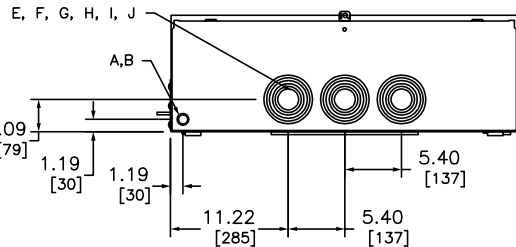
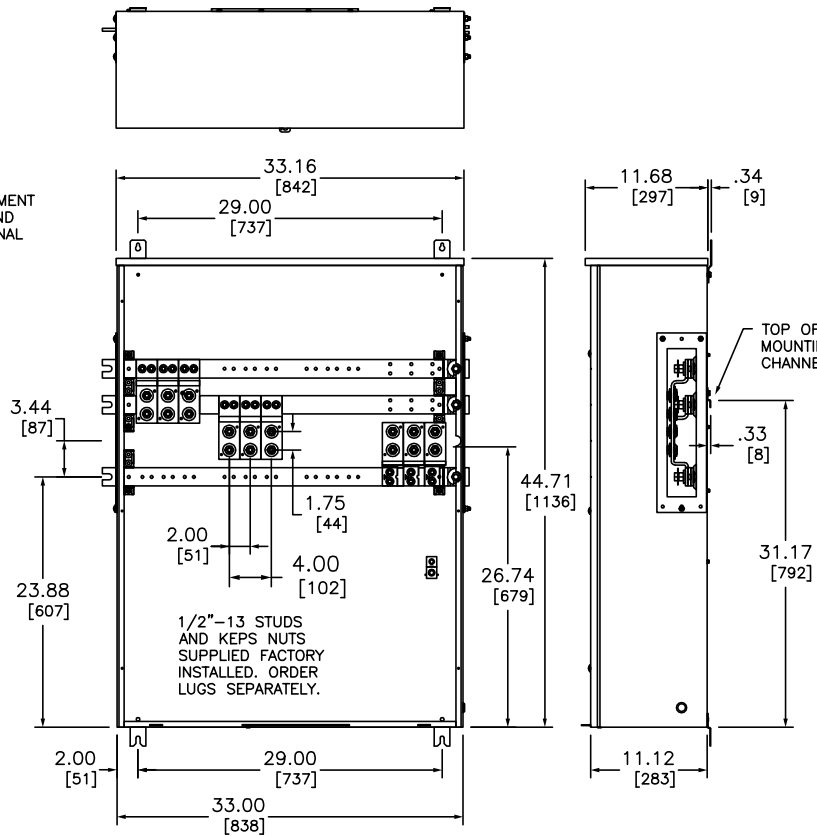


NOTE: SUPPLIED WITH ISOLATED NEUTRAL. NEUTRAL CANNOT BE BONDED.

KO	CONDUIT SIZE	KO DIA.
A	.50	.87
B	.75	1.12
F	1.50	2.00
F	2.00	2.50
G	2.50	3.00
H	3.00	3.62
I	3.50	4.12
J	4.00	4.62

FOR METERING EQUIPMENT SHORT CIRCUIT CURRENT RATINGS REFER TO SQUARE D DIGEST 173, PAGE 2-9.



EZM11200TBU

THE FOLLOWING LUGS MAY BE FIELD INSTALLED ON THE LUG LANDING PADS.

MANUFACTURER	CATALOG NUMBER	WIRE RANGE AWG/kcmil	TORQUE (LB-IN)
ANDERSON	VHCL-500-12BN	4/0 - 500 CU	N/A
	VHCL-600-12BN	250 - 600 CU	N/A
	VHCL-750-12BN	500 - 750 CU	N/A
	L1D2 - 600	#2 - 600 AL-CU	550
ILSCO	TA-600-2N	#2 - 600 AL-CU	375
	TA-800-2N	300 - 800 AL-CU	500
CMC	L1D2-800	300 - 800 AL-CU	550
	A1B2-600-2	#2 - 600 AL-CU	375
ANDERSON	L1D2 - 800	300 - 800 AL-CU	550
EQUIPMENT GROUND TERMINAL	SUPPLIED FACTORY INSTALLED	#6 - 300 AL-CU	275

1/2"-13 STUDS AND KEPS NUTS SUPPLIED AS MOUNTING HARDWARE FOR LUGS (ORDER LUGS SEPARATELY).

LUG KIT CATALOG NUMBER CMLK4 INCLUDES A QUANTITY OF (4) TA-600-2N, ILSCO LUGS AND IS AVAILABLE FROM SQUARE D.

TYPE VHCL ANDERSON VERSATILE LUGS REQUIRE THE USE OF ANDERSON VERSA-CRIMP TOOL VC6-FT, VC7-FT OR VC8.

SYSTEM TYPE (IN)	SERVICE PROVIDED (OUT)	MAIN BUS RATING	CATALOG NUMBER	EQUIPMENT GROUND WIRE RANGE
1PH-3W 120/240 VAC. MAX.	1PH-3W 120/240 VAC. MAX.	1200 A	EZM11200TBU	#6-300 KCMIL CU #6-300 KCMIL AU

EZ METER-PAK METERING EQUIPMENT
1200A TERMINAL BOX (UNDERGROUND ONLY)
1-PHASE, 3-WIRE, 120/240 VAC, NEMA TYPE 3R
ENCLOSURE, MEETS EUSERC REQUIREMENTS DRAWING 343



DWG# 3270
No.