

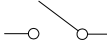
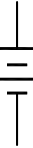



DRAWING GUIDE - Smart - UPS Li-Ion

Component /Detail	Description
Drawing Guide	Smart-UPS Li-Ion, Short Depth SMTL1000RM2UC 120VAC Drawing Guide
UPS Isometric View	Smart-UPS Li-Ion, Short Depth SMTL1000RM2UC 120VAC UPS Isometric View
UPS General Arrangement	Smart-UPS Li-Ion, Short Depth SMTL1000RM2UC 120VAC UPS General Arrangement
UPS Rear View	Smart-UPS Li-Ion, Short Depth SMTL1000RM2UC 120VAC UPS Rear View
System One Line Diagram	Smart-UPS Li-Ion, Short Depth SMTL1000RM2UC 120VAC System One Line Diagram

LEGEND			
SYMBOL	DESCRIPTION	SYMBOL	DESCRIPTION
	CIRCUIT BREAKER		DC-AC CONVERTER (INVERTER)
	RELAY		BATTERY
	GND		

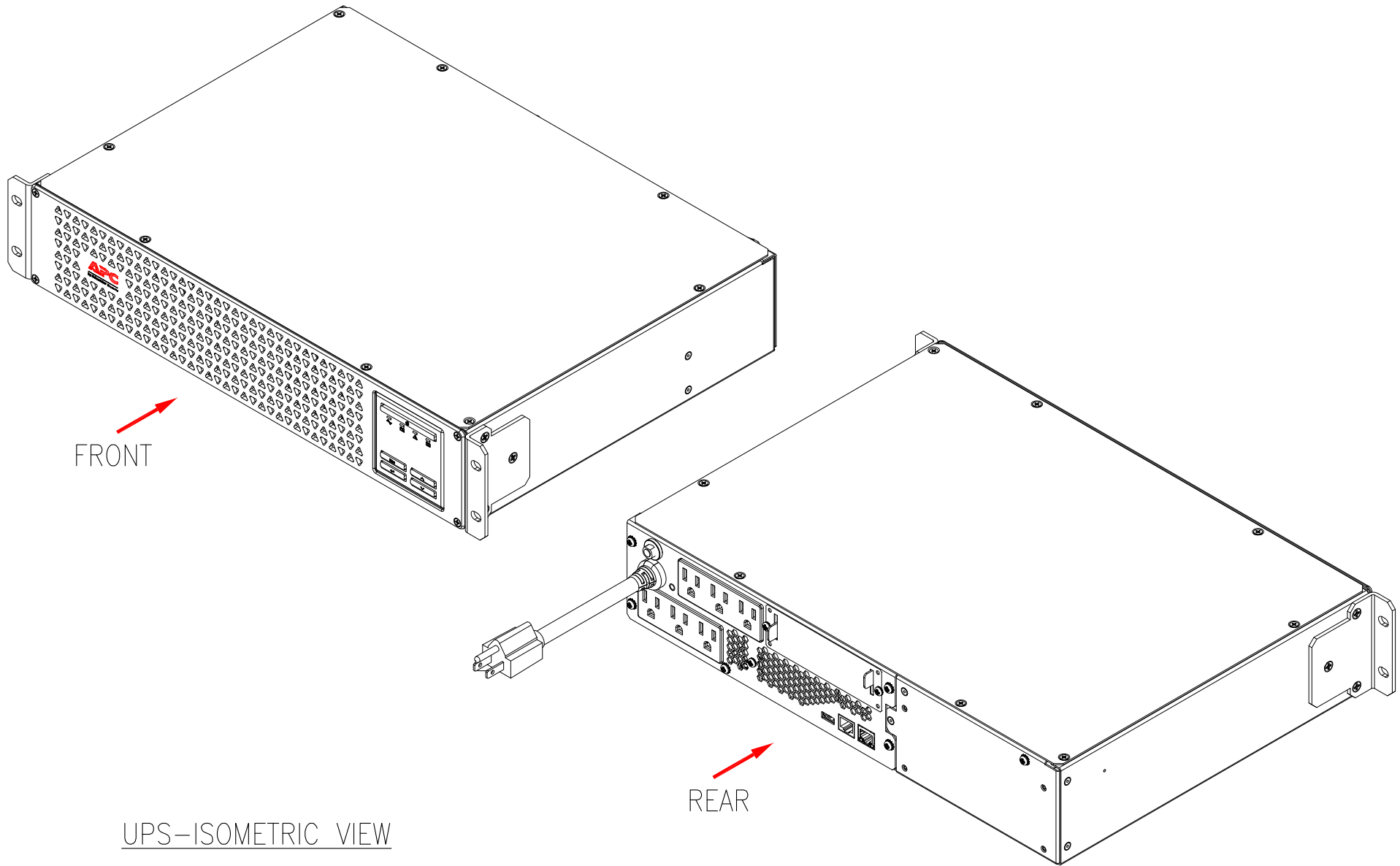
THIS DRAWING AND SPECIFICATIONS HEREIN ARE THE PROPERTY OF SCHNEIDER ELECTRIC AND SHALL NOT BE COPIED, REPRODUCED OR USED IN WHOLE OR IN PART, AS THE BASIS FOR THE MANUFACTURE OR SALE OF ITEMS WITHOUT WRITTEN PERMISSION FROM SCHNEIDER ELECTRIC. THIS DRAWING IS BASED UPON LATEST AVAILABLE INFORMATION AND IS SUBJECT TO CHANGE WITHOUT NOTICE.



TITLE: APC Smart-UPS Li-Ion
 Input: 120VAC, (L+N+G), 50/60Hz, 1PH, NEMA 5-15P
 UPS Output: 120VAC, (L+N+G), 50/60Hz, 1PH, (6)NEMA 5-15R
 SHORT DEPTH 1000VA UPS WITH SmartConnect
 DRAWING GUIDE

PROJECT: DRAWINGS **SHEET** 1 OF 5

DWG NO: SMTL1000RM2UC	REV. 0
DRAWN BY: JAYAPRAKASH	06-NOV-18
ENGINEER: JIM BRIGGS	09-NOV-18
APPROVED BY: JEFFREY AUGUST	09-NOV-18
ANGLE	PROJECTION
N.A.	N.A.



NOTES:

1. INSTALLATION SHALL COMPLY WITH ALL APPLICABLE NATIONAL, STATE AND LOCAL CODES.
2. REFER TO PRODUCT DOCUMENTATION FOR ADDITIONAL DETAILS PRIOR TO INSTALLATION AND SITE PREPARATION WORK.

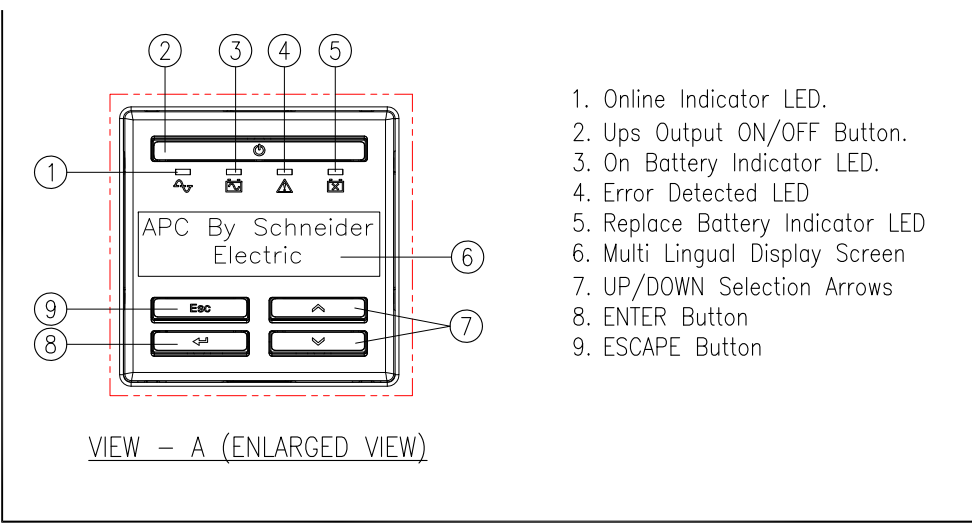
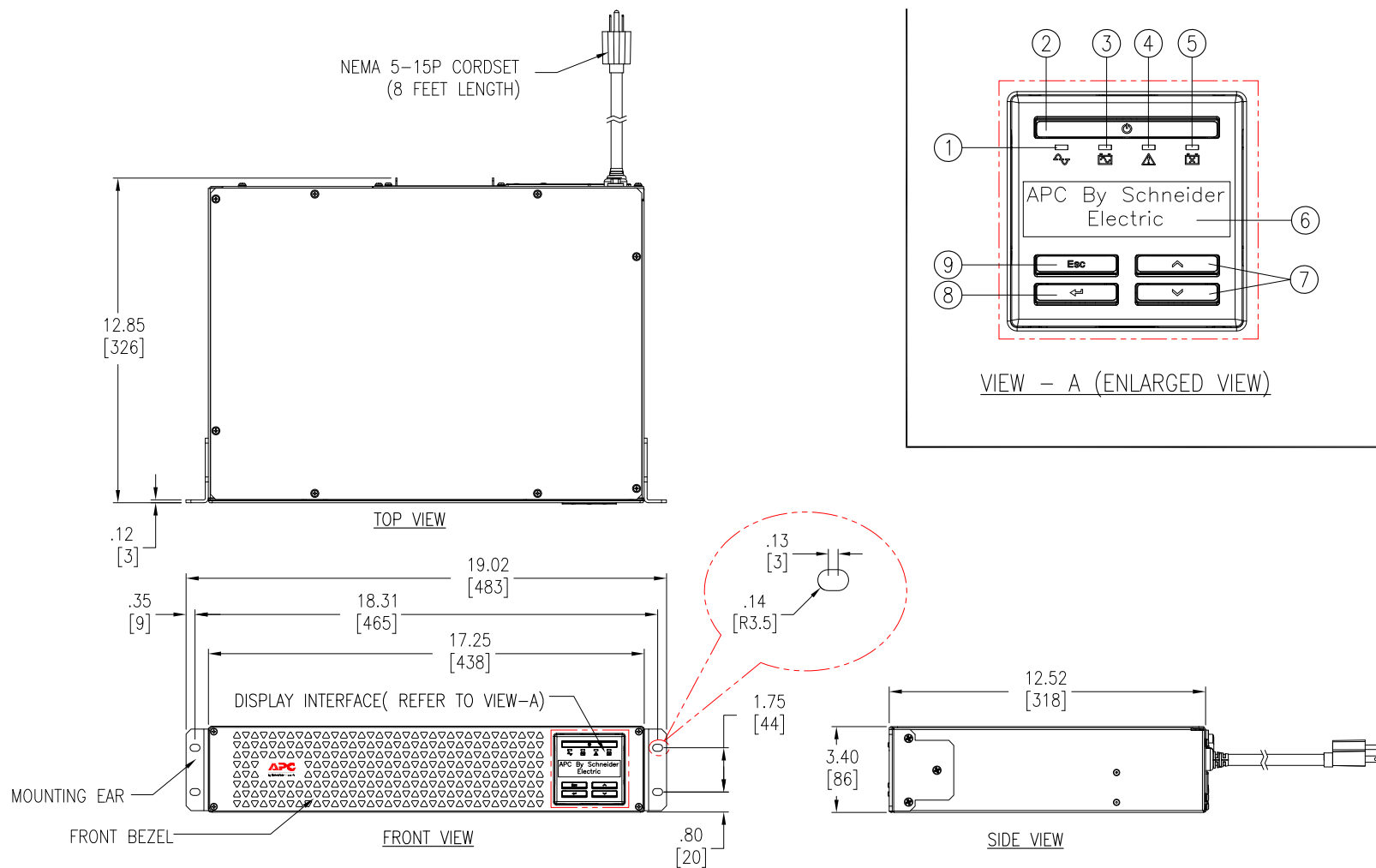
THIS DRAWING AND SPECIFICATIONS HEREIN ARE THE PROPERTY OF SCHNEIDER ELECTRIC AND SHALL NOT BE COPIED, REPRODUCED OR USED IN WHOLE OR IN PART, AS THE BASIS FOR THE MANUFACTURE OR SALE OF ITEMS WITHOUT WRITTEN PERMISSION FROM SCHNEIDER ELECTRIC. THIS DRAWING IS BASED UPON LATEST AVAILABLE INFORMATION AND IS SUBJECT TO CHANGE WITHOUT NOTICE.

Schneider
Electric

TITLE: APC Smart-UPS Li-Ion
Input: 120VAC, (L+N+G), 50/60Hz, 1PH, NEMA 5-15P
UPS Output: 120VAC, (L+N+G), 50/60Hz, 1PH, (6)NEMA 5-15R
SHORT DEPTH 1000VA UPS WITH SmartConnect
UPS-ISOMETRIC VIEW

PROJECT: DRAWINGS **SHEET** 2 OF 5

DWG NO: SMTL1000RM2UC	REV. 0
DRAWN BY: JAYAPRAKASH	06-NOV-18
ENGINEER: JIM BRIGGS	09-NOV-18
APPROVED BY: JEFFREY AUGUST	09-NOV-18
THIRD	ANGLE
PROJECTION	



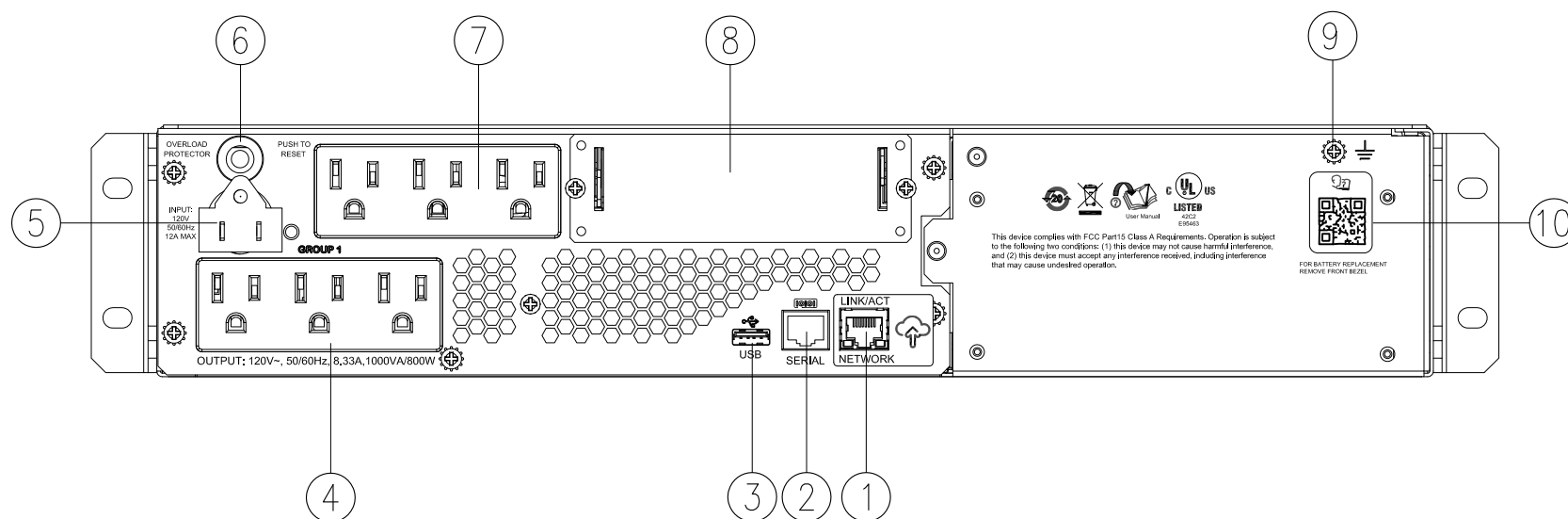
- NOTES:**
1. INSTALLATION SHALL COMPLY WITH ALL APPLICABLE NATIONAL, STATE AND LOCAL CODES.
 2. REFER TO PRODUCT DOCUMENTATION FOR ADDITIONAL DETAILS PRIOR TO INSTALLATION AND SITE PREPARATION WORK.
 3. ALL DIMENSIONS ARE IN INCHES [MILLIMETERS].
 4. CABLE ENTRY IS FROM REAR OF UNIT.
 5. WEIGHT OF UNIT IS 36 lb [16.3 kg].

THIS DRAWING AND SPECIFICATIONS HEREIN ARE THE PROPERTY OF SCHNEIDER ELECTRIC AND SHALL NOT BE COPIED, REPRODUCED OR USED IN WHOLE OR IN PART, AS THE BASIS FOR THE MANUFACTURE OR SALE OF ITEMS WITHOUT WRITTEN PERMISSION FROM SCHNEIDER ELECTRIC. THIS DRAWING IS BASED UPON LATEST AVAILABLE INFORMATION AND IS SUBJECT TO CHANGE WITHOUT NOTICE.

Schneider Electric

TITLE: APC Smart-UPS Li-Ion
Input: 120VAC, (L+N+G), 50/60Hz, 1PH, NEMA 5-15P
UPS Output: 120VAC, (L+N+G), 50/60Hz, 1PH, (6)NEMA 5-15R
SHORT DEPTH 1000VA UPS WITH SmartConnect
GENERAL ARRANGEMENT
PROJECT: DRAWINGS **SHEET** 3 OF 5

DWG NO: SMTL1000RM2UC **REV.** 0
DRAWN BY: JAYAPRAKASH **06-NOV-18** **THIRD**
ENGINEER: JIM BRIGGS **09-NOV-18** **ANGLE**
APPROVED BY: JEFFREY AUGUST **09-NOV-18** **PROJECTION**



REAR VIEW (ENLARGED)

1. APC SmartConnect Port
2. Serial Port
3. USB Port
4. Controlled Outlet Group 1 – NEMA 5–15R Outlets x (3)
5. UPS Input Power Cord (NEMA 5–15P Cordset)
6. Input Circuit Breaker
7. Main Outlet Group – NEMA 5–15R Outlets x (3)
8. Smart Slot
9. Chassis Ground Connection Screw
10. Link to online User Manual

NOTES:

1. INSTALLATION SHALL COMPLY WITH ALL APPLICABLE NATIONAL, STATE AND LOCAL CODES.
2. REFER TO PRODUCT DOCUMENTATION FOR ADDITIONAL DETAILS PRIOR TO INSTALLATION AND SITE PREPARATION WORK.

THIS DRAWING AND SPECIFICATIONS HEREIN ARE THE PROPERTY OF SCHNEIDER ELECTRIC AND SHALL NOT BE COPIED, REPRODUCED OR USED IN WHOLE OR IN PART, AS THE BASIS FOR THE MANUFACTURE OR SALE OF ITEMS WITHOUT WRITTEN PERMISSION FROM SCHNEIDER ELECTRIC. THIS DRAWING IS BASED UPON LATEST AVAILABLE INFORMATION AND IS SUBJECT TO CHANGE WITHOUT NOTICE.

Schneider
Electric

TITLE: APC Smart-UPS Li-Ion
Input: 120VAC, (L+N+G), 50/60Hz, 1PH, NEMA 5–15P
UPS Output: 120VAC, (L+N+G), 50/60Hz, 1PH, (6)NEMA 5–15R
SHORT DEPTH 1000VA UPS WITH SmartConnect
REAR VIEW

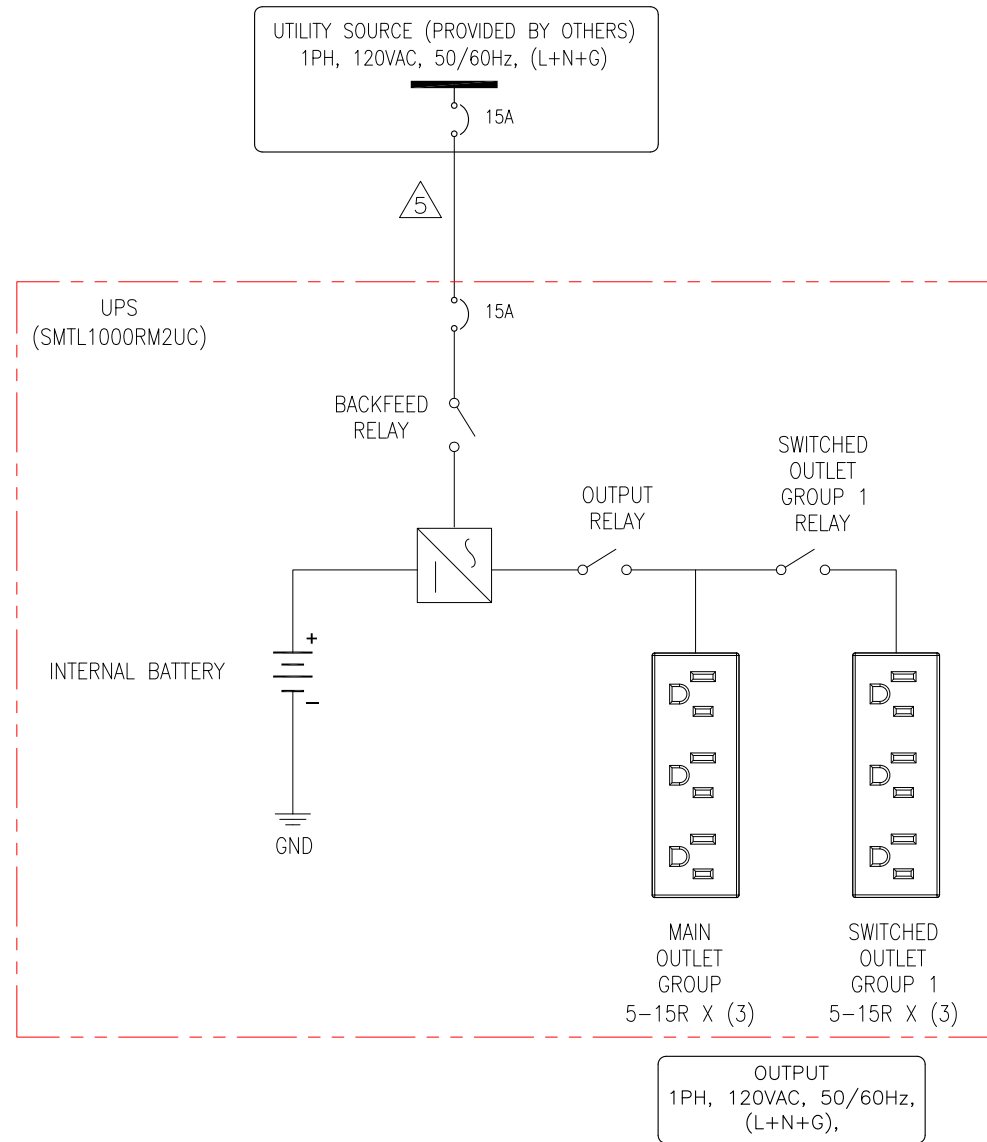
PROJECT: DRAWINGS **SHEET** 4 OF 5

DWG NO: SMTL1000RM2UC **REV.** 0

DRAWN BY: JAYAPRAKASH **06–NOV–18** **THIRD**

ENGINEER: JIM BRIGGS **09–NOV–18** **ANGLE**

APPROVED BY: JEFFREY AUGUST **09–NOV–18** **PROJECTION**



NOTES:

1. INSTALLATION SHALL COMPLY WITH ALL APPLICABLE NATIONAL, STATE AND LOCAL CODES.
2. REFER TO PRODUCT DOCUMENTATION FOR ADDITIONAL DETAILS PRIOR TO INSTALLATION AND SITE PREPARATION WORK.
3. DRAWING DEPICTS POWER SYSTEM CONNECTIONS AND IS NOT REPRESENTATIVE OF PHYSICAL LAYOUT. PLEASE REFER TO MECHANICAL DRAWINGS FOR MORE SPECIFIC PHYSICAL DATA.
4. UTILITY SOURCE MUST BE 1PH, 120VAC (L+N+G), 50/60Hz PROVIDED BY OTHERS.
- △5. CORDSET 8 FEET, NEMA 5-15P IS PART OF UPS.

THIS DRAWING AND SPECIFICATIONS HEREIN ARE THE PROPERTY OF SCHNEIDER ELECTRIC AND SHALL NOT BE COPIED, REPRODUCED OR USED IN WHOLE OR IN PART, AS THE BASIS FOR THE MANUFACTURE OR SALE OF ITEMS WITHOUT WRITTEN PERMISSION FROM SCHNEIDER ELECTRIC. THIS DRAWING IS BASED UPON LATEST AVAILABLE INFORMATION AND IS SUBJECT TO CHANGE WITHOUT NOTICE.

Schneider
Electric

TITLE: APC Smart-UPS Li-Ion
Input: 120VAC, (L+N+G), 50/60Hz, 1PH, NEMA 5-15P
UPS Output: 120VAC, (L+N+G), 50/60Hz, 1PH, (6)NEMA 5-15R
SHORT DEPTH 1000VA UPS WITH SmartConnect
SYSTEM ONLINE DIAGRAM

PROJECT: DRAWINGS **SHEET** 5 OF 5

DWG NO: SMTL1000RM2UC **REV.** 0

DRAWN BY: JAYAPRAKASH	06-NOV-18	ANGLE
ENGINEER: JIM BRIGGS	09-NOV-18	PROJECTION
APPROVED BY: JEFFREY AUGUST	09-NOV-18	N.A