



### Main

Range of Product	Modicon ABE7
Accessory / separate part designation	Splitter sub-base
Accessory / separate part type	Splitter sub-base
Accessory / separate part category	Connection accessories
Accessory / separate part destination	Connection sub-base
Number of Channels	16
Quantity per Set	Set of 1

### Complementary

Channel splitting	2 x 8
Net Weight	0.17 lb(US) (0.075 kg)

### Ordering and shipping details


Category	22375-INTERFACE MODULE(ABA,R,S)
Discount Schedule	CP2
GTIN	3389110544824
Returnability	No
Country of origin	LV

### Packing Units

Unit Type of Package 1	PCE
Number of Units in Package 1	1
Package 1 Height	2.28 in (5.8 cm)
Package 1 Width	3.07 in (7.8 cm)
Package 1 Length	2.17 in (5.5 cm)
Package 1 Weight	2.72 oz (77.0 g)
Unit Type of Package 2	S02
Number of Units in Package 2	30
Package 2 Height	11.81 in (30.0 cm)
Package 2 Width	11.81 in (30.0 cm)
Package 2 Length	15.75 in (40.0 cm)
Package 2 Weight	6.18 lb(US) (2.801 kg)

### Offer Sustainability

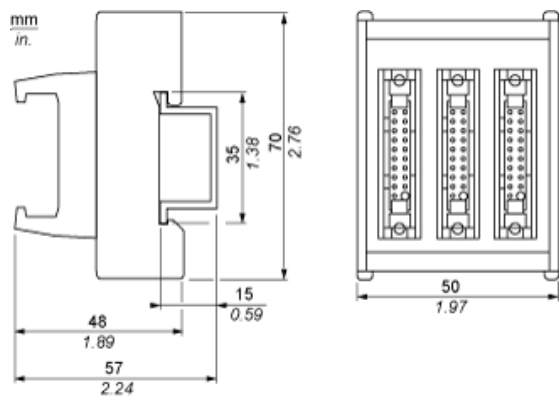
California proposition 65	WARNING: This product can expose you to chemicals including: Lead and lead compounds, which is known to the State of California to cause cancer and birth defects or other reproductive harm. For more information go to <a href="http://www.P65Warnings.ca.gov">www.P65Warnings.ca.gov</a>
RECh Regulation	<a href="#">RECh Declaration</a>
RECh free of SVHC	Yes
EU RoHS Directive	Pro-active compliance (Product out of EU RoHS legal scope)
Mercury free	Yes
China RoHS Regulation	<a href="#">China RoHS Declaration</a>

RoHS exemption information	 Yes
WEEE	The product must be disposed on European Union markets following specific waste collection and never end up in rubbish bins.

Contractual warranty

Warranty	18 months
----------	-----------

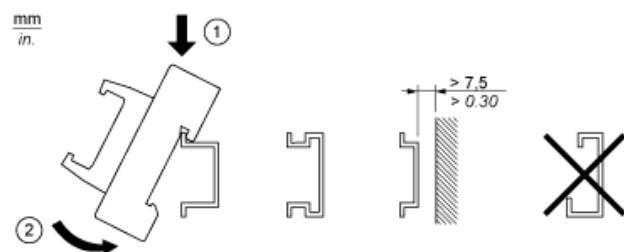
## Dimensions



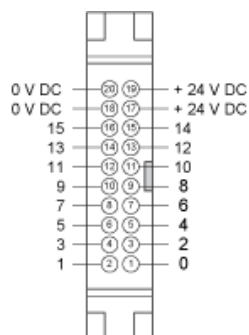
---

Mounting

---



## HE10 16 Channels



## Wiring Diagram

