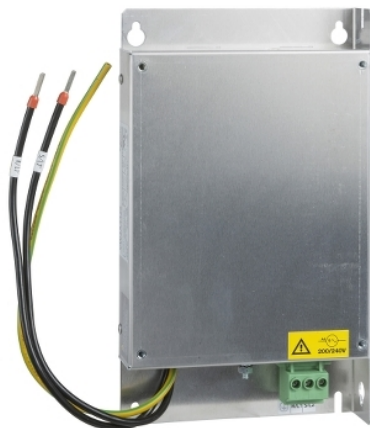


VW3A4420

EMC input filter, Altivar, Lexium, 10.1A, 1 phase, 200â€¦240V



Main

| | |
|------------------------------|---|
| Range of Product | Lexium Altivar |
| Product or Component Type | EMC input filter |
| Range Compatibility | Altivar 32 Altivar Machine ATV320 Lexium 28 Lexium 32 |
| Product compatibility | ATV32, 200...240 V, 0.18...0.75 kW LXM28A LXM32, single-phase, line current 2.9...5.4 A Variable speed drive ATV320...B 0.18 kW, 200...240 V, single phase Variable speed drive ATV320...B 0.37 kW, 200...240 V, single phase Variable speed drive ATV320...B 0.55 kW, 200...240 V, single phase Variable speed drive ATV320...B 0.75 kW, 200...240 V, single phase |
| Product Specific Application | Radio interference input filter |
| Mounting Location | At variable speed drive side |
| Phase | Single phase |

Complementary

| | |
|--|---|
| Maximum cable distance between devices | 65.62 Ft (20 m) IEC 61800-3 category C1 164.04 ft (50 m) IEC 61800-3 category C2 |
| Line Rated Current | 10.1 A |
| Thermal losses | 3.7 W |
| Network rated voltage | 200...240 V |
| Tolerance | - 15...10 % |
| Net Weight | 1.32 lb(US) (0.6 kg) |
| Emc filter compatibility | Type 020 |

Ordering and shipping details




| | |
|-------------------|--|
| Category | 22152-ATV320/ATV312/ATV32 (.25 THRU 7.5HP) |
| Discount Schedule | CP4B |
| GTIN | 3606480166877 |
| Returnability | No |
| Country of origin | TH |

Packing Units

| | |
|------------------------------|----------------------|
| Unit Type of Package 1 | PCE |
| Number of Units in Package 1 | 1 |
| Package 1 Height | 1.97 in (5.000 cm) |
| Package 1 Width | 7.17 in (18.200 cm) |
| Package 1 Length | 9.13 in (23.200 cm) |
| Package 1 Weight | 16.44 oz (466.000 g) |
| Unit Type of Package 2 | S03 |
| Number of Units in Package 2 | 11 |
| Package 2 Height | 11.81 in (30.000 cm) |
| Package 2 Width | 11.81 in (30.000 cm) |

| | |
|------------------------------|---------------------------|
| Package 2 Length | 15.75 in (40.000 cm) |
| Package 2 Weight | 12.67 lb(US) (5.748 kg) |
| Unit Type of Package 3 | P06 |
| Number of Units in Package 3 | 88 |
| Package 3 Height | 29.53 in (75.000 cm) |
| Package 3 Width | 23.62 in (60.000 cm) |
| Package 3 Length | 31.50 in (80.000 cm) |
| Package 3 Weight | 123.08 lb(US) (55.828 kg) |

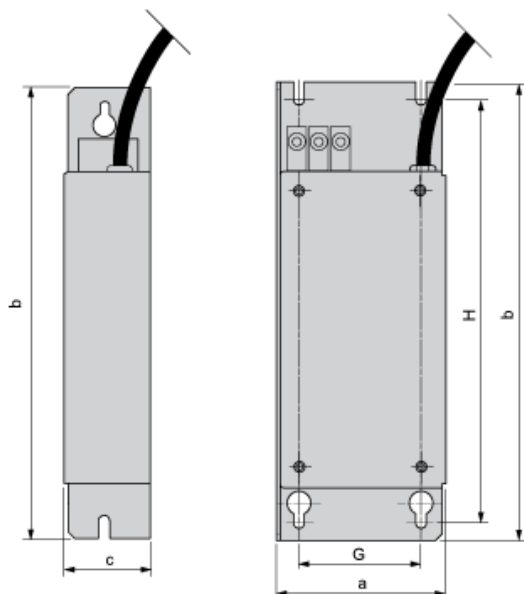
Offer Sustainability

| | |
|----------------------------|---|
| California proposition 65 | WARNING: This product can expose you to chemicals including: Lead and lead compounds, which is known to the State of California to cause cancer and birth defects or other reproductive harm. For more information go to www.P65Warnings.ca.gov |
| REACH Regulation |  REACH Declaration |
| REACH free of SVHC | Yes |
| EU RoHS Directive | Pro-active compliance (Product out of EU RoHS legal scope)  EU RoHS Declaration |
| Toxic heavy metal free | Yes |
| Mercury free | Yes |
| China RoHS Regulation |  China RoHS Declaration |
| RoHS exemption information |  Yes |

Contractual warranty

| | |
|----------|-----------|
| Warranty | 18 months |
|----------|-----------|

Additional EMC Input Filters



Dimensions in mm

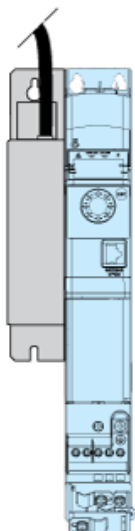
| a | b | c | G | H | Ø |
|----|-----|----|----|-----|-----|
| 72 | 195 | 37 | 52 | 180 | 4.5 |

Dimensions in in.

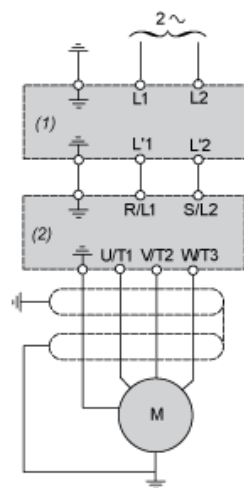
| a | b | c | G | H | Ø |
|------|------|------|------|------|------|
| 2.83 | 7.68 | 1.46 | 2.05 | 7.09 | 0.18 |

Mounting Recommendations

Mounting the Filter on the Side of the Drive



Recommended Schema



- (1) Filter
(2) Drive