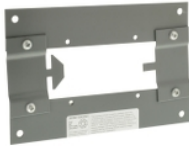


Main

Product	Wall flange
Range	I-Line



Complementary

Rated Operational Voltage	600 V AC/DC 50/60 Hz
Orientation	Vertical
Length	10 in (254.00 mm)
Width	7.34 in (186.44 mm)
For Use with	Busbar trunking 400 A aluminium/copper Busbar trunking 600 A copper

Environment

Standards	UL 857 CSA C22.2 No 27:1994 IEC 61439-6
-----------	---



Ordering and shipping details

Category	20199-WALL FLANGES/END CLOSURES
Discount Schedule	PE8
GTIN	785901060017
Returnability	Yes
Country of origin	US

Packing Units

Unit Type of Package 1	PCE
Number of Units in Package 1	1
Package 1 Weight	30.56 oz (866.361 g)

Offer Sustainability

Sustainable offer status	Green Premium product
California proposition 65	WARNING: This product can expose you to chemicals including: Nickel compounds, which is known to the State of California to cause cancer, and Bisphenol A (BPA), which is known to the State of California to cause birth defects or other reproductive harm. For more information go to www.P65Warnings.ca.gov
RECh Regulation	 RECh Declaration
RECh free of SVHC	Yes
EU RoHS Directive	Compliant  EU RoHS Declaration
Toxic heavy metal free	Yes

Mercury free	Yes
China RoHS Regulation	China RoHS Declaration
RoHS exemption information	Yes
Environmental Disclosure	Product Environmental Profile
PVC free	Yes
Contractual warranty	
Warranty	18 months