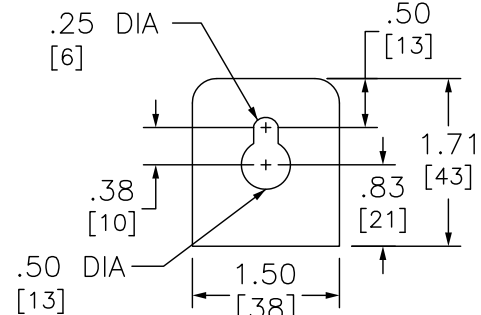
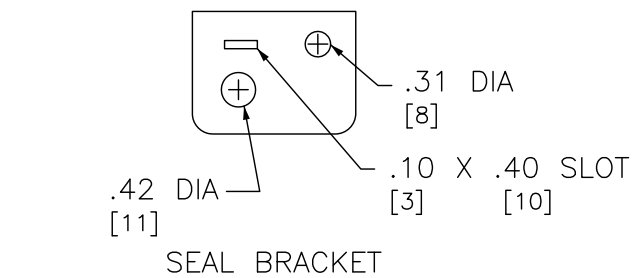
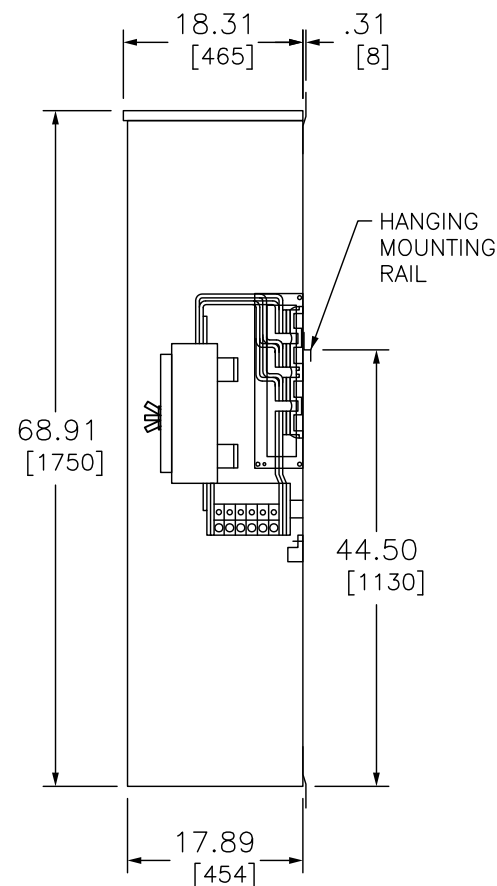


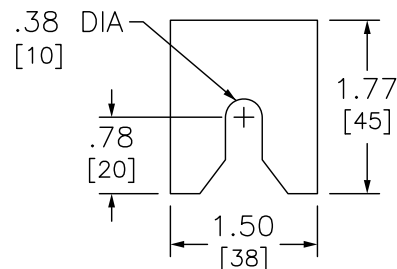
CLOSING PLATES SUPPLIED
FACTORY INSTALLED.
REMOVE PRIOR TO
CONNECTING BRANCH UNIT
AND REINSTALL AT END
OF LINE UP.

HORIZONTAL CROSS BUS
SYSTEM INCLUDES
EXCLUSIVE VISI-TITE
JOINT-NUTS TO MAKE
ALL PHASE AND NEUTRAL
CONNECTIONS BETWEEN
TWO EZM UNITS.

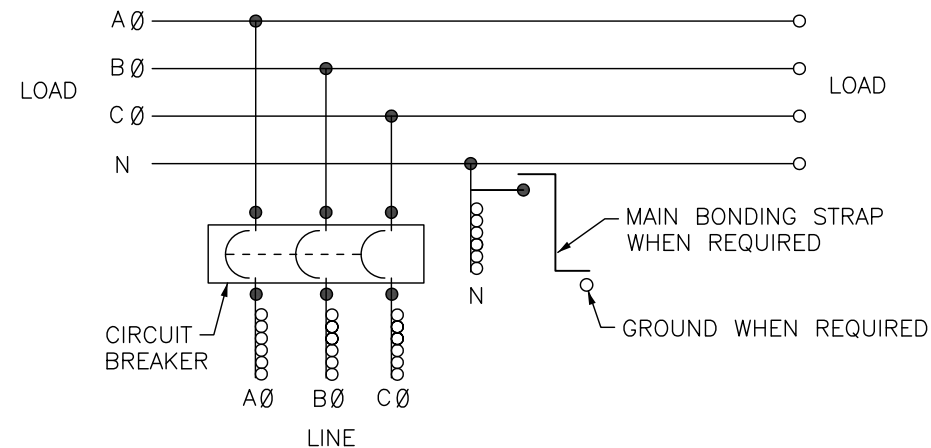
BONDING STRAP
SUPPLIED (FIELD
INSTALL WHEN USED
AS SERVICE EQUIPMENT)



TOP MOUNTING BRACKET



BOTTOM MOUNTING BRACKET



DUAL DIMENSIONS: INCHES
MILLIMETERS

ALTERNATE LUG QUANTITY PER LINE SIDE PHASE AND NEUTRAL TERMINALS (ORDER SEPARATELY)			
CATALOG NUMBER	ANDERSON		ILSCO
	VHCL- 600- 12BN	VHCL- 750- 12BN	2ACL- 600
	250-600 CU	500-750 CU	250-600 AL/CU
	VC-6±	VC-7±	IDT-12
EZM31600GCBC EZM31600JCBC	6	6	6

± INDICATED VERSA-CRIMP CRIMPING TOOL.

NO KNOCKOUTS PROVIDED

NOTES:
FINISH — GRAY BAKED ENAMEL POWDER COAT PAINT OVER CLEANED GALVANNEALED STEEL.
UL LISTED — FILE E131840, VOL. M
SUITABLE FOR USE AS SERVICE EQUIPMENT.
MAIN HORIZONTAL CROSS BUS RATED AT 1200 AMPERES.
MAIN DEVICES ARE SEALABLE BY UTILITY.
GANGABLE MULTI-METERING EQUIPMENT IS DESIGNED FOR WALL MOUNTING ONLY.
(NOT SUITABLE FOR FLOOR STANDING EQUIPMENT.)

SYSTEM TYPE	MAIN RATING (AMPERES)	CATALOG NUMBER	MAIN CIRCUIT BREAKER (FACTORY INSTALLED)	LINE SIDE PHASE LUG WIRE RANGE FOR AL OR CU CONDUCTORS (SUPPLIED WITH BREAKER)	LINE SIDE NEUTRAL LUG WIRE RANGE FOR AL OR CU CONDUCTORS (FACTORY INSTALLED)	GROUND LUG WIRE RANGE (FACTORY INSTALLED)
3Ø 4W 208Y/120VAC OR 240/120VAC DELTA	1600 ●	EZM31600GCBC EZM31600JCBC	RGF36160U31A RJF36160U31A	(6) 1/0-750 OR (12) 1/0-250	(6) 1/0-750 OR (12) 1/0-250	(1) #6-300

● 1600A MAIN CIRCUIT BREAKER DEVICE MUST BE CENTER MOUNTED.

EZ METER-PAK GANGABLE
MULTI-METERING EQUIPMENT
1600A, 3PH 4W MAIN CIRCUIT BREAKER DEVICE
OVERHEAD/UNDERGROUND FEED
RAINPROOF NEMA TYPE 3R ENCLOSURE

SQUARE D
by **Schneider Electric**

DWG# PWFDS-SYTI-0007
NO.