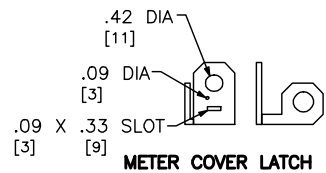


KNOCKOUTS				
SYMBOL	CONDUIT SIZE		HOLE DIA	
	IN	MM	IN	MM
A	.50	13	.87	22
B	.75	19	1.12	28
C	1.00	25	1.37	35
D	1.25	32	1.75	44
E	1.50	38	2.00	51
F	2.00	51	2.50	64
G	2.50	64	3.00	76
H	3.00	76	3.62	92

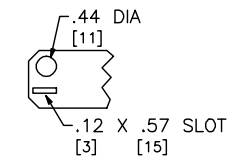


DUAL DIMENSIONS: INCHES  
MILLIMETERS

TWO SINGLE POLE, ONE PLUG-ON SPACE TYPE HOMT OR ONE SINGLE POLE TYPE HOM. TWO POLE TYPE HOMT, HOM OR HOMA (125A MAX) MAY PLUG ON TWO ADJACENT SPACES. TWO POLE HOMA (150-200A) MAY PLUG ON FOUR ADJACENT SPACES.

TOTAL CIRCUIT BREAKER HANDLE RATING NOT TO EXCEED 160A PER CIRCUIT CONNECTOR.

A SQUARE D UL LISTED SECONDARY SURGE ARRESTER MAY PLUG ON TWO ADJACENT SPACES. ORDER CATALOG NO HOM2175SB.

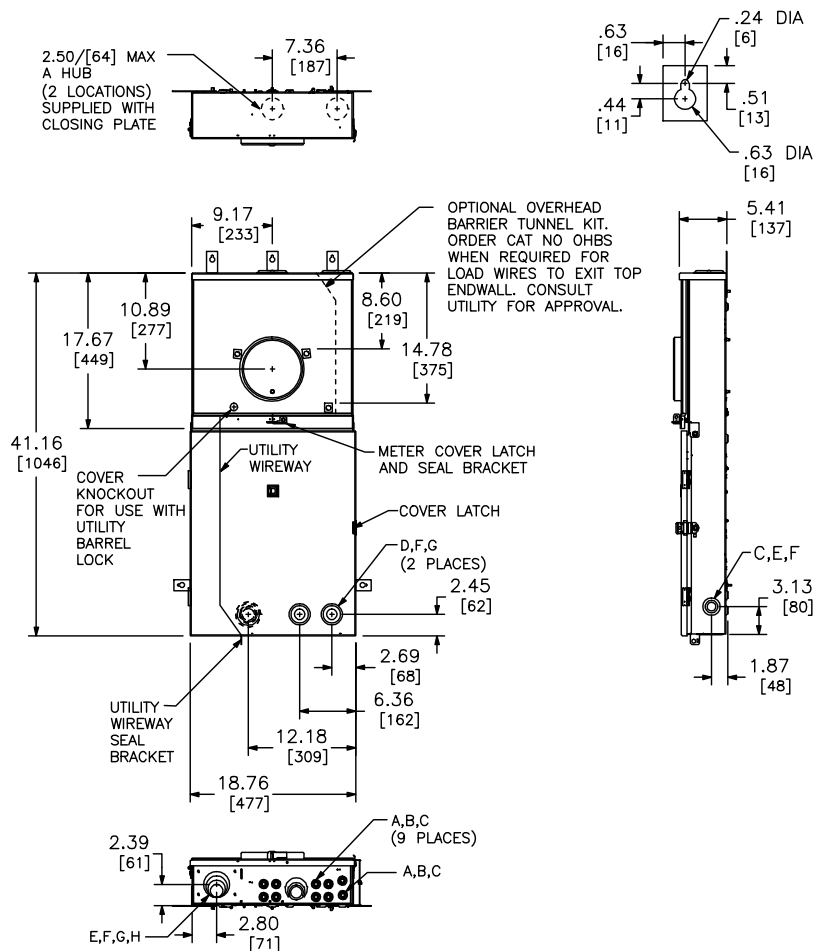


MAINS AMPERE RATING	FACTORY INSTALLED BYPASS TYPE	SHORT CIRCUIT CURRENT RATING	CATALOG NUMBER	SERIES	SPACES	MAXIMUM NUMBER OF SINGLE POLE HOM CIRCUITS	LINE SIDE PHASE & NEUTRAL LUGS AWG/KCMIL	SERVICE GROUND LUG AWG/KCMIL
125	HORN	22K	RC2040M125SH	M01	20	40	#6-350 CU/AL	#14-2/0 CU #12/2/0 AL
150	HORN		RC2040M150SH RC2040M150SHS					
200	HORN		RC2040M200SH RC2040M200SHS					
	NONE		RC2040M200S RC2040M200SS					

COMBINATION SERVICE ENTRANCE DEVICES  
RINGLESS ALL-IN-ONE HOMELINE 20-40 CIRCUIT  
RAINPROOF NEMA TYPE 3R ENCLOSURE  
SURFACE MOUNT ONLY



DWG# PWFDS-SYRS-0042  
NO.



NOTES:  
FINISH - GRAY BAKED ENAMEL POWDER COAT PAINT OVER CLEANED GALVANNEALED STEEL.  
MAXIMUM SYSTEM VOLTAGE: 120/240VAC, 1Ø3W, 50-60HZ, 208Y/120VAC, 1Ø3W, 50-60HZ (FROM A 3Ø4W SYSTEM)  
UL LISTED - FILE E-6294, VOL M  
SUITABLE ONLY FOR USE AS SERVICE EQUIPMENT.  
SUITABLE FOR UNDERGROUND/OVERHEAD SERVICE.