

XSZB112

Inductive proximity sensors XS, accessory for sensor, Ø 12 mm, fixing clamp with indexing, plastic



Main

Range of Product	Telemecanique Inductive proximity sensors XS
Accessory / separate part category	Mounting and fixing accessories
Accessory / Separate Part Type	Fixing clamp
Accessory / separate part designation	Fixing clamp
Accessory / separate part destination	Cylindrical M12 sensor
Material	Plastic

Complementary

Product Compatibility	XT cylindrical M12 XS cylindrical M12
Product Weight	0.01 lb(US) (0.006 kg)

Ordering and shipping details

Category	22499-SENSORS ACCESSORIES
Discount Schedule	DS2
GTIN	3389110914030
Returnability	Yes
Country of origin	FR

Packing Units

Unit Type of Package 1	PCE
Number of Units in Package 1	1
Package 1 Height	0.79 in (2.0 cm)
Package 1 Width	1.77 in (4.5 cm)
Package 1 Length	1.18 in (3.0 cm)
Package 1 Weight	0.28 oz (8.0 g)
Unit Type of Package 2	S01
Number of Units in Package 2	100
Package 2 Height	5.91 in (15.0 cm)
Package 2 Width	5.91 in (15.0 cm)
Package 2 Length	15.75 in (40.0 cm)
Package 2 Weight	2.30 lb(US) (1.045 kg)

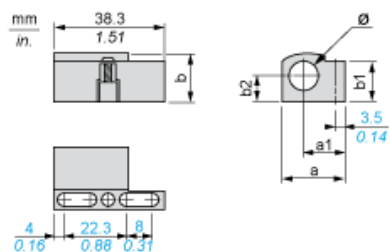
Offer Sustainability

Sustainable offer status	Green Premium product
California proposition 65	WARNING: This product can expose you to chemicals including: Diisononyl phthalate (DINP), which is known to the State of California to cause cancer, and Di-isodecyl phthalate (DIDP), which is known to the State of California to cause birth defects or other reproductive harm. For more information go to www.P65Warnings.ca.gov
REACH Regulation	REACH Declaration
EU RoHS Directive	Pro-active compliance (Product out of EU RoHS legal scope) EU RoHS Declaration
Mercury free	Yes
RoHS exemption information	Yes
Environmental Disclosure	Product Environmental Profile
Circularity Profile	End Of Life Information

Contractual warranty

Warranty	18 months
----------	-----------

Dimensions



Dimensions in mm

a	a1	b	b1	b2	Ø
21.9	14.5	16	15.5	8.5	12

Dimensions in in.

a	a1	b	b1	b2	Ø
0.86	0.57	0.63	0.61	0.33	0.47