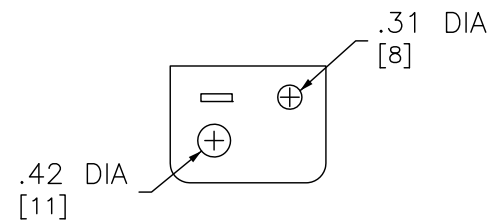
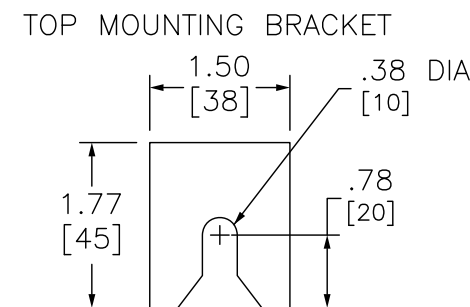
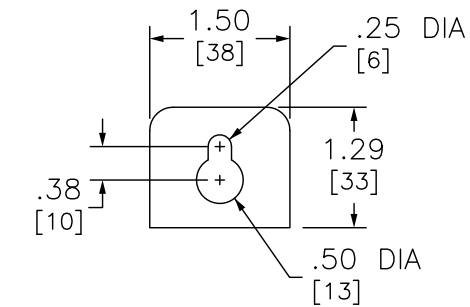
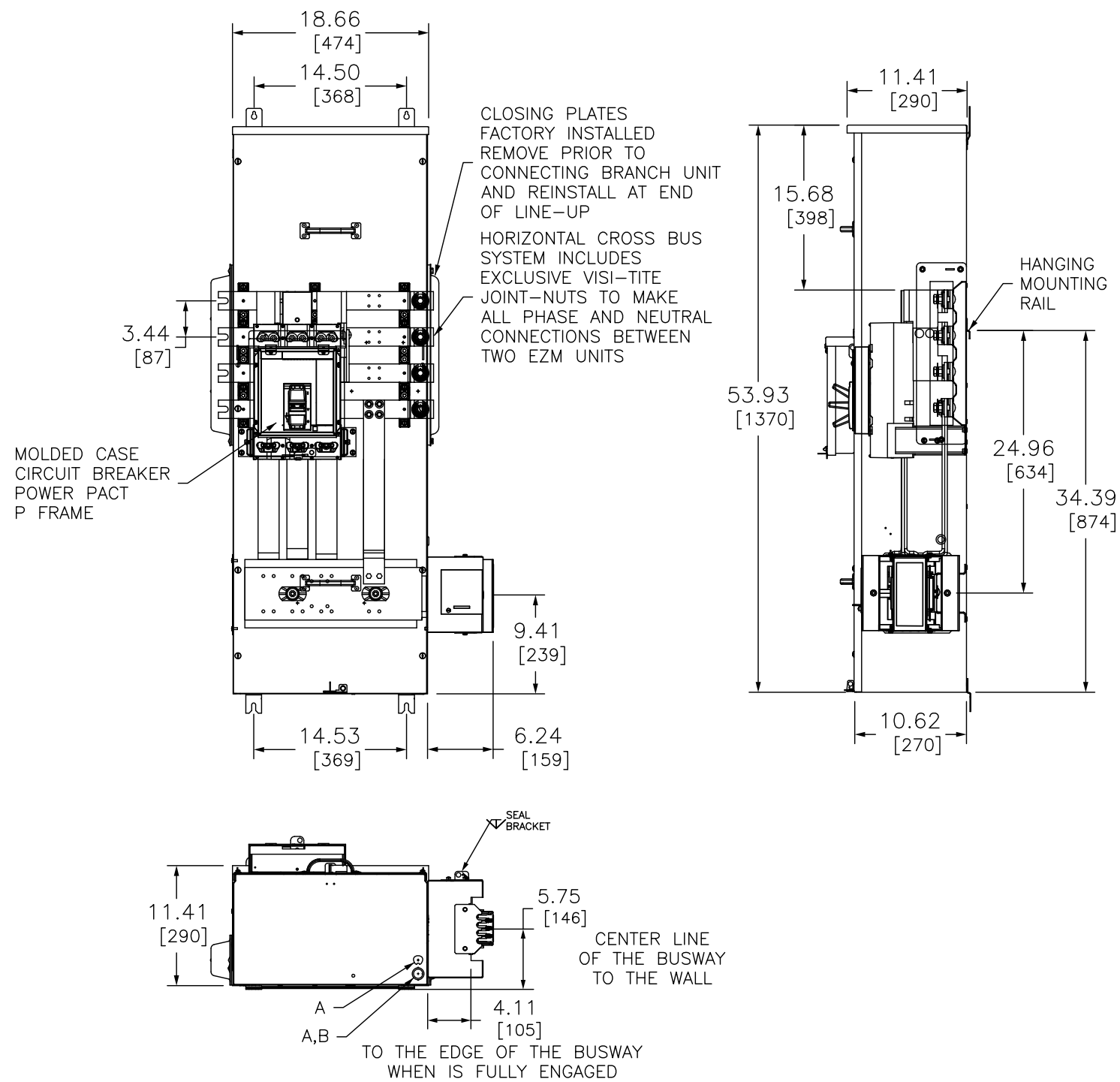


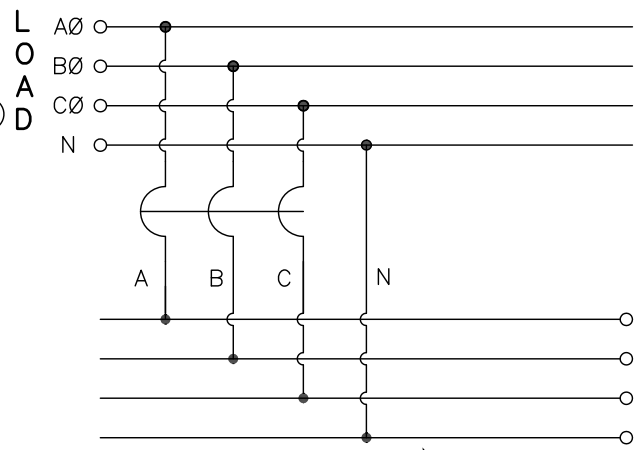
ADDITIONAL NOTES :

- HANDLE EXTENSION AVAILABLE P-FRAME BREAKER
ORDER KIT REF. 33195

SYMBOL	KNOCKOUTS	
	CONDUIT SIZE	
	IN	MM
A	.50	13
B	.75	19



TIGHTEN
50 LB-FT
(600 Lb-in)



TIGHTEN
70 LB-FT
(840 Lb-in)

DUAL DIMENSIONS: INCHES
MILLIMETERS

SYSTEM TYPE	MAIN RATING (AMPERES)	CATALOG NUMBER	MOLDED CASE BREAKER (FACTORY INSTALLED) INTERRUPTING RATING 65kA @ 240V
3Ø 4W 208Y/120VAC OR 240/120VAC DELTA	1000	EZM31000CBNFBTR	PGF36100U31A

NFBTR SUFIX MEANS [NEUTRAL FRONT BUS TAP RIGHT]

NOTES:
FINISH - GRAY BAKED ENAMEL POWDER COAT PAINT OVER CLEANED GALVANNEALED STEEL.
UL LISTED - FILE E131840, VOL. M
MAIN HORIZONTAL CROSS BUS RATED AT 1000 AMPERES. ALUMINUM 1/4 x 2-1/2 TWO LAMINATIONS
MAIN DEVICES ARE SEALABLE BY UTILITY.
GANGABLE MULTI-METERING EQUIPMENT IS DESIGNED FOR WALL MOUNTING ONLY.
(NOT SUITABLE FOR FLOOR STANDING EQUIPMENT.)
1000AMP MAIN CIRCUIT BREAKER SUITABLE FOR USE ONLY WITH BRANCH DEVICES
GROUND CONTINUITY IS MAINTAINED THROUGH THE ENCLOSURE WITH BUSWAY BONDING BRACKETS.

EZ METER-PAK GANGABLE
MULTI-METERING EQUIPMENT
1000A 3PH 4W MAIN CIRCUIT BREAKER
BUSWAY FEED NEUTRAL FRONT BUS TAP RIGHT
INDOOR TYPE 1 ENCLOSURE

SQUARE D
by Schneider Electric

DWG# PWFDS-SYRS-0196