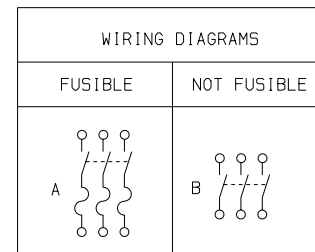
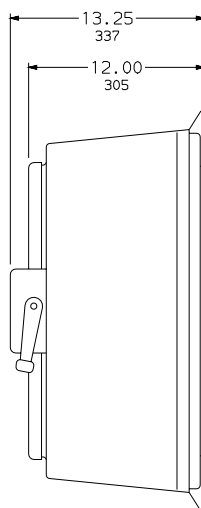
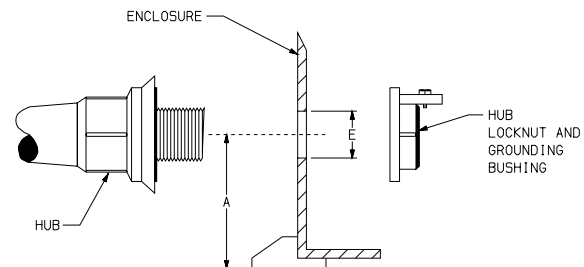


NO KNOCKOUTS



TERMINAL LUGS ‡			
AMPERES	MAX. WIRE	MIN. WIRE	TYPE
100	#1 AWG	#14 AWG	AL OR CU



HUB DETAIL

DUAL DIMENSIONS: INCHES
MILLIMETERS

CATALOG NUMBER	VOLTAGE RATINGS	AMP. RATING	WIRING DIAG.	HORSEPOWER RATINGS												HUBS PROVIDED FOR FIELD INSTALLATION				ENCLOSURE HOLE SIZE DIMENSION E		MINIMUM HUB CENTERLINE DIMENSION		
				120 VAC		240VAC		480VAC		600VAC		125 VDC	250 VDC	600VDC		HUB NO.	NUMBER INCLUDED	HUB SIZE						
				MAX.	STD.	MAX.		STD.	MAX.		STD.	MAX.	MAX.	MAX.	600VDC			IN	MM					
				1Ø	3Ø	1Ø	3Ø	3Ø	1Ø	3Ø	3Ø	3Ø	MAX.	MAX.	STD.	MAX.								
H363DF▲ HU363DF●	600VAC; 600VDC 600VAC; 600VDC	100 100	A B	— 7.5	15 —	— 20	30 30	25 —	— 40	60 75	30 —	75 75	7.5 —	— 20	— 40	— 50	STG6 STG6	2 2	2.00 2.00	51 51	2.50 2.50	64 64	3.25 3.25	83 83

NOTES: UL LISTED - FILE E2875

SUITABLE FOR USE AS SERVICE EQUIPMENT.

◆ FOR DC RATING, USE LEFT AND RIGHT SWITCHING POLES.

■ FOR SINGLE PHASE USE LEFT AND RIGHT SWITCHING POLES.

SHORT CIRCUIT CURRENT RATINGS:

▲ 10,000 AMPERES WITH CLASS H OR K FUSES. 200,000 AMPERES WITH CLASS J OR R FUSES.

● 10,000 AMPERES WHEN PROTECTED BY CLASS H OR K FUSES RATED 100 AMPERES MAXIMUM.

● 200,000 AMPERES WHEN PROTECTED BY CLASS J OR R FUSES RATED 100 AMPERES MAXIMUM.

‡ LUGS SUITABLE FOR 60°C AND 75°C ALUMINUM OR COPPER CONDUCTORS.

HEAVY DUTY SAFETY SWITCHES
VISIBLE BLADE TYPE
30-200 AMPERE
ENCLOSURE - NEMA TYPE 4X
FIBERGLASS REINFORCED POLYESTER

SQUARE D COMPANY

DWG. NO. 1908