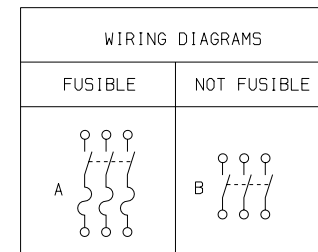
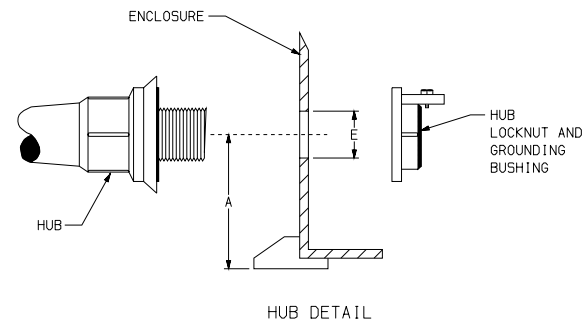


NO KNOCKOUTS



TERMINAL LUGS ‡			
AMPERES	MAX. WIRE	MIN. WIRE	TYPE
200	250 KCMIL	# 6 AWG	AL OR CU



DUAL DIMENSIONS, INCHES  
MILLIMETERS

CATALOG NUMBER	VOLTAGE RATINGS	AMP. RATING	WIRING DIAG.	HORSEPOWER RATINGS								HUBS PROVIDED FOR FIELD INSTALLATION				ENCLOSURE HOLE SIZE DIMENSION E		MINIMUM HUB CENTERLINE DIMENSION	
				240VAC		480VAC		600VAC		250 VDC	600 VDC	HUB NO.	NUMBER INCLUDED	HUB SIZE					
				STD.	MAX.	STD.	MAX.	STD.	MAX.	◆	◆			IN	MM				
				3Ø	3Ø	3Ø	3Ø	3Ø	3Ø	MAX.	MAX.	IN	MM						
H364DF▲ HU364DF◆	600VAC, 600VDC 600VAC, 600VDC	200 200	A B	25	60	50	125	60	150	40	50	STG7 STG7	2 2	2.50 2.50	64 64	3.00 3.00	76 76	3.50 3.50	89 89

NOTES: UL LISTED - FILE E2875

NOT SUITABLE FOR USE AS SERVICE EQUIPMENT.

◆ FOR DC RATING, USE LEFT AND RIGHT SWITCHING POLES.

■ FOR SINGLE PHASE USE LEFT AND RIGHT SWITCHING POLES.

SHORT CIRCUIT CURRENT RATINGS:

▲ 10,000 AMPERES WITH CLASS H OR K FUSES, 200,000 AMPERES WITH CLASS J OR R FUSES.

● 10,000 AMPERES WHEN PROTECTED BY CLASS H OR K FUSES RATED 200 AMPERES MAXIMUM.

● 200,000 AMPERES WHEN PROTECTED BY CLASS J OR R FUSES RATED 200 AMPERES MAXIMUM.

‡ LUGS SUITABLE FOR 75°C ALUMINUM OR COPPER CONDUCTORS.

HEAVY DUTY SAFETY SWITCHES  
VISIBLE BLADE TYPE  
30-200 AMPERE  
ENCLOSURE - NEMA TYPE 4X  
FIBERGLASS REINFORCED POLYESTER

**SQUARE D COMPANY**

DWG. NO. 1918