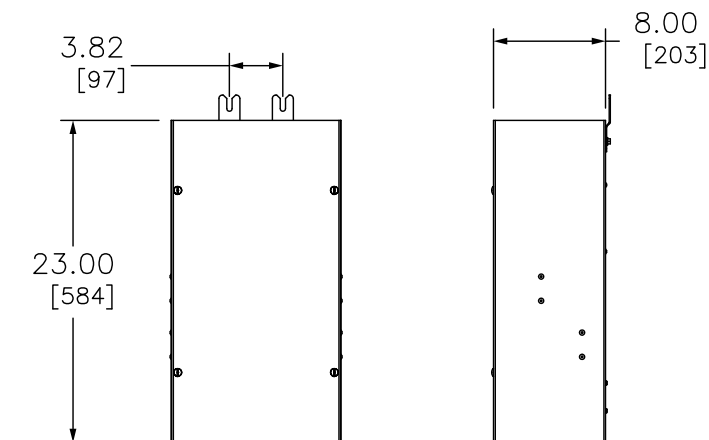
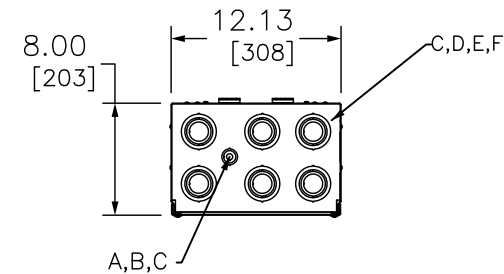
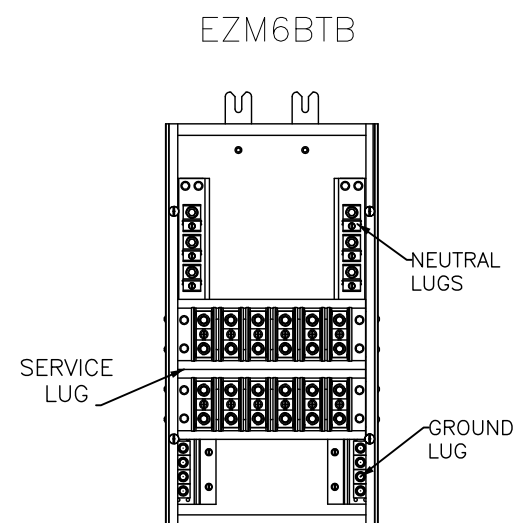
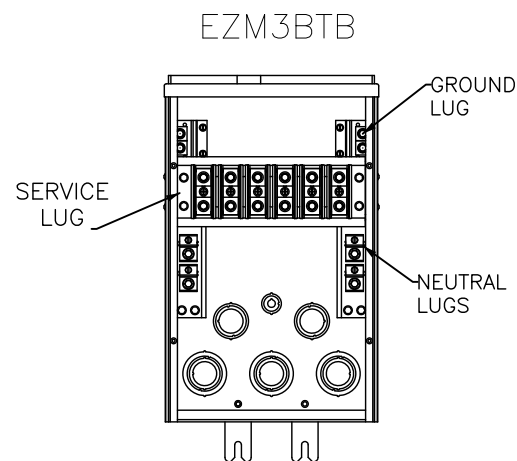
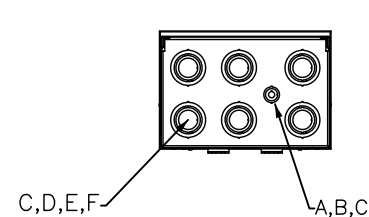


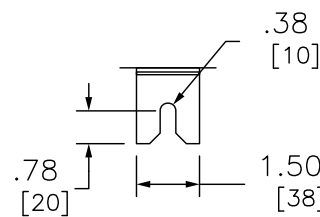
- SUPPLIED WITH DRIP HOOD FOR USE OUTDOORS (NEMA 3R) BOTTOM INSTALLATIONS.
- DRIP HOOD IS REMOVABLE WHEN USED INDOORS (NEMA 1) TOP INSTALLATION.
- KNOCKOUTS PROVIDED IN ONE BTB ENDWALL MATCH KNOCKOUTS ON THE EZM BRANCH DEVICE (TOP & BOTTOM). ADDITIONAL KNOCKOUTS ON OPPOSITE END FOR CABLE EXIT.



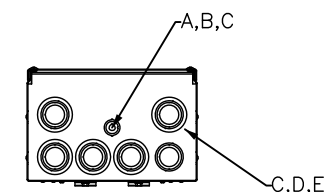
KO	CONDUIT SIZE	Ø KO
A	.50	.88
B	.75	1.13
C	1.00	1.38
D	1.13	1.75
E	1.50	2.00
F	2.00	2.50
G	2.50	3.00
H	3.00	3.63
I	3.50	4.13
J	4.00	4.63



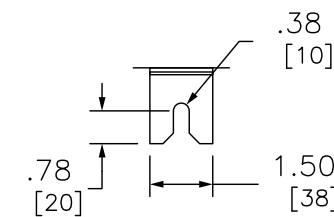
EZM3BTB



BOTTOM MOUNTING BRACKET



EZM6BTB



TOP MOUNTING BRACKET

#### NOTES

- FINISH; GRAY BAKED ENAMEL POWDER COAT PAINT OVER CLEANED GALVANNEALED STEEL.
- UL LISTED FILE E131840 VOL. M SECC.7
- INSTALL ANY PASS THROUGH CONDUCTORS FIRST. THESE ARE CIRCUITS THAT ARE NOT BEING CONNECTED TO LARGER CABLES. IN THIS CASE, THERE WILL BE NO CONNECTION MADE IN THE BTB.
- WHEN ADAPTING 300 KCMIL CONDUCTORS, THE EZM6BTB IS LIMITED TO A MAXIMUM OF FOUR SETS OF CABLES. USE THE HORIZONTAL PHASE LUG ASSEMBLIES TO ADAPT THE NEUTRAL AS WELL AS THE PHASE CONDUCTORS.
- EZM6BTB IS FOR INDOOR USE ONLY(NEMA 1)

EZM BRANCH TERMINAL BOX	CIRCUITS	AMPERE RATING MAX	SERVICE LUG WIRE RANGE	NEUTRAL LUG WIRE RANGE	GROUND LUG WIRE RANGE
EZM3BTB	3	125	(6) 300MCM-4 AWG CU/AL	(4)CU 2/0-14 : 300MCM-4 OR (4)AL 2/0-12 : 300MCM-4	(4) 1-4/0 CU/AL
EZM6BTB	6	125	(12) 300MCM-4 AWG CU/AL	(4)CU 2/0-14 : 300MCM-4 OR (4)AL 2/0-12 : 300MCM-4	(8) 1-4/0 CU/AL

\* THE EZM3BTB AND EZM6BTB ALLOW THE TRANSITION FROM A MAXIMUM OF 2/0 EZM BRANCH CONDUCTORS TO A MAXIMUM OF 300 KCMIL LOAD CONDUCTORS TO REDUCE VOLTAGE DROP

DUAL DIMENSIONS: INCHES  
MILLIMETERS

EZM BRANCH TERMINAL BOX  
MULTI-METERING EQUIPMENT  
FOR USE ON EZM BRANCH UNIT 125 AMP MAXIMUM

**SQUARE D**™  
by Schneider Electric

DWG#  
NO.